

FEB 14 1997

COMMISSION

LAND CORNER RECORDATION CERTIFICATE
Filing Requirement of Act 74, Mich. P.A. 1970
KENT COUNTY REMONUMENTATION

For corners in

Kent (County)	Located in: Caledonia Township	Corner Code #
1. Public Land Survey	T 5N R 10W	L-8
	T R	
	T R	
	T R	
2. Property Controlling in Section	S T R	
	S T R	
3. Miscellaneous Property in Sec.	S T R	
	S T R	

STATE OF MICHIGAN
COUNTY OF KENT
RECEIVED FOR RECORD

96 NOV - 8 AM 9:24

REG. OF DEEDS

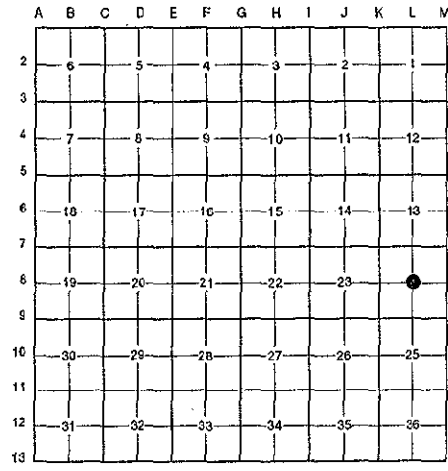
Lucy St. Paul

9568

Register of Deeds Stamp & File Number

- 4. Lot No. _____, Recorded Plat _____
- 5. Private Claims _____

I, Randy Kolehouse, in a field survey on April 12 19 96, do hereby certify that under requirements of P.A. 74 Michigan P.A. of 1970, the corner points mentioned in lines 1 and 2 above were in conformance with regulations and rules therefore as required in the current manual of survey instructions of the United States Department of the interior, Bureau of Land Management or by a decree of a Court of Law and/or that the corner points mentioned in lines 3, 4 and 5 above were in conformance with the rules of the Michigan Board of Land Surveyors or by a Decree of a Court of Law; established, re-established, monumented, re-monumented, recovered, found as expressed below:



NOTE: Not more than 4 corners, all in the same town and range, may be recorded on this certificate.

A. Description of original monument and accessories and/or subsequent restoration:

L-8 This corner was not originally set by the G.L.O.
1980 L.C.R.C. #1362 Merdzinski "T" Iron

P.A. 345 1990 KENT COUNTY,
PEER APPROVED 10/24/96
CHAIRMAN *Randy Huber*

B. Description of corner evidence found and/or method applied in restoring or reestablishing corner:

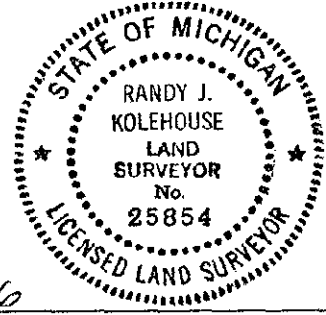
L-8 Found a "T" iron on the C/L of Vincent Avenue (gravel) running North and South and 5' South of a fence line running to the West per L.C.R.C. #1362. Iron is 0.2' West and 0.8' South of the intersection of 1/4 lines. Accepted "T" iron as the Center of Section.

L.C.R.C. #1362
C/L 20" Oak N. 50° E. 28.72'
C/L 16" Oak N. 35° W. 42.58'
C/L 32" Oak S. 30° W. 80.90'
In C/L of gravel rd. N & S
E & W fence 3'-5' N more or less

The selected location is accepted by me and is generally accepted by professional surveyors as the best available evidence of the position of the original corner.

C. Description of monument for corner and accessories established to perpetuate locating the position of the corner:

L-8 Replaced "T" Iron with a Standard Kent County Monument
Nail & K.C. remon. tag on NW side 36" Oak N 60° E 28.81'
Nail & K.C. remon. tag on SW side 30" Oak N 25° W 42.62'
Nail & K.C. remon. tag on E side 52" Oak S 18° W 80.52'
Nail & K.C. remon. tag on N side 10" Hickory S 65° E 32.89'



Signed by *Randy J. Kolehouse*
EARTH TECH

Date 10/25/96

Surveyor's Michigan License No. 25854