

\$7.00
\$2.00

FEB 14 1997

LAND CORNER RECORDATION CERTIFICATE
Filing Requirement of Act 74, Mich. P.A. 1970
KENT COUNTY REMONUMENTATION

STATE OF MICHIGAN
COUNTY OF KENT
RECEIVED FOR RECORD
96 NOV -8 AM 9:24

REG. OF DEEDS
Luis Standa

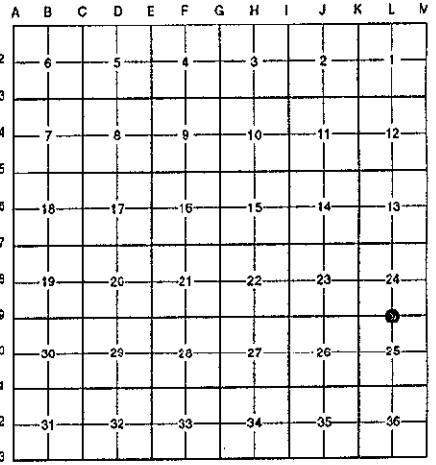
9569

Register of Deeds Stamp & File Number

For corners in Kent (County) Located in: Caledonia Township Corner Code #

1. Public Land Survey	T <u>5N</u>	R <u>10W</u>	<u>L-9</u>
	T _____	R _____	_____
	T _____	R _____	_____
	T _____	R _____	_____
2. Property Controlling in Section	S _____	T _____	R _____
	S _____	T _____	R _____
3. Miscellaneous Property in Sec.	S _____	T _____	R _____
	S _____	T _____	R _____

4. Lot No. _____, Recorded Plat _____
5. Private Claims _____



I, Randy Kolehouse, in a field survey on April 9 19 96, do hereby certify that under requirements of P.A. 74 Michigan P.A. of 1970, the corner points mentioned in lines 1 and 2 above were in conformance with regulations and rules therefore as required in the current manual of survey instructions of the United States Department of the Interior, Bureau of Land Management or by a decree of a Court of Law and/or that the corner points mentioned in lines 3, 4 and 5 above were in conformance with the rules of the Michigan Board of Land Surveyors or by a Decree of a Court of Law; established, re-established, monumented, re-monumented, recovered, found as expressed below:

NOTE: Not more than 4 corners, all in the same town and range, may be recorded on this certificate.

A. Description of original monument and accessories and/or subsequent restoration:

L-9	1831	G.L.O. Notes	Mullett	Set Post
	1908	Notes	Williams & Works	Pointed Stone
	1982	L.C.R.C. #2931	Exxel Engineering	"T" Iron
	1982	L.C.R.C. #3135	Exxel Engineering	Fnd. "T" Iron and Stone / Set K.C. Monument
	1995	L.C.R.C. #8151	K. Breitels	K.C. Monument

P.A. 345 1990 KENT COUNTY
PEER APPROVED 7/29/96
CHAIRMAN Randy Kolehouse

This corner was originally approved by the Kent County Remonumentation Peer Group and monumented by Exxel Engineering on 10/11/82 and was recorded per L.C.R.C. #3135.

B. Description of corner evidence found and/or method applied in restoring or reestablishing corner:
L-9 Found a Standard Kent County Monument on the C/L intersection of 92nd Street (bit.) running East and West and Vincent Avenue (gravel) running North and South per L.C.R.C.'s #3135 and #8151 as set by Exxel Engineering in place of "T" iron and stone they found which checked L.C.R.C. #2931 and the 1908 notes of Williams & Works.

L.C.R.C. #3135	L.C.R.C. #8151
Nail & KC tag in N'yly sde 24" Oak (1 1/2' above ground) S 77° W 116.12'	Nail & KC Remon. tag N. side 28" Oak S 77° W 116.12'
"X" in C/L of concrete headwall over N-S culvert S 80° E 78.23'	Nail & KC Remon. tag NE side P. Pole N 55° W 82.99'
	Nail & KC Remon. tag NW side P. Pole N 50° E 72.32'
	"X" in C/L of conc. headwall over N-S culv. S 80° E 78.23'
	Monument is at C/L "X" of raods N-S-E-W

The selected location is accepted by me and is generally accepted by professional surveyors as the best available evidence of the position of the original corner.

C. Description of monument for corner and accessories established to perpetuate locating the position of the corner:
L-9 Standard Kent County Monument
Nail & K.C. remon. tag on N side 28" Oak S 77° W 116.12'
Nail & K.C. remon. tag on NE side P. pole N 55° W 82.99'
Nail & K.C. remon. tag on NW side P. pole N 50° E 72.32'
"X" in C/L conc. headwall over N-S culvert S 80° E 78.23'

Signed by Randy J. Kolehouse Date 10/8/96
EARTH TECH
Surveyor's Michigan License No. 25854

