

SURVEY & REMONUMENTATION

\$7.00
\$2.00

FEB 14 1997

COMMISSION LAND CORNER RECORDATION CERTIFICATE
Filing Requirement of Act 74, Mich. P.A. 1970
KENT COUNTY REMONUMENTATION

For corners in

Kent (County)	Located in: Caledonia Township	Corner Code #
1. Public Land Survey	T <u>5N</u> R <u>10W</u>	<u>L-11</u>
	T _____ R _____	_____
	T _____ R _____	_____
	T _____ R _____	_____
2. Property Controlling in Section	S _____ T _____ R _____	_____
	S _____ T _____ R _____	_____
3. Miscellaneous Property in Sec.	S _____ T _____ R _____	_____
	S _____ T _____ R _____	_____

STATE OF MICHIGAN
COUNTY OF KENT
RECEIVED FOR RECORD

96 NOV -8 AM 9:24

REG. OF DEEDS
Lucy Bond

9570

Register of Deeds Stamp & File Number

4. Lot No. _____, Recorded Plat _____
5. Private Claims _____

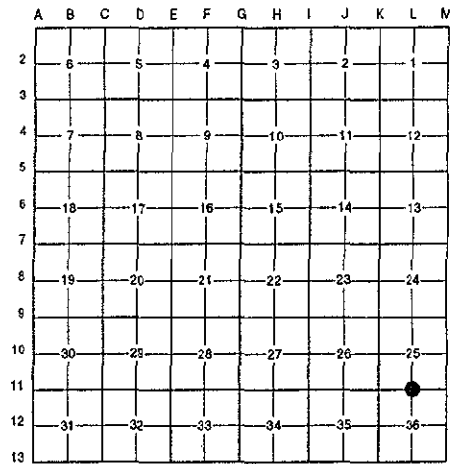
I, Randy Kolehouse, in a field survey on April 9 19 96, do hereby certify that under requirements of P.A. 74 Michigan P.A. of 1970, the corner points mentioned in lines 1 and 2 above were in conformance with regulations and rules therefore as required in the current manual of survey instructions of the United States Department of the interior, Bureau of Land Management or by a decree of a Court of Law and/or that the corner points mentioned in lines 3, 4 and 5 above were in conformance with the rules of the Michigan Board of Land Surveyors or by a Decree of a Court of Law; established, re-established, monumented, re-monumented, recovered, found as expressed below:

NOTE: Not more than 4 corners, all in the same town and range, may be recorded on this certificate.

A. Description of original monument and accessories and/or subsequent restoration:

L-11	1831	G.L.O. Notes	Mullett	Set Post
	1966	Witness Map	K.C. Surveyor	Iron
	1974	L.C.R.C. #640	Exxel Engineering	3/4" Iron
	1977	L.C.R.C. #1234	William Byl	Boat Spike in Mon. Box
	1982	L.C.R.C. #2690	Jonker Land Survey	Fnd. 3/4" Iron in Mon. Box / Set K.C. Monument in Mon. Box
	1995	L.C.R.C. #8152	K. Breitels	K.C. Monument

P.A. 345 1970 KENT COUNTY
PEER APPROVED 7/25/96
CHAIRMAN *Randy Kolehouse*



This corner was originally approved by the Kent County Remonumentation Peer Group and monumented by Rob Jonker on 3/17/82 and was recorded per L.C.R.C. #2690.

B. Description of corner evidence found and/or method applied in restoring or reestablishing corner:

L-11 Found a Standard Kent County Monument in a monument box 1' North of the C/L of 100th Street (bit.) running East and West and 3' West of the C/L of Vincent Avenue (gravel) running to the North per L.C.R.C.'s #2690 and #8152 as set Rob Jonker in place of a 3/4" iron he found in a monument box which checked L.C.R.C.'s #1234 and #640 and the K.C. Surveyor's records.

L.C.R.C. #2690

L.C.R.C. #8152

Remon. tag on S side p. pole N 70° E 100.95'
Remon. tag on NE side 20" Hickory S 65° E 98.82'
Remon. tag on NE side 20" Ash S 60° E 76.06'
Remon. tag on E side 8" Hickory S 10° W 38.73'
Remon. tag on E side 16" Oak N 15° W 95.29'
Chisled "X" on E. end culvert N 20° E 92.38'
On C/L E-W pavement, in line with C/L gravel to N

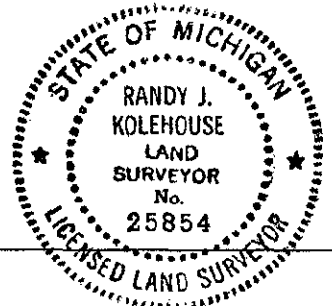
Nail & KC Remon. tag S. side P. Pole N 70° E 100.83'
Nail & KC Remon. tag NE side 30" Ash S60° E 76.10'
Nail & KC Remon. tag E. side 12" Hickory S 10° W 38.77'
Nail & KC Remon. tag E. side 24" Oak N 15° W 95.30'
Chiseled "X" on E. end culvert N 20° E 92.44'
On C/L E-W pavement, in line with C/L gravel to N

The selected location is accepted by me and is generally accepted by professional surveyors as the best available evidence of the position of the original corner.

C. Description of monument for corner and accessories established to perpetuate locating the position of the corner:

L-11 Standard Kent County Monument in a Monument Box

Nail & K.C. remon. tag on S side P. pole N 70° E 100.83'
Nail & K.C. remon. tag on NE side 30" Ash S 60° E 76.10'
Nail & K.C. remon. tag on E side 12" Hickory S 10° W 38.77'
Nail & K.C. remon. tag on E side 24" Oak N 15° W 95.30'
"X" cut on E end conc. culvert N 20° E 92.44'



Signed by *Randy J. Kolehouse*

Date 10/18/96

Surveyor's Michigan License No. 25854