

FEB 14 1997

LAND CORNER RECORDATION CERTIFICATE
Filing Requirement of Act 74, Mich. P.A. 1970

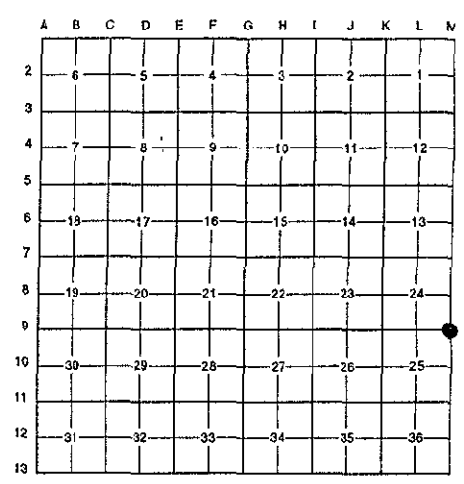
For corners in **COMMISSION**

KENT COUNTY REMONUMENTATION

<u>Kent</u> (County)	Located in: Caledonia Township	Corner Code #
1. Public Land Survey	T <u>5N</u> R <u>10W</u>	<u>M-9</u>
	T _____ R _____	_____
	T _____ R _____	_____
	T _____ R _____	_____
2. Property Controlling in Section	S _____ T _____ R _____	_____
	S _____ T _____ R _____	_____
3. Miscellaneous Property in Sec.	S _____ T _____ R _____	_____
	S _____ T _____ R _____	_____
4. Lot No. _____, Recorded Plat _____		
5. Private Claims _____		

STATE OF MICHIGAN
 COUNTY OF KENT
 RECEIVED FOR RECORD
 96 NOV -8 AM 9:25
 REG. OF DEEDS
Luis J. Kulehouse
 9582
 Register of Deeds Stamp & File Number

I, Randy Kolehouse, in a field survey on April 9 19 96, do hereby certify that under requirements of P.A. 74 Michigan P.A. of 1970, the corner points mentioned in lines 1 and 2 above were in conformance with regulations and rules therefore as required in the current manual of survey instructions of the United States Department of the interior, Bureau of Land Management or by a decree of a Court of Law and/or that the corner points mentioned in lines 3, 4 and 5 above were in conformance with the rules of the Michigan Board of Land Surveyors or by a Decree of a Court of Law; established, re-established, monumented, re-monumented, recovered, found as expressed below:



NOTE: Not more than 4 corners, all in the same town and range, may be recorded on this certificate.

A. Description of original monument and accessories and/or subsequent restoration:

M-9	1817	G.L.O. Notes	L. Lyon	Set Post
	1961	Witness Map	K.C. Surveyor	Fence Post
	1979	L.C.R.C. #1316	Exxel Engineering	"T" Iron
	1983	L.C.R.C. #3457	Williams & Works	Fnd. "T" Iron / Set K.C. Monument
	1995	L.C.R.C. #8162	K. Breitels	K.C. Monument

P.A. 345 1990 KENT COUNTY
 PEER APPROVED 8/22/96
 CHAIRMAN *Harry Huber*

Note: This corner is common with A-9, T5N, R9W.

This corner was originally approved by the Kent County Remonumentation Peer Group and monumented by Williams & Works on 7/7/83 and was recorded per L.C.R.C. #3457.

B. Description of corner evidence found and/or method applied in restoring or reestablishing corner:

M-9 Found a Standard Kent County Monument 1.5' South of the C/L of 92nd Street (bit.) running East and West per L.C.R.C.'s #3457 and #8162 as set by Williams & Works in place of a "T" iron they found which checked L.C.R.C. #1316 (A-9, T5N, R9W) and the K.C. Surveyor's records.

L.C.R.C. #3457

L.C.R.C. #8162

Nail & KC. Remon. tag in SE side 20" cedar S. 60° W. 98.56'
 Nail & KC. Remon. tag in SE side 12" maple N. 65° E. 63.58'
 Nail & KC. Remon. tag in W. side Power Pole North 59.75'
 Center line corner steel fence post S. 70° E. 88.65'
 Center line blacktopped road running E & W is 1.5' North

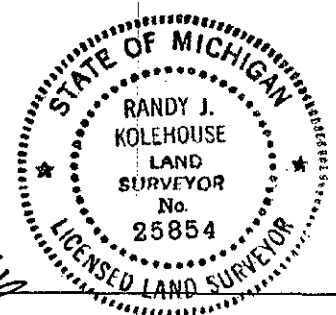
Nail & KC Remon. tag SE side 24" Cedar S 60° W 98.51'
 Nail & KC Remon. tag SE side 15" Maple N 65° E 63.42'
 Nail & KC Remon. tag W. side Power Pole N 00° E 59.82'
 Centerline corner steel fence post S 70° E 88.68'
 Centerline blacktopped road running E-W is 1.5' North

The selected location is accepted by me and is generally accepted by professional surveyors as the best available evidence of the position of the original corner.

C. Description of monument for corner and accessories established to perpetuate locating the position of the corner:

M-9 Standard Kent County Monument

Nail & K.C. remon. tag on SE side 24" Cedar S 60° W 98.51'
 Nail & K.C. remon. tag on SE side 15" Maple N 65° E 63.42'
 Nail & K.C. remon. tag on W side P. pole N 00° E 59.82'
 C/L corner steel fence post S 70° E 88.68'



Signed by *Randy J. Kolehouse* Date 10/8/96
 EARTH TECH
 Surveyor's Michigan License No. 25854