

SURVEY & REMONUMENTATION

FEB 14 1997

\$7.00
\$2.00

COMMISSION

LAND CORNER RECORDATION CERTIFICATE
Filing Requirement of Act 74, Mich. P.A. 1970
KENT COUNTY REMONUMENTATION

"Other"
Code # 2

For corners in

Kent (County)	Located in: Caledonia Township	Corner Code #
1. Public Land Survey	T _____ R _____	_____
	T _____ R _____	_____
	T _____ R _____	_____
	T _____ R _____	_____
2. Property Controlling in Section	S _____ T <u>5N</u> R <u>10W</u>	<u>North Witness</u>
	S _____ T _____ R _____	<u>Monument</u>
3. Miscellaneous Property in Sec.	S _____ T _____ R _____	<u>1,052.3' North of G-4</u>
	S _____ T _____ R _____	_____

STATE OF MICHIGAN
COUNTY OF KENT
RECEIVED FOR RECORD

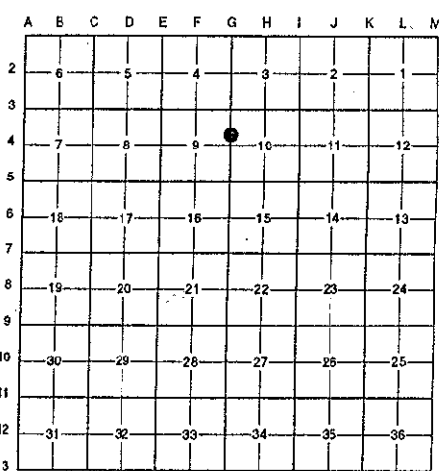
96 NOV -8 AM 9:22

REG. OF DEEDS
David Spald
9501

Register of Deeds Stamp & File Number

4. Lot No. _____, Recorded Plat _____
5. Private Claims _____

I, Randy Kolehouse, in a field survey on June 5 19 96, do hereby certify that under requirements of P.A. 74 Michigan P.A. of 1970, the corner points mentioned in lines 1 and 2 above were in conformance with regulations and rules therefore as required in the current manual of survey instructions of the United States Department of the interior, Bureau of Land Management or by a decree of a Court of Law and/or that the corner points mentioned in lines 3, 4 and 5 above were in conformance with the rules of the Michigan Board of Land Surveyors or by a Decree of a Court of Law; established, re-established, monumented, re-monumented, recovered, found as expressed below:



NOTE: Not more than 4 corners, all in the same town and range, may be recorded on this certificate.

A. Description of original monument and accessories and/or subsequent restoration:

G-4B 1831	G.L.O. Notes	Mullett	Corner Falls in "Lake" (River) - Set Temporary Point
1977	Notes	Williams & Works	"T" Iron
1992	L.C.R.C. #6565	T. Chettleburgh	Fnd. "T" Iron / Set K.C. Monument w/Witness Cap

This corner was originally approved by the Kent County Remonumentation Peer Group and monumented by T. Chettleburgh on 5/27/92 and was recorded per L.C.R.C. #6565.

B. Description of corner evidence found and/or method applied in restoring or reestablishing corner:

G-4B Found a Standard Kent County Monument 2' West of the C/L of Thornapple River Drive, 1,052.3' North of G-4, T5N, R10W, per L.C.R.C. #6565 as set by T. Chettleburgh in place of a "T" iron he found (chisel point below) on the West line of Section 10/East line of Section 9 and on the C/L of Thorapply River Drive at 1583.47' South of NE corner of Section 9 per the 1977 notes of Williams and Works.

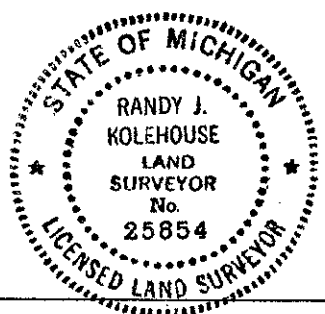
L.C.R.C. #6565

- Remon tag in NW side Tri 8" Boxelder N 82° E 51.31'
- Remon tag in NE side Power Pole S 62° E 41.07'
- Remon tag in E side Twin 9" Elm S 12° E 22.99'
- Remon tag in W side Boxelder S 19° W 39.89'
- Iron Bar S 48° W 22.93'

The selected location is accepted by me and is generally accepted by professional surveyors as the best available evidence of the position of the original corner.

C. Description of monument for corner and accessories established to perpetuate locating the position of the corner:

- G-4B Standard Kent County Monument
- Nail & K.C. remon. tag on NW side Tri 8" Boxelder N 82° E 51.31'
 - Nail & K.C. remon. tag on NE side Power Pole S 62° E 41.07'
 - Nail & K.C. remon. tag on E side Twin 9" Elm S 12° E 22.99'
 - Nail & K.C. remon. tag on W side Box Elder S 19° W 39.89'
 - Iron Bar S 48° W 22.93'
 - K.C. Mon. @ G-3, T5N, R10W, North 1583.4'



Signed by Randy J. Kolehouse Date 10/8/96
EARTH TECH

Surveyor's Michigan License No. 25854

P.A. 345 1990 KENT COUNTY
PEER APPROVED 2/22/96
CHAIRMAN Randy Kolehouse