

SURVEY & REMONUMENTATION

LAND CORNER RECORDATION CERTIFICATE
Filing Requirement of Act 74, Mich. P.A. 1970
KENT COUNTY REMONUMENTATION

FEB 14 1997

For corners in

Kent (County)	COMMISSION	Located in:	Caledonia Township	Corner Code #
1. Public Land Survey	T	R		
	T	R		
	T	R		Reference Monument
	T	R		121.72'
2. Property Controlling in Section	S	T 5N	R 10E	West of G-6
	S	T	R	
3. Miscellaneous Property in Sec.	S	T	R	
	S	T	R	

REG. OF DEEDS

Handwritten signature

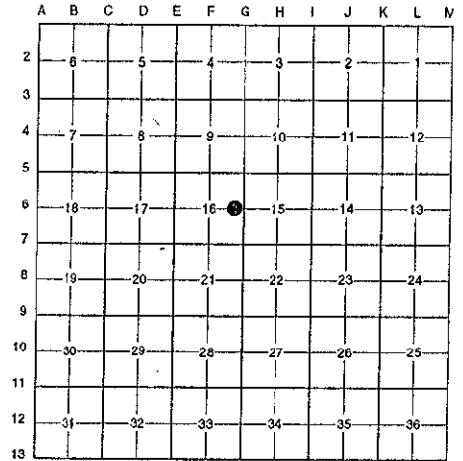
96 DEC 20 PM 12:42

STATE OF MICHIGAN
 COUNTY OF KENT
 RECEIVED FOR RECORD

9610

Register of Deeds Stamp & File Number

- 4. Lot No. _____, Recorded Plat _____
- 5. Private Claims _____



I, Randy Kolehouse, in a field survey on October 28 19 96, do hereby certify that under requirements of P.A. 74 Michigan P.A. of 1970, the corner points mentioned in lines 1 and 2 above were in conformance with regulations and rules therefore as required in the current manual of survey instructions of the United States Department of the Interior, Bureau of Land Management or by a decree of a Court of Law and/or that the corner points mentioned in lines 3, 4 and 5 above were in conformance with the rules of the Michigan Board of Land Surveyors or by a Decree of a Court of Law; established, re-established, monumented, re-monumented, recovered, found as expressed below:

NOTE: Not more than 4 corners, all in the same town and range, may be recorded on this certificate.

A. Description of original monument and accessories and/or subsequent restoration:

G-6	1831	G.L.O. Notes	Mullett	Set Post in River
	1961	Witness Map	K.C. Surveyor	Ref. Iron 200' East
	1987	Survey Records	Exxel Engineering	Calc. Location - Set Ref. Iron 121.72' West

The location of this corner was originally approved by the Kent County Remonumentation Peer Group in 1986.

B. Description of corner evidence found and/or method applied in restoring or reestablishing corner:

G-6 G-6 Falls in the Thornapple River. Calculated its location from survey information from Exxel Engineering which is based on field survey by Exxel Engineering and Consumers Power Company. Using this information, set reference monument on the East and West 1/4 line 121.72' West of G-6.

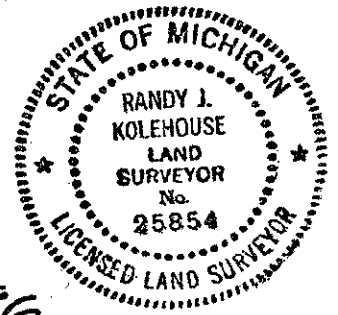
Calculated distance G-6 North to G-5 = 2639.36' (G.L.O. = 2640.0') (Exxel = 2639.58')
 Calculated distance G-6 South to G-7 = 2630.44' (G.L.O. = 2640.0') (Exxel = 2630.40')

P.A. 345 1990 KENT COUNTY
 PEER APPROVED 10/29/96
 CHAIRMAN Harry Huber

The selected location is accepted by me and is generally accepted by professional surveyors as the best available evidence of the position of the original corner.

C. Description of monument for corner and accessories established to perpetuate locating the position of the corner:

- G-6 Standard Kent County Monument
- Nail & K.C. remon. tag on NE side Util. pole N 50° W 76.23'
- Nail & K.C. remon. tag on top wooden guardrail post N 30° E 24.94'
- Nail & K.C. remon. tag on top wooden guardrail post S 57° E 26.31'
- Nail & K.C. remon. tag on top leaning wooden guardrail post S 28° W 27.54'
- Nail & K.C. remon. tag on top wooden guardrail post N 62° W 24.66'
- In C/L N-S bit. road (Thornapple River Drive)



Signed by Randy J. Kolehouse Date 12/4/96
 Surveyor's Michigan License No. 25854