

SURVEY & REMONUMENTATION

FEB 14 1997

COMMISSION

LAND CORNER RECORDATION CERTIFICATE
 Filing Requirement of Act 74, Mich. P.A. 1970
 KENT COUNTY REMONUMENTATION

For corners in

Kent
 (County)

Located in: Caledonia
 Township

Corner Code #

- | | | | | | | | | |
|------------------------------------|---|-------|---|-----------|--------------------|------------|-------|--------------|
| 1. Public Land Survey | T | _____ | R | _____ | _____ | | | |
| | T | _____ | R | _____ | _____ | | | |
| | T | _____ | R | _____ | Reference Monument | | | |
| | T | _____ | R | _____ | 279.08' | | | |
| 2. Property Controlling in Section | S | _____ | T | <u>5N</u> | R | <u>10W</u> | _____ | South of G-6 |
| | S | _____ | T | _____ | R | _____ | _____ | _____ |
| 3. Miscellaneous Property in Sec. | S | _____ | T | _____ | R | _____ | _____ | _____ |
| | S | _____ | T | _____ | R | _____ | _____ | _____ |

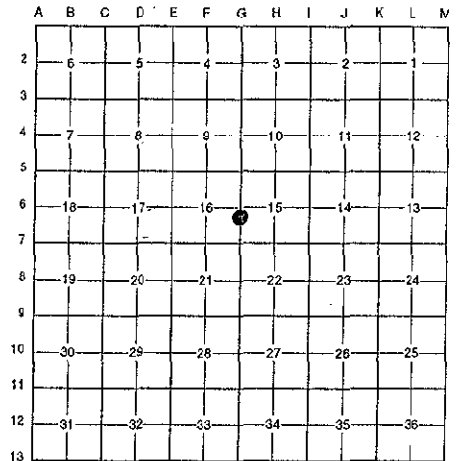
4. Lot No. _____, Recorded Plat _____
 5. Private Claims _____

other code # 15

STATE OF MICHIGAN
 COUNTY OF KENT
 RECEIVED FOR RECORD
 96 DEC 20 PM 12:42
 REG. OF DEEDS
[Signature]
9611
 Register of Deeds Stamp & File Number

I, Randy Kolehouse, in a field survey on October 28 19 96, do hereby certify that under requirements of P.A. 74 Michigan P.A. of 1970, the corner points mentioned in lines 1 and 2 above were in conformance with regulations and rules therefore as required in the current manual of survey instructions of the United States Department of the interior, Bureau of Land Management or by a decree of a Court of Law and/or that the corner points mentioned in lines 3, 4 and 5 above were in conformance with the rules of the Michigan Board of Land Surveyors or by a Decree of a Court of Law; established, re-established, monumented, re-monumented, recovered, found as expressed below:

NOTE: Not more than 4 corners, all in the same town and range, may be recorded on this certificate.



A. Description of original monument and accessories and/or subsequent restoration:

G-6	1831	G.L.O. Notes	Mullett	Set Post in River
	1961	Witness Map	K.C. Surveyor	Ref. Iron 200' East
	1987	Survey Records	Exxel Engineering	Calc. Location - Set Ref. Iron 121.72' West

The location of this corner was originally approved by the Kent County Remonumentation Peer Group in 1986.

B. Description of corner evidence found and/or method applied in restoring or reestablishing corner:

G-6 G-6 Falls in the Thornapple River. Calculated its location from survey information from Exxel Engineering which is based on field survey by Exxel Engineering and Consumers Power Company. Using this information, set reference monument on the East line of Section 16, 279.08' South of G-6.

P.A. 345 1990 KENT COUNTY
 PEER APPROVED 10/24/96
 CHAIRMAN [Signature]

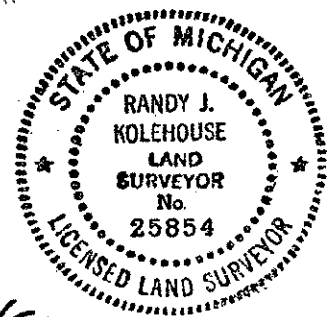
Calculated distance G-6 North to G-5 = 2639.36' (G.L.O. = 2640.0') (Exxel = 2639.58')
 Calculated distance G-6 South to G-7 = 2630.44' (G.L.O. = 2640.0') (Exxel = 2630.40')

The selected location is accepted by me and is generally accepted by professional surveyors as the best available evidence of the position of the original corner.

C. Description of monument for corner and accessories established to perpetuate locating the position of the corner:

G-6 Standard Kent County Monument

- Nail & K.C. remon. tag on E side Util. pole N 15° W 113.47'
- Nail & K.C. remon. tag on W side 32" Bl. Oak N 00° E 110.08'
- Nail & K.C. remon. tag on NW side 12" Bl. Oak N 38° E 22.73'
- Nail & K.C. remon. tag on E side 18" Beech S 32° E 20.59'
- In C/L bit. road approximately N-S (Thornapple River Drive) 45' West
- Rebar w/red cap "GPS MI 39086" W side road S 25° W 113.62'



Signed by [Signature] Date 12/4/96
 EARTH TECH

Surveyor's Michigan License No. 25854