

SURVEY & REMONUMENTATION

FEB 14 1997

COMMISSION LAND CORNER RECORDATION CERTIFICATE
Filing Requirement of Act 74, Mich. P.A. 1970
KENT COUNTY REMONUMENTATION

For corners in

Kent (County)	Located in:	Gaines Township	Corner Code #
1. Public Land Survey	T <u>5N</u>	R <u>11W</u>	<u>C-2</u>
	T _____	R _____	_____
	T _____	R _____	_____
	T _____	R _____	_____
2. Property Controlling in Section	S _____	T _____	R _____
	S _____	T _____	R _____
3. Miscellaneous Property in Sec.	S _____	T _____	R _____
	S _____	T _____	R _____

REG. OF DEEDS

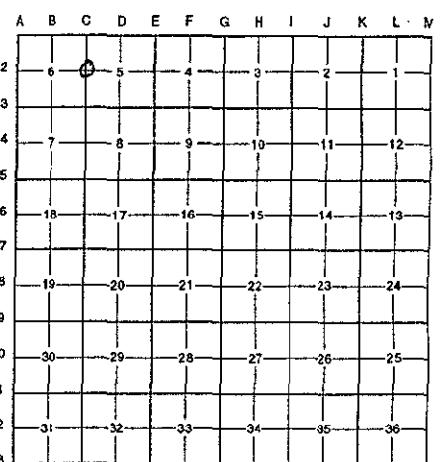
Lucy Bond

9222

Register of Deeds Stamp & File Number

96 AUG -9 AM 8:38
 RECEIVED FOR RECORD
 COUNTY OF KENT
 STATE OF MICHIGAN

4. Lot No. _____, Recorded Plat _____
 5. Private Claims _____



Randy Kolehouse, in a field survey on January 22 19 96, do hereby certify that under requirements of P.A. 74 Michigan P.A. of 1970, the corner points mentioned in lines 1 and 2 above were in conformance with regulations and rules therefore as required in the current manual of survey instructions of the United States Department of the Interior, Bureau of Land Management or by a decree of a Court of Law and/or that the corner points mentioned in lines 3, 4 and 5 above were in conformance with the rules of the Michigan Board of Land Surveyors or by a Decree of a Court of Law; established, re-established, monumented, re-monumented, recovered, found as expressed below:

NOTE: Not more than 4 corners, all in the same town and range, may be recorded on this certificate.

A. Description of original monument and accessories and/or subsequent restoration:

C-2	1831	G.L.O. Notes	Mullett	Set Post
	1918-1971	Survey Records	Williams & Works	Stone/Iron/Mon. Box
	1955	Wit. Map	K.C. Surveyor	Iron
	1983	L.C.R.C. #3577	William Byl	Fnd. Iron in Mon. Box / Set K.C. Monument
	1989	L.C.R.C. #5015	J. Bueche	K.C. Monument

P.A. 345 1990 KENT COUNTY
 PEER APPROVED 3/7/86
 CHAIRMAN J. Bueche

This corner was originally approved by the Kent County Remonumentation Peer Group and monumented by William Byl on 7/29/83 and was recorded per L.C.R.C. #3577.

B. Description of corner evidence found and/or method applied in restoring or reestablishing corner:

C-2 Found a PK nail in the C/L of Eastern Avenue (bit.) running N-S on line of fences running E-W per L.C.R.C.'s #3577 and #5015. No evidence of monument set by William Byl in place of an iron in monument box he found which checks Williams & Works and K.C. Surveyor's records 1918-1955. Accepted PK nail as corner.

L.C.R.C. #3577

L.C.R.C. #5015

SW cor. conc. block garage N 65° E 184.70'
 NE cor. brick veneer, Hse # 6383 N 45° W 147.06'
 C/L USGS benchmark N 90° E 39.49'
 Nail & tag, S sd. power pole S 90° W 39.60'

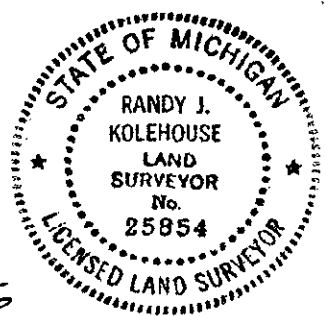
SW cor. conc. block garage N 65° E 184.70' (m. 184.60')
 NE cor. brick veneer, Hse # 6375 N 45° W 147.06' (m. 146.95')
 C/L USGS benchmark N 90° E 39.49' (m. 39.45')
 Nail & tag, S sd. p. pole S 90° W 39.60' (m. 39.50')

The selected location is accepted by me and is generally accepted by professional surveyors as the best available evidence of the position of the original corner.

C. Description of monument for corner and accessories established to perpetuate locating the position of the corner:

C-2 Set a Standard Kent County Monument

C/L USGS benchmark N 90° E 39.45'
 SW cor. conc. block garage N 65° E 184.60'
 NE cor. brk. veneer hse. #6375 N 45° W 146.95'
 SE cor. fndn. hse. #6375 N 60° W 113.18'
 Nail & K.C. remon. tag on S side P. pole S 90° W 39.50'



Signed by Randy J. Kolehouse
 EARTH TECH

Date 7/23/96

Surveyor's Michigan License No. 25854