

\$7.00
\$2.00

JAN 23 1996

COMMISSION

LAND CORNER RECORDATION CERTIFICATE
Filing Requirement of Act 74, Mich. P.A. 1970
KENT COUNTY REMONUMENTATION

For corners in

Kent (County)	Located in:	Corner Code #
1. Public Land Survey	T 5N R 11W	D-8
	T _____ R _____	_____
	T _____ R _____	_____
	T _____ R _____	_____
2. Property Controlling in Section	S _____ T _____ R _____	_____
	S _____ T _____ R _____	_____
3. Miscellaneous Property in Sec.	S _____ T _____ R _____	_____
	S _____ T _____ R _____	_____

STATE OF MICHIGAN
COUNTY OF KENT
RECEIVED FOR RECORD

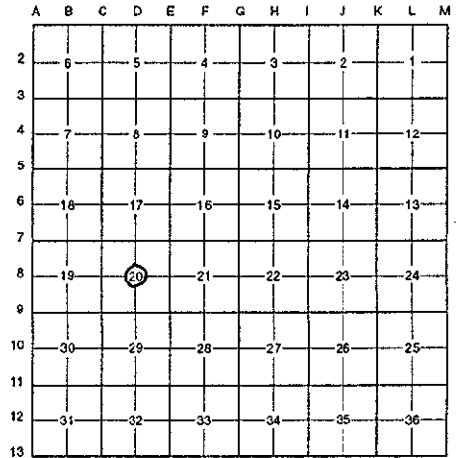
95 DEC 28 PM 2:21

REG. OF DEEDS
Eric S. Bond
8907

Register of Deeds Stamp & File Number

4. Lot No. _____, Recorded Plat _____
5. Private Claims _____

I, Randy Kolehouse, in a field survey on May 16 19 95, do hereby certify that under requirements of P.A. 74 Michigan P.A. of 1970, the corner points mentioned in lines 1 and 2 above were in conformance with regulations and rules therefore as required in the current manual of survey instructions of the United States Department of the interior, Bureau of Land Management or by a decree of a Court of Law and/or that the corner points mentioned in lines 3, 4 and 5 above were in conformance with the rules of the Michigan Board of Land Surveyors or by a Decree of a Court of Law; established, re-established, monumented, re-monumented, recovered, found as expressed below:



NOTE: Not more than 4 corners, all in the same town and range, may be recorded on this certificate.

A. Description of original monument and accessories and/or subsequent restoration:

D-8 This corner was not originally set by the G.L.O.

Date	Survey Notes	Williams & Works	Set Iron at Int. of Fences
1940-1963	Survey Notes Wit. Map	Williams & Works K.C. Surveyor	Iron
1974	L.C.R.C. #661	John Clapp	Set "T" Iron at Int. of 1/4 Lines
1993	L.C.R.C. #6748	Exxel Engineering	Replaced "T" Iron with K.C. Monument

B. Description of corner evidence found and/or method applied in restoring or reestablishing corner:

D-8 Found K.C. Monument per L.C.R.C. #6748. This monument was accepted at the Kent County Remonumentation Peer Group meeting held February 11, 1993. It is on the N-S 1/4 line and 1.2' South of the E-W 1/4 line. Monument is 10' N of E-W fence line.

L.C.R.C. #6748

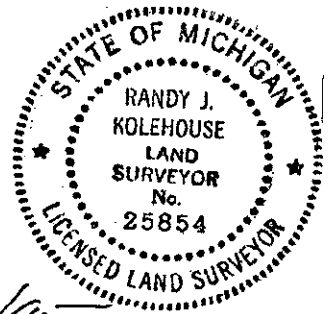
- Dbl headed nail & tag in S sde triple 12" Maple N85°W 35.63'
- Dbl headed nail & tag in SE sde 26" Maple N55°E 35.60'
- Dbl headed nail & tag in S sde 20" Maple N85°E 26.58'
- Dbl headed nail & tag in NE sde 16" Hickory S55°E 39.94'
- Dbl headed nail & tag in N'ly sde 12" W Cherry S60°W 50.71'

P.A. 345 1990 KENT COUNTY
PEER APPROVED 10/26/95
CHAIRMAN *Harry J. Huber*

C. Description of monument for corner and accessories established to perpetuate locating the position of the corner:

D-8 Standard 4" x 30" Kent County Monument.

- Nail & K.C. remon. tag in S sde triple 12" Maple N85°W 35.63'
- Nail & K.C. remon. tag in SE sde 26" Maple N55°E 35.60'
- Nail & K.C. remon. tag in S sde 20" Maple N85°E 26.58'
- Nail & K.C. remon. tag in NE sde 16" Hickory S55°E 39.94'
- Nail & K.C. remon. tag in in N'ly sde 12" W Cherry S60°W 50.71'



Signed by *Randy J. Kolehouse* Date 12/22/95
EARTH TECH

Surveyor's Michigan License No. 25854