

FEB 14 1997

LAND CORNER RECORDATION CERTIFICATE
 Filing Requirement of Act 74, Mich. P.A. 1970
 KENT COUNTY REMONUMENTATION

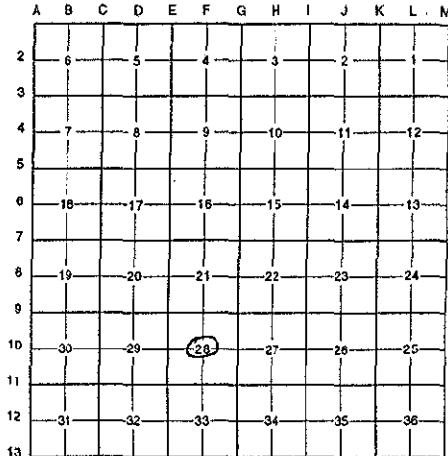
For corners in COMMISSION

Kent (County)	Located in: Gaines Township	Corner Code #
1. Public Land Survey	T <u>5N</u> R <u>11W</u>	<u>F-10</u>
	T _____ R _____	_____
	T _____ R _____	_____
	T _____ R _____	_____
2. Property Controlling in Section	S _____ T _____ R _____	_____
	S _____ T _____ R _____	_____
3. Miscellaneous Property in Sec.	S _____ T _____ R _____	_____
	S _____ T _____ R _____	_____

STATE OF MICHIGAN
 COUNTY OF KENT
 RECEIVED FOR RECORD
 96 AUG - 8 AM 8:44
 REG. OF DEEDS
 9259
 Register of Deeds Stamp & File Number

4. Lot No. _____, Recorded Plat _____
 5. Private Claims _____

I, Randy Kolehouse, in a field survey on April 25 19 96, do hereby certify that under requirements of P.A. 74 Michigan P.A. of 1970, the corner points mentioned in lines 1 and 2 above were in conformance with regulations and rules therefore as required in the current manual of survey instructions of the United States Department of the interior, Bureau of Land Management or by a decree of a Court of Law and/or that the corner points mentioned in lines 3, 4 and 5 above were in conformance with the rules of the Michigan Board of Land Surveyors or by a Decree of a Court of Law; established, re-established, monumented, re-monumented, recovered, found as expressed below:



NOTE: Not more than 4 corners, all in the same town and range, may be recorded on this certificate.

A. Description of original monument and accessories and/or subsequent restoration:

F-10 This corner was not originally set by the G.L.O.
 No information on record.

P.A. 345 1990 KENT COUNTY
 PEER APPROVED 5/30/96
 CHAIRMAN Harry Hubert

B. Description of corner evidence found and/or method applied in restoring or reestablishing corner:

F-10 Set a point at the intersection of 1/4 lines using previously monumented corners (N 1/4, S 1/4, E 1/4 and W 1/4). This corner falls in a wooded swamp 400' M/L North of a field division line.

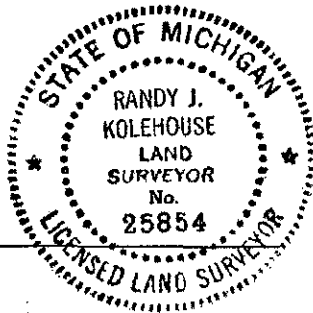
The selected location is accepted by me and is generally accepted by professional surveyors as the best available evidence of the position of the original corner.

C. Description of monument for corner and accessories established to perpetuate locating the position of the corner:

F-10 Set a Standard Kent County Monument
 Nail & K.C. remon. tag on NW side 10" Beech N 23° E 41.31'
 Nail & K.C. remon. tag on NE side 10" Beech N 77° W 32.32'
 Nail & K.C. remon. tag on W side 20" W. Oak S 19° W
 Nail & K.C. remon. tag on N side 28" Maple S 77° E 20.32'

Signed by Randy J. Kolehouse
 EARTH TECH

Date 7/23/96



Surveyor's Michigan License No. 25854