

\$7.00
\$2.00

JAN 23 1996

COMMISSION

LAND CORNER RECORDATION CERTIFICATE
Filing Requirement of Act 74, Mich. P.A. 1970
KENT COUNTY REMONUMENTATION

For corners in

Kent (County)	Located in:	Corner Code #
1. Public Land Survey	T <u>5N</u> R <u>11W</u>	<u>H-2</u>
	T _____ R _____	_____
	T _____ R _____	_____
	T _____ R _____	_____
2. Property Controlling in Section	S _____ T _____ R _____	<u>Seg. 2</u>
	S _____ T _____ R _____	_____
3. Miscellaneous Property in Sec.	S _____ T _____ R _____	_____
	S _____ T _____ R _____	_____

Seg 2

REG. OF DEEDS

Lucy S. Bond

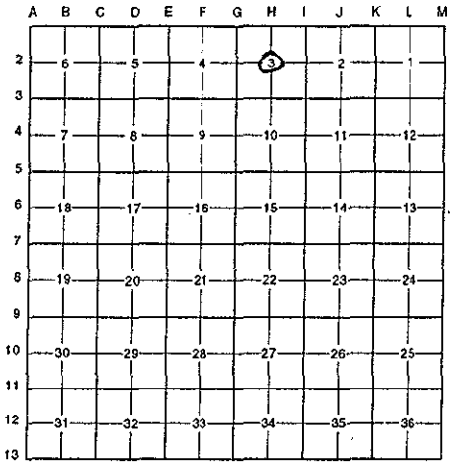
95 DEC 28 PM 2:21

STATE OF MICHIGAN
COUNTY OF KENT
RECEIVED FOR RECORD

8913

Register of Deeds Stamp & File Number

- 4. Lot No. _____, Recorded Plat _____
- 5. Private Claims _____



I, Randy Kolehouse, in a field survey on May 18 19 95, do hereby certify that under requirements of P.A. 74 Michigan P.A. of 1970, the corner points mentioned in lines 1 and 2 above were in conformance with regulations and rules therefore as required in the current manual of survey instructions of the United States Department of the interior, Bureau of Land Management or by a decree of a Court of Law and/or that the corner points mentioned in lines 3, 4 and 5 above were in conformance with the rules of the Michigan Board of Land Surveyors or by a Decree of a Court of Law; established, re-established, monumented, re-monumented, recovered, found as expressed below:

NOTE: Not more than 4 corners, all in the same town and range, may be recorded on this certificate.

A. Description of original monument and accessories and/or subsequent restoration:

H-2 This corner was not originally set by the G.L.O.

1978 Survey Notes Exxel Engineering Calculated Position of Center

No other information on record.

P.A. 345 1990 KENT COUNTY
PEER APPROVED 10/26/95
CHAIRMAN *Stan Hubel*

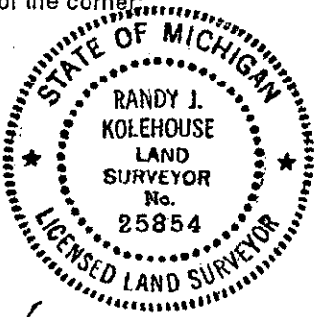
B. Description of corner evidence found and/or method applied in restoring or reestablishing corner:

H-2 Found a Kent County Monument at intersection of 1/4 lines. This point checks the calculated location of the Center Section as used by Exxel Engineering in their surveys. Found no record of this monument being set but because it is at the intersection of 1/4 lines, accepted as the Center of Section.

C. Description of monument for corner and accessories established to perpetuate locating the position of the corner:

H-2 Standard 4" x 30" Kent County Monument.

- Nail & K.C. remon. tag in N side Triple 10" Oak N 68° 81.43'
- Nail & K.C. remon. tag in W side 14" Maple N 11° W 84.64'
- Nail & K.C. remon. tag in E side 16" Beech N 5° E 11.82'
- Nail & K.C. remon. tag in SE side 12" Beech N 60° E 3.99'
- Nail & K.C. remon. tag in N face 28" Maple S 72° E 31.60'



Signed by *Randy J. Kolehouse* BARTH TECH

Date 12/22/95

Surveyor's Michigan License No. 25854