

\$7.00  
\$2.00

JAN 23 1996

LAND CORNER RECORDATION CERTIFICATE  
Filing Requirement of Act 74, Mich. P.A. 1970  
KENT COUNTY REMONUMENTATION

COMMISSION

For corners in

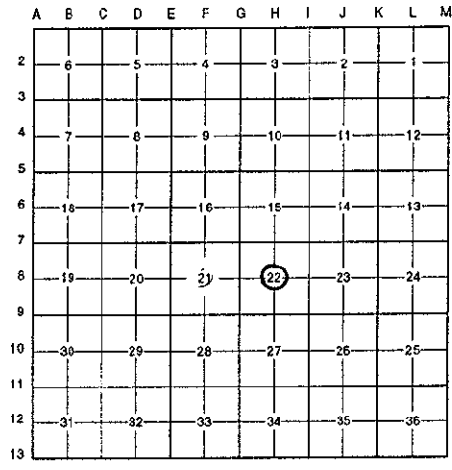
Kent (County)	Located in:	Corner Code #
1. Public Land Survey	T <u>5N</u> R <u>11W</u>	<u>H-8</u>
	T _____ R _____	_____
	T _____ R _____	_____
	T _____ R _____	_____
2. Property Controlling in Section	S _____ T _____ R _____	_____
	S _____ T _____ R _____	_____
3. Miscellaneous Property in Sec.	S _____ T _____ R _____	_____
	S _____ T _____ R _____	_____

STATE OF MICHIGAN  
COUNTY OF KENT  
RECEIVED FOR RECORD  
95 DEC 28 PM 2:21  
REG. OF DEEDS  
*Lucy Spauld*

8914

Register of Deeds Stamp & File Number

4. Lot No. \_\_\_\_\_, Recorded Plat \_\_\_\_\_  
5. Private Claims \_\_\_\_\_



I, Randy Kolehouse, in a field survey on May 16 19 95, do hereby certify that under requirements of P.A. 74 Michigan P.A. of 1970, the corner points mentioned in lines 1 and 2 above were in conformance with regulations and rules therefore as required in the current manual of survey instructions of the United States Department of the Interior, Bureau of Land Management or by a decree of a Court of Law and/or that the corner points mentioned in lines 3, 4 and 5 above were in conformance with the rules of the Michigan Board of Land Surveyors or by a Decree of a Court of Law; established, re-established, monumented, re-monumented, recovered, found as expressed below:

NOTE: Not more than 4 corners, all in the same town and range, may be recorded on this certificate.

A. Description of original monument and accessories and/or subsequent restoration:

H-8 This corner was not originally set by the G.L.O.  
1960 Wit. Map K.C. Surveyor RR Spike on Iron  
1975 L.C.R.C. #898 Exxel Engineering Set 3/4" Iron at Int. of 1/4 Lines

B. Description of corner evidence found and/or method applied in restoring or reestablishing corner:

H-8 Found a 3/4" iron per L.C.R.C. #898 as as set by Exxel Engineering at the intersection of 1/4 lines. Iron is within 0.1' of true position. Accepted 3/4" iron as Center Section.

L.C.R.C. #898

RR tie fence cor NNE 4.2'  
Nail in sde 324" W. Cherry W 16.80'  
Nail in sde 24" W. Cherry SSW 14.32'

P.A. 345 1990 KENT COUNTY  
PEER APPROVED 10/26/95  
CHAIRMAN *Harry Hubert*

C. Description of monument for corner and accessories established to perpetuate locating the position of the corner:

H-8 Replaced 3/4" iron with a Standrad 4" x 30" Kent County Monument.

Nail & K.C. remon. tag in SW face 24" Cherry West 16.80'  
Nail & K.C. remon. tag in N face 16" Maple West 14.16'  
Nail & K.C. remon. tag in E face 18" Maple S 30 E 37.04'  
Nail & K.C. remon. tag in N face 20" Beech N 60 E 10.75'



Signed by Randy Kolehouse Date 12/22/95  
EARTH TECH

Surveyor's Michigan License No. 25854