

**SURVEY & REMONUMENTATION**

FEB 14 1997

COMMISSION

**LAND CORNER RECORDATION CERTIFICATE**  
**Filing Requirement of Act 74, Mich. P.A. 1970**  
**KENT COUNTY REMONUMENTATION**

For corners in

Kent (County)	Located in:	Gaines Township	Corner Code #
1. Public Land Survey	T <u>5N</u>	R <u>11W</u>	<u>L-5</u>
	T _____	R _____	_____
	T _____	R _____	_____
	T _____	R _____	_____
2. Property Controlling in Section	S _____	T _____	R _____
	S _____	T _____	R _____
3. Miscellaneous Property in Sec.	S _____	T _____	R _____
	S _____	T _____	R _____

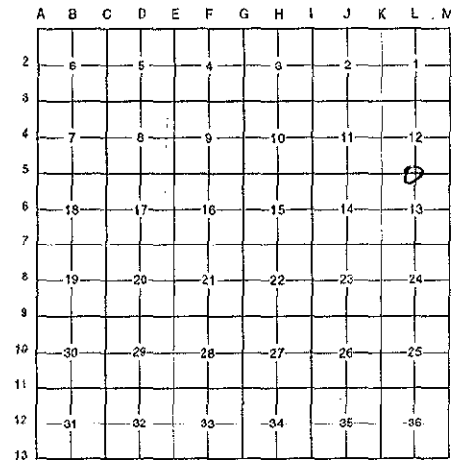
4. Lot No. \_\_\_\_\_, Recorded Plat \_\_\_\_\_  
 5. Private Claims \_\_\_\_\_

STATE OF MICHIGAN  
 COUNTY OF KENT  
 RECEIVED FOR RECORD  
 96 AUG -8 AM 8:47  
 REG. OF DEEDS  
*Eric Spang*

**9321**

Register of Deeds Stamp & File Number

I, Randy Kolehouse, in a field survey on January 5 19 96, do hereby certify that under requirements of P.A. 74 Michigan P.A. of 1970, the corner points mentioned in lines 1 and 2 above were in conformance with regulations and rules therefore as required in the current manual of survey instructions of the United States Department of the interior, Bureau of Land Management or by a decree of a Court of Law and/or that the corner points mentioned in lines 3, 4 and 5 above were in conformance with the rules of the Michigan Board of Land Surveyors or by a Decree of a Court of Law; established, re-established, monumented, re-monumented, recovered, found as expressed below:



**NOTE: Not more than 4 corners, all in the same town and range, may be recorded on this certificate.**

**A. Description of original monument and accessories and/or subsequent restoration:**

L-5	1831	G.L.O. Notes	Mullett	Set Post	P.A. 345 1990 KENT COUNTY
	1937	Witness Map	K.C. Surveyor	Concrete Monument	PEER APPROVED <u>3/2/96</u>
	1963	Witness Map	K.C. Surveyor	Iron	CHAIRMAN <u>Randy Kolehouse</u>
	1976	L.C.R.C. #959	McPherson	Iron Pipe	
	1982	L.C.R.C. #2841	Rob Jonker	Fnd. Iron & Monument / Set K.C. Monument	
	1994	L.C.R.C. #7156	Glaza & Associates	K.C. Monument	

This corner was originally approved by the Kent County Remonumentation Peer Group and monumented by Rob Jonker on 4/27/82 and was recorded per L.C.R.C. #2841.

**B. Description of corner evidence found and/or method applied in restoring or reestablishing corner:**

L-5 Found a Standard Kent County Monument in the C/L of 76th Street (bit.) running East & West 1' East of fence running North and South per L.C.R.C.'s #959 and #2841 as set by Rob Jonker in place of a 3/4" iron (short) in a 1" iron in the top of a 4" x 48" concrete monument (8" below grade) he found that checked L.C.R.C. #959 and K.C. Surveyor's records.

**L.C.R.C. #2841**

**L.C.R.C. #7156**

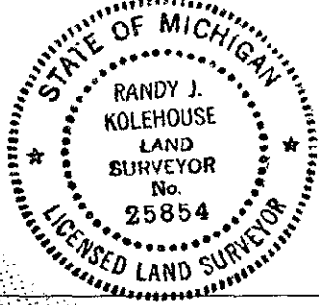
Remon. tag on W side p. pole S 05° W 58.8'	K.C. remon tag & nail in W side P. pole S 05° W 58.80'
Remon. tag on E side cor. fe. post N 01° W 26.14'	K.C. remon tag & nail in E side corner fence post N 01° W 26.60'
Remon. tag on SE side fe. post N 70° E 67.64'	K.C. remon tag & nail in SE side fence post N 70° E 67.64'
Remon. tag on S side t. pole N 75° W 109.8'	K.C. remon tag & nail in S side T. pole N 75° W 109.80'
Vertical cut on C/L S. end road culvert S 75° W 44.65'	Vertical cut on C/L South end road culvert S 75° W 44.65'

The selected location is accepted by me and is generally accepted by professional surveyors as the best available evidence of the position of the original corner.

**C. Description of monument for corner and accessories established to perpetuate locating the position of the corner:**

L-5 Standard Kent County Monument

- Nail & K.C. remon. tag on W side P. pole S 05° W 58.80'
- Nail & K.C. remon. tag on E side corner fence post N 01° W 26.60'
- Nail & K.C. remon. tag on SE side fence post N 70° E 67.64'
- Nail & K.C. remon. tag on S side T. pole N 75° W 109.80'
- Vertical cut on C/L South end road culvert S 75° W 44.65'



Signed by Randy J. Kolehouse

Date 7/23/96

Surveyor's Michigan License No. 25854