

MAR 03 1998

KENT COUNTY REMONUMENTATION

SECTION

LAND CORNER RECORDATION CERTIFICATE
Filing Requirement of Act 74, Mich. P.A. 1970

For corners in
KENT COUNTY
(County)

Located in:	Corner Code #
1. Public Land Survey T 6N R 9W	C-4
T R	
T R	
T R	
2. Property Controlling in Section S T R	
S T R	
3. Miscellaneous Property in Sec. S T R	
S T R	

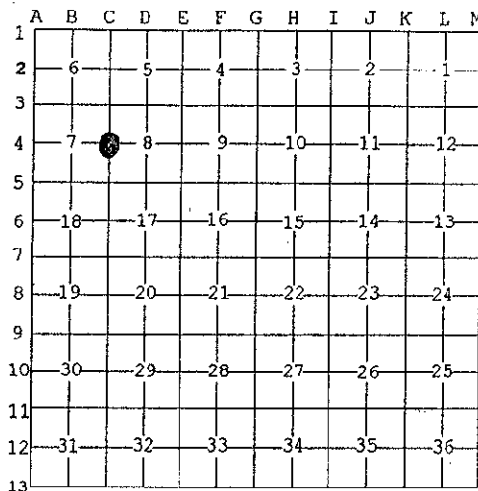
STATE OF MICHIGAN
COUNTY OF KENT
RECEIVED FOR RECORD
97 APR 29 AM 8:21
REG. OF DEEDS
Lucy Bond

9802

Register of Deeds Stamp & File Number

4. Lot No. _____, Recorded Plat _____
5. Private Claims _____

I, Kirk Breitels, in a field survey on Feb. 19, 1997 do hereby state that under requirements of P.A. 74, Michigan P.A. of 1970, the corner points mentioned in lines 1 and 2 above were in conformance with regulations and rules therefore as required in the current manual of survey instructions of the United States Department of the Interior, Bureau of Land Management or by a decree of a Court of Law and for that the corner points mentioned in lines 3, 4 and 5 above were in conformance with the rules of the Michigan Board of Land Surveyors or by a Decree of a Court of Law; established, re-established, monumented, recovered, found as expressed below:



NOTE: Not more than 2 corners, all in the same town and range, may be recorded on this certificate.

A. Description of original monument and accessories and/or subsequent restoration:

C-4	1830	GLO	Mullett	Set Post
	1991	LCRC #5765	Chettleburgh	Set Kent County Monument
	1995	LCRC #8176	Breitels	Kent County Monument

The position of this corner was previously approved by the Kent County Remonumentation Peer Group, monumented by Thomas Chettleburgh on 2/5/91 and was recorded per LCRC #5765.

B. Description of corner evidence found and/or method applied in restoring or reestablishing corner:

C-4 Found standard Kent Co. Mon. (Harrison) per witnesses from above LCRC as set by Thomas Chettleburgh. Location was established per survey information by others.

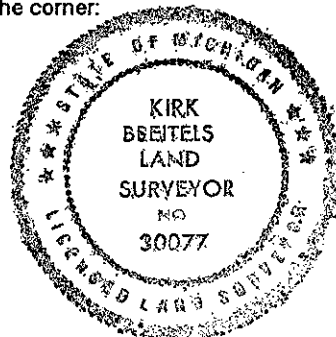
LCRC #5765	LCRC #8176
Remon. tag 11" Elm N58°E 14.46'	Nail & tag 11" Elm N58°E 14.46'
Remon. tag 16" Elm N82°E 28.32'	Nail & tag 16" Elm N82°E 28.32'
Remon. tag 16" Elm S49°E 41.11'	Nail & tag 20" Elm S49°E 41.06'
Remon. tag 10" Ash S08°E 30.51'	Nail & tag 12" Ash S08°E 30.48'
Remon. tag 36" Maple S58°W 68.34'	Nail & tag 40" Maple S58°W 68.31'
Remon. tag Tw. 12" Maple N31°W 5.09'	Nail & tag Tw. 12" Maple N31°W 5.09'

The selected location is accepted by me and is generally accepted by professional surveyors as the best available evidence of the position of the original corner.

C. Description of monument for corner and accessories established to perpetuate locating the position of the corner:

C-4 Standard Kent County Monument

Nail & KC Remon. tag SE side 12" Elm	N58°E 14.46'
Nail & KC Remon. tag N. side 18" Elm	N82°E 28.36'
Nail & KC Remon. tag SW side 22" Elm	S49°E 41.06'
Nail & KC Remon. tag W. side 15" Ash	S08°E 30.48'
Nail & KC Remon. tag NW side 40" Maple	S58°W 68.31'
Nail & KC Remon. tag NE side Tw. 14" Maple	N31°W 5.09'
S. edge Grand River is 90' m/l North	
C/L creek is 39' m/l East	



Signed by Kirk Breitels
Surveyor's Michigan License No. 30077

Date 3/27/97

P.A. 345 1990 KENT COUNTY

PEER APPROVED 3/27/97

CHAIRMAN Harry J. Hubbell