

**SURVEY & REMONUMENTATION**

MAR 03 1998

KENT COUNTY REMONUMENTATION

**SECTION**

**LAND CORNER RECORDATION CERTIFICATE**  
Filing Requirement of Act 74, Mich. P.A. 1970

For corners in  
KENT COUNTY  
(County)

Located In: Corner Code #

- |                                    |                         |       |
|------------------------------------|-------------------------|-------|
| 1. Public Land Survey              | T <u>6N</u> R <u>9W</u> | C-9   |
|                                    | T _____ R _____         | _____ |
|                                    | T _____ R _____         | _____ |
|                                    | T _____ R _____         | _____ |
| 2. Property Controlling in Section | S _____ T _____ R _____ | _____ |
|                                    | S _____ T _____ R _____ | _____ |
| 3. Miscellaneous Property in Sec.  | S _____ T _____ R _____ | _____ |
|                                    | S _____ T _____ R _____ | _____ |

REG. OF DEEDS  
*Luci St. Grand*  
97 APR 29 AM 8:21  
STATE OF MICHIGAN  
COUNTY OF KENT  
RECEIVED FOR RECORD

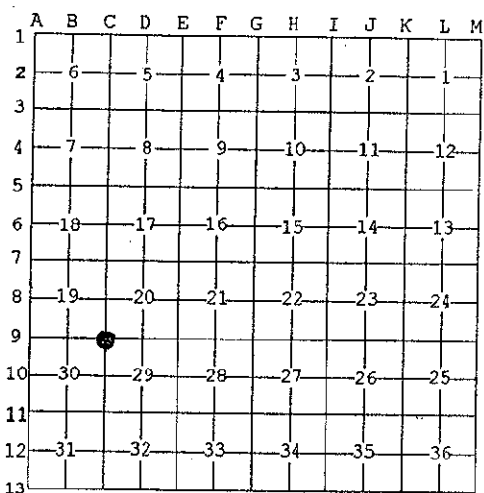
9807

Register of Deeds Stamp & File Number

4. Lot No. \_\_\_\_\_, Recorded Plat \_\_\_\_\_  
5. Private Claims \_\_\_\_\_

Kirk Breitels, in a field survey on Jan. 7, 1997 do hereby state that under requirements of P.A. 74, Michigan P.A. of 1970, the corner points mentioned in lines 1 and 2 above were in conformance with regulations and rules therefore as required in the current manual of survey instructions of the United States Department of the Interior, Bureau of Land Management or by a decree of a Court of Law and/or that the corner points mentioned in lines 3, 4 and 5 above were in conformance with the rules of the Michigan Board of Land Surveyors or by a Decree of a Court of Law, established, re-established, monumented, recovered, found as expressed below:

NOTE: Not more than 2 corners, all in the same town and range, may be recorded on this certificate.



A. Description of original monument and accessories and/or subsequent restoration:

C-9	1830	GLO	Mullett	Set Post
		Kent Co. Wit.		Iron in pavement 2.35 N. C/L
	1977	LCRC #1077	McCombs	Found corner 2.7' N. C/L
	1981	LCRC #2471	Jonker	Set Kent County Monument
	1995	LCRC #8181	Breitels	Kent County Monument

The position of this corner was previously approved by the Kent County Remonumentation Peer Group, monumented by Robert J. Jonker on 11/25/81 and was recorded per LCRC #2471

B. Description of corner evidence found and/or method applied in restoring or reestablishing corner:

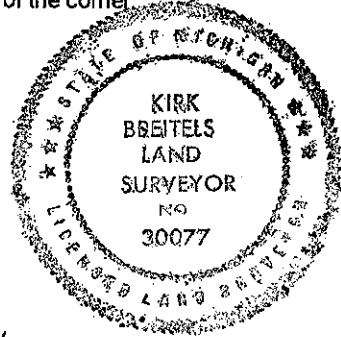
C-9 Found standard Kent Co. Mon. (Harrison) per witnesses from above LCRC as set by Robert J. Jonker in place of the 1" Solid Bar he found. Said 1" Solid Bar checks with Kent Co. Wit. & LCRC #1077.

<u>LCRC #2471</u>				<u>LCRC #8181</u>
Remon. tag P. Pole	S41°W	73.23'		same witnesses as LCRC #2471
Remon. tag 24" Oak	N60°W	62.87'		
Remon. tag 8" Tw. Oak	N08°W	29.6'		
Remon. tag 26" Oak	N58°E	54.02'		
Remon. tag P. Pole	S63°E	119.69'		

The selected location is accepted by me and is generally accepted by professional surveyors as the best available evidence of the position of the original corner.

C. Description of monument for corner and accessories established to perpetuate locating the position of the corner:

C-9 Standard Kent County Monument				
Nail & KC Remon. tag NW side P. Pole	S41°W	73.23'		
Nail & KC Remon. tag SW side 32" Oak	N60°W	62.93'		
Nail & KC Remon. tag E. side 16" Twin Oak	N08°W	29.54'		
Nail & KC Remon. tag SE side 36" Oak	N58°E	54.05'		
Nail & KC Remon. tag SW side P. Pole	S63°E	119.75'		
Sec. corner is 1.5' N. of C/L per MSHD maps				
C/L traveled way is South 2.7' m/1				



Signed by Kate Brund  
Surveyor's Michigan License No. 30077

Date 3/27/97

P.A. 345 1990 KENT COUNTY  
PEER APPROVED 3/27/97  
CHAIRMAN Harry Hubert