

**KENT COUNTY REMONUMENTATION
LAND CORNER RECORDATION CERTIFICATE**
Filing Requirement of Act 74, Mich. P.A. 1970

STATE OF MICHIGAN
COUNTY OF KENT
RECEIVED FOR RECORD
93 DEC 20 AM 11:57

For corners in

Kent
(County)

Located In:

Corner Code #/

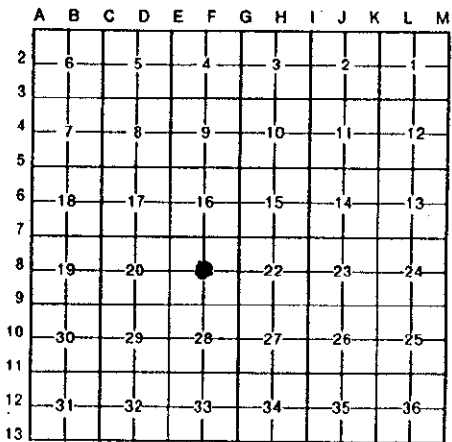
- | | | |
|------------------------------------|-------------------------|-------------------|
| 1. Public Land Survey | T <u>6N</u> R <u>9W</u> | <u>E-8</u> |
| | T _____ R _____ | <u>Center</u> |
| | T _____ R _____ | <u>Section 21</u> |
| | T _____ R _____ | <u>Lowell</u> |
| | T _____ R _____ | <u>Township</u> |
| 2. Property Controlling in Section | S _____ T _____ | _____ |
| | S _____ T _____ | _____ |
| 3. Miscellaneous Property in Sec. | S _____ T _____ | _____ |
| | S _____ T _____ | _____ |

W. J. Bond
REG. OF DEEDS

6854

Register of Deeds Stamp & File Number

4. Lot No. _____, Recorded Plat _____
5. Private Claims _____



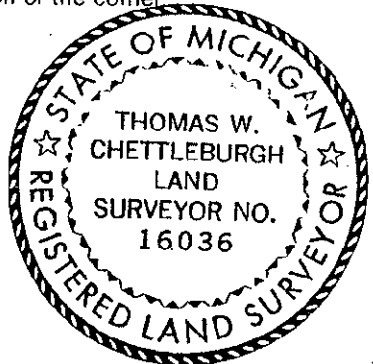
I, Thomas W. Chettleburgh, in a field survey on November 30, 19 93, do hereby certify that under requirements of P.A. 74, Michigan P.A. of 1970, the corner points mentioned in lines 1 and 2 above were in conformance with regulations and rules therefore as required in the current manual of survey instructions of the United States Department of the Interior, Bureau of Land Management or by a decree of a Court of Law and/or that the corner points mentioned in lines 3, 4 and 5 above were in conformance with the rules of the Michigan Board of Land Surveyors or by a Decree of a Court of Law; established, re-established, monumented, re-monumented, recovered, found as expressed below:

NOTE: Not more than 4 corners, all in the same town and range, may be recorded on this certificate.

A. Description of original monument and accessories and/or subsequent restoration:
Nederveld and Jonker 1981, set 3/4" iron at intersection of 1/4 lines - record LCRC #2086

B. Description of corner evidence found and/or method applied in restoring or reestablishing corner:
Found 3/4" iron-checked witnesses LCRC #2086
Intersection of 1/4 lines 0.05'N and 0.27'W
Hold 3/4" iron for corner
North 1/4 corner of Section 21 (F-7) N00°21'50"E 2643.06'
East 1/4 corner of Section 21 (G-8) S89°52'10"E 2647.58'
South 1/4 corner of Section 21 (F-9) S00°22'32"W 2634.36'
West 1/4 corner of Section 21 (E-8) N89°52'02"W 2626.69'
Replaced 3/4" iron with 4"X30" Harrison Monument

C. Description of monument for corner and accessories established to perpetuate locating the position of the corner:
4"X30" Harrison Monument
Nail/Tag SW side 10" Hickory N35°W 61.15'
Nail/Tag E side 16" Elm N05°E 22.77'
Nail/Tag SE side 6" Maple N55°E 67.65'
Nail/Tag N side 6" Elm S80°E 40.43'
Nail/Tag E side 6" Elm S00°E 26.70'



Signed by Thomas W. Chettleburgh Date December 20, 1993
Surveyor's Michigan License No. 16036