

MAR 03 1998

KENT COUNTY REMONUMENTATION

SECTION

LAND CORNER RECORDATION CERTIFICATE
Filing Requirement of Act 74, Mich. P.A. 1970

For corners in
KENT COUNTY

Located In:	Corner Code #
T 6N R 9W	G-5
T R	
T R	
T R	
T R	
S T R	
S T R	
S T R	
S T R	

STATE OF MICHIGAN
COUNTY OF KENT
RECEIVED FOR RECORD
97 APR 29 AM 8:22
REG. OF DEEDS
Lucy Bond

9839

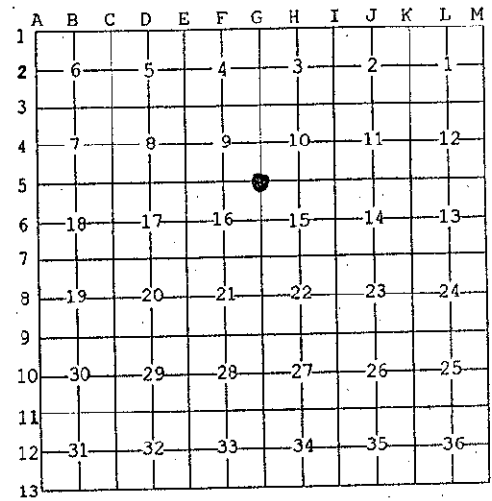
Register of Deeds Stamp & File Number

- 1. Public Land Survey
- 2. Property Controlling in Section
- 3. Miscellaneous Property in Sec.

- 4. Lot No. _____, Recorded Plat _____
- 5. Private Claims _____

I, Kirk Breitels, in a field survey on Jan. 30, 1997 do hereby state that under requirements of P.A. 74, Michigan P.A. of 1970, the corner points mentioned in lines 1 and 2 above were in conformance with regulations and rules therefore as required in the current manual of survey instructions of the United States Department of the Interior, Bureau of Land Management or by a decree of a Court of Law and /or that the corner points mentioned in lines 3, 4 and 5 above were in conformance with the rules of the Michigan Board of Land Surveyors or by a Decree of a Court of Law; established, re-established, monumented, recovered, found as expressed below:

NOTE: Not more than 2 corners, all in the same town and range, may be recorded on this certificate.



A. Description of original monument and accessories and/or subsequent restoration:

Corner Code	Year	Monument	Material	Notes
G-5	1830	GLO	Mullett	Set Post
	1954	Kent Co. Wit.		Stone
	1981	LCRC #1607	Bonnema	Pointed Stone
	1981	LCRC #2561	Bueche	Set Kent County Monument
	1995	LCRC #8212	Breitels	Kent County Monument

The position of this corner was previously approved by the Kent County Remonumentation Peer Group, monumented by John C. Bueche on 12/15/81 and was recorded per LCRC #2561.

B. Description of corner evidence found and/or method applied in restoring or reestablishing corner:
G-5 Found standard Kent Co. Mon. (Harrison) per witnesses from above LCRC as set by John C. Bueche in place of the Pointed Stone he found. Said Pointed Stone checks with Kent Co. Wit. & LCRC #1607.
LCRC #2561 & (LCRC #8212)

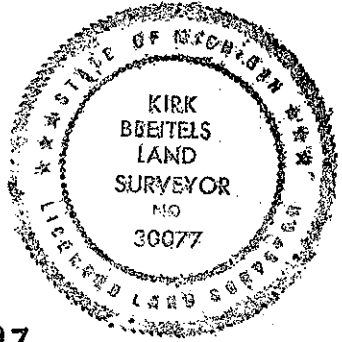
Remon. tag & nail 16" Pine	S15°W	17.33'	(17.34')
Remon. tag & nail 6" Cherry	N20°W	23.37'	(23.33')
Remon. tag & nail 10" Oak	N25°E	39.30'	(39.25')
80d nail 8" Oak	S80°E	6.32'	
80d nail 10" Oak	S35°W	29.00'	
80d nail Tw. 12" Oak	N40°W	42.30'	(42.02')
80d nail 16" Oak	N50°E	46.75'	

The selected location is accepted by me and is generally accepted by professional surveyors as the best available evidence of the position of the original corner.

C. Description of monument for corner and accessories established to perpetuate locating the position of the corner:

G-5 Standard Kent County Monument

KC Remon. tag & nail W. side 20" Pine	S15°W	17.34'
KC Remon. tag & nail W. side 8" W. Cherry	N20°W	23.33'
KC Remon. tag & nail W. side 12" Oak	N25°E	39.25'
80d nail S. side 10" Oak	S80°E	6.32'
80d nail W. side 14" Oak	S35°W	29.00'
KC Remon. tag & nail E. side 16" Oak	N40°W	42.02'
80d nail SE side 20" Oak	N50°E	46.75'



Signed by *Kirk Breitels*
Surveyor's Michigan License No. 30077

Date 3/27/97

P.A. 345 1990 KENT COUNTY
PEER APPROVED 3/27/97
CHAIRMAN *Harry Hubert*