

SURVEY & REMONUMENTATION

MAR 03 1998

KENT COUNTY REMONUMENTATION

SECTION

LAND CORNER RECORDATION CERTIFICATE
Filing Requirement of Act 74, Mich. P.A. 1970

For corners in
KENT COUNTY

Located In:	Corner Code #
T <u>6N</u> R <u>9W</u>	<u>G-6</u>
T _____ R _____	_____
T _____ R _____	_____
T _____ R _____	_____
T _____ R _____	_____
S _____ T _____ R _____	_____
S _____ T _____ R _____	_____
S _____ T _____ R _____	_____
S _____ T _____ R _____	_____

1. Public Land Survey

2. Property Controlling in Section

3. Miscellaneous Property in Sec.

4. Lot No. _____, Recorded Plat _____
5. Private Claims _____

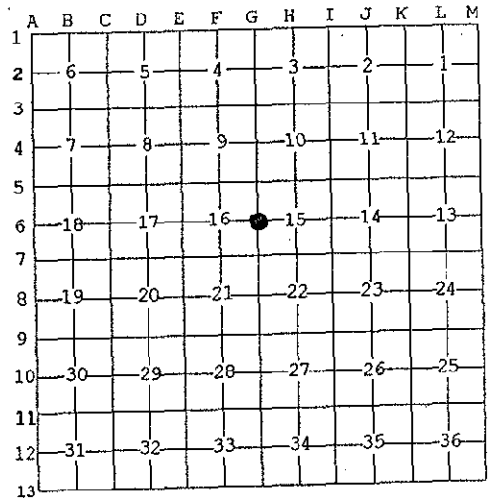
I, Kirk Breitels, in a field survey on Feb. 24, 1997 do hereby state that under requirements of P.A. 74, Michigan P.A. of 1970, the corner points mentioned in lines 1 and 2 above were in conformance with regulations and rules therefore as required in the current manual of survey instructions of the United States Department of the Interior, Bureau of Land Management or by a decree of a Court of Law and/or that the corner points mentioned in lines 3, 4 and 5 above were in conformance with the rules of the Michigan Board of Land Surveyors or by a Decree of a Court of Law; established, re-established, monumented, recovered, found as expressed below:

NOTE: Not more than 2 corners, all in the same town and range, may be recorded on this certificate.

STATE OF MICHIGAN
COUNTY OF KENT
RECEIVED FOR RECORD
97 APR 29 AM 8:22
REG. OF DEEDS
Lucy Bond

9840

Register of Deeds Stamp & File Number



A. Description of original monument and accessories and/or subsequent restoration:

G-6	1830	GLO	Mullett	Set Post
	1971	Kent Co. Wit.		Pointed Stone
	1979	LCRC #1246	Merdzinski	Stone
	1988	LCRC #4913	Marschall	Set Kent County Monument
	1995	LCRC #8213	Breitels	Kent County Monument

The position of this corner was previously approved by the Kent County Remonumentation Peer Group, monumented by Chris Marschall on 11/3/88 and was recorded per LCRC #4913.

B. Description of corner evidence found and/or method applied in restoring or reestablishing corner:

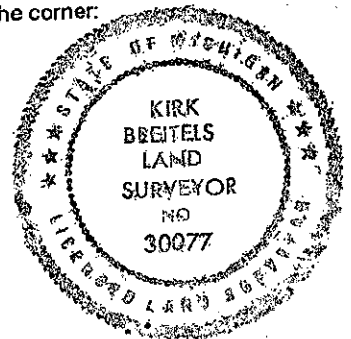
G-6 Found standard Kent Co. Mon. (Harrison) per witnesses from above LCRC as set by Chris Marschall in place of the 1/2" Iron he found. Said Iron checks with Kent Co. Wit. and LCRC #1246.

<u>LCRC #4913</u>		<u>LCRC #8213</u>	
Nail & tag 26" Oak	N01°W 2.37'	Nail & tag 30" Oak	N01°W 2.37'
Nail & tag 14" Oak	N65°W 21.98'	Nail & tag 18" Oak	S65°W 21.88'
Nail & tag 12" Oak	S35°W 35.25'	Nail & tag 15" Oak	S35°W 35.19'
Nail & tag 16" Oak	S02°W 17.38'	Nail & tag 18" Oak	S02°W 17.28'
Nail & tag 18" Oak	S85°E 37.88'	Nail & tag Tw. 22" Oak	S85°E 38.05'

The selected location is accepted by me and is generally accepted by professional surveyors as the best available evidence of the position of the original corner.

C. Description of monument for corner and accessories established to perpetuate locating the position of the corner:

<u>G-6 Standard Kent County Monument</u>			
Nail & KC Remon. tag W. side 30" Oak	N01°W	2.37'	
Nail & KC Remon. tag S. side 18" Oak	S65°W	21.88'	
Nail & KC Remon. tag SE side 15" Oak	S35°W	35.19'	
Nail & KC Remon. tag E. side 18" Oak	S02°W	17.28'	
Nail & KC Remon. tag S. side Tw. 22" Oak	S85°E	38.05'	



Signed by *Kirk Breitels*
Surveyor's Michigan License No. 30077

Date 3/27/97

P.A. 345 1990 KENT COUNTY
PEER APPROVED 3/27/97
CHAIRMAN *James Hubert*