

SURVEY & REMONUMENTATION

MAR 03 1998

KENT COUNTY REMONUMENTATION

LAND CORNER RECORDATION CERTIFICATE
Filing Requirement of Act 74, Mich. P.A. 1970

For corners in **SECTION**

KENT COUNTY

(County)

Located In:

Corner Code #

1. Public Land Survey

T 6N R 9W G-10

T _____ R _____

T _____ R _____

T _____ R _____

2. Property Controlling in Section

S _____ T _____ R _____

S _____ T _____ R _____

3. Miscellaneous Property in Sec.

S _____ T _____ R _____

S _____ T _____ R _____

STATE OF MICHIGAN
COUNTY OF KENT
RECEIVED FOR RECORD

97 APR 29 AM 8:23

REG. OF DEEDS

Luci Standa

9844

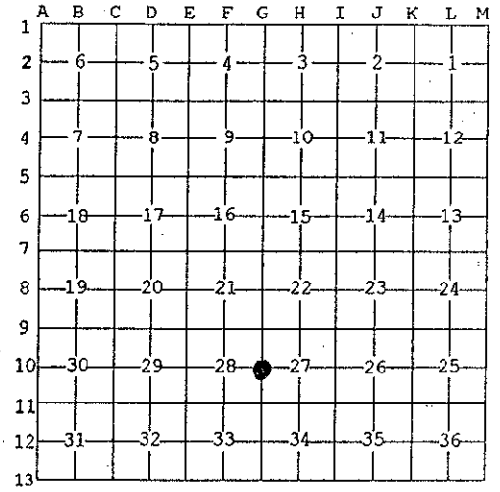
Register of Deeds Stamp & File Number

4. Lot No. _____, Recorded Plat _____

5. Private Claims _____

I, Kirk Breitels, in a field survey on Jan. 27, 1997 do hereby state that under requirements of P.A. 74, Michigan P.A. of 1970, the corner points mentioned in lines 1 and 2 above were in conformance with regulations and rules therefore as required in the current manual of survey instructions of the United States Department of the Interior, Bureau of Land Management or by a decree of a Court of Law and /or that the corner points mentioned in lines 3, 4 and 5 above were in conformance with the rules of the Michigan Board of Land Surveyors or by a Decree of a Court of Law; established, re-established, monumented, recovered, found as expressed below:

NOTE: Not more than 2 corners, all in the same town and range, may be recorded on this certificate.



A. Description of original monument and accessories and/or subsequent restoration:

G-10	1830	GLO	Mullett	Set Post
	1959	Kent Co. Wit.		2" Iron
	1971	LCRC #41	Chambers	Mon. Box
	1981	LCRC #2256	Merdziski	Set Kent County Monument in mon. box
	1995	LCRC #8217	Breitels	Kent County Monument

The position of this corner was previously approved by the Kent County Remonumentation Peer Group, monumented by John A. Merdzinski on 6/19/81 and was recorded per LCRC #2256

B. Description of corner evidence found and/or method applied in restoring or reestablishing corner:

G-10 Found standard Kent Co. Mon. (Harrison) per witnesses from above LCRC as set by John A. Merdzinski in the Mon. Box he found. Said Mon. Box checks with Kent Co. Wit. and LCRC #41.

LCRC #2256

LCRC #8217

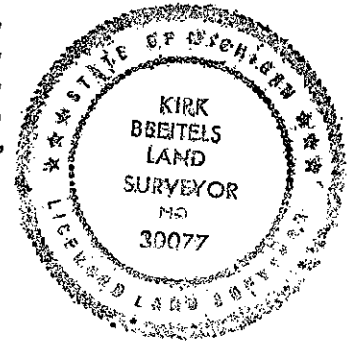
NW cor. CB casting	N50°W 20.67'	NW cor. CB casting	N50° 20.67'
NE cor. CB casting	N60°E 21.13'	NE cor. CB casting	N60°E 21.13'
Nail & tag Top guard post	S75°W 23.62'	Nail & tag top guard post	S70°W 21.30'
Nail & tag Top guard post	S65°E 23.78'	Nail & tag top guard post	S70°E 22.45'
S. edge steel plate bridge North	38.08'	S. edge steel plat bridge North	38.08'

The selected location is accepted by me and is generally accepted by professional surveyors as the best available evidence of the position of the original corner.

C. Description of monument for corner and accessories established to perpetuate locating the position of the corner:

G-10 Standard Kent County Monument

NW cor. CB casting	N50°W 20.67'
NE cor. CB casting	N60°E 21.13'
Nail & tag Top of 4" x 6" wood guard post	S70°W 21.30'
Nail & tag Top of 4" x 6" wood guard post	S70°E 22.45'
S. edge steel plate at S. line of bridge to I-96	North 38.08'
On C/L Blktp. Road North & South	



Signed by *Kirk Breitels*

Date 3/27/97

Surveyor's Michigan License No. 30077

P.A. 345 1990 KENT COUNTY
PEER APPROVED 3/27/97
CHAIRMAN *Kerry Kabers*