

**KENT COUNTY REMONUMENTATION
LAND CORNER RECORDATION CERTIFICATE
Filing Requirement of Act 74, Mich. P.A. 1970**

STATE OF MICHIGAN
COUNTY OF KENT
RECEIVED FOR RECORD

93 DEC 20 AM 11:57

Lucy Bond
REG. OF DEEDS

6855

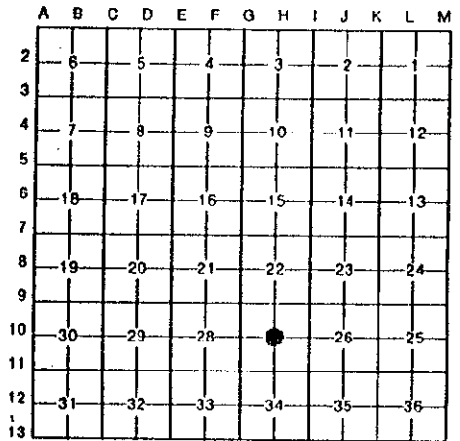
Register of Deeds Stamp & File Number

For corners in Kent (County) Located In: _____ Corner Code #/# _____

1. Public Land Survey	T <u>6N</u> R <u>9W</u>	H-10
	T _____ R _____	Center
	T _____ R _____	Section 27
	T _____ R _____	Lowell
2. Property Controlling in Section	S _____ T _____ R _____	Township
	S _____ T _____ R _____	
3. Miscellaneous Property in Sec.	S _____ T _____ R _____	
	S _____ T _____ R _____	

4. Lot No. _____, Recorded Plat _____

5. Private Claims _____



I, Thomas W. Chettleburgh, in a field survey on November 30, 19 93, do hereby certify that under requirements of P.A. 74, Michigan P.A. of 1970, the corner points mentioned in lines 1 and 2 above were in conformance with regulations and rules therefore as required in the current manual of survey instructions of the United States Department of the Interior, Bureau of Land Management or by a decree of a Court of Law and/or that the corner points mentioned in lines 3, 4 and 5 above were in conformance with the rules of the Michigan Board of Land Surveyors or by a Decree of a Court of Law; established, re-established, monumented, re-monumented, recovered, found as expressed below:

NOTE: Not more than 4 corners, all in the same town and range, may be recorded on this certificate.

A. Description of original monument and accessories and/or subsequent restoration:
No record of corner during research.

B. Description of corner evidence found and/or method applied in restoring or reestablishing corner:
Hold intersection of 1/4 lines for corner
North 1/4 corner of Section 27 (H-9) N00°07'29"E 2641.82'
East 1/4 corner of Section 27 (I-10) S89°56'31"E 2661.61'
South 1/4 corner of Section 27 (H-11) S00°07'29"W 2649.61'
West 1/4 corner of Section 27 (G-10) N89°56'31"W 2667.46'

Corner falls in South bituminous shoulder of the East bound lane of I-96 6.69' South of South edge concrete pavement.
Set PK rail at corner
Set 4"X30" Harrison Monument 87.26' South of corner on N-S 1/4 line

C. Description of monument for corner and accessories established to perpetuate locating the position of the corner:
Witness Corner
4"X30" Harrison Monument with witness cap
PK Nail (Center Section) North 87.26'
Nail/Tag N side 15" Oak S85°W 3.80'
Nail/Tag SE side 11" Maple S73°W 23.60'
Nail/Tag E side 20" Maple S23°W 38.30'
Nail/Tag SW side 12" Maple S27°E 11.24'
Nail/Tag N side 18" Ash S70°E 76.93'
E - W R.O.W. Fence Line I-96 North 1.50'
N - S Fence Line West 3.00'



Signed by Thomas W. Chettleburgh Date December 20, 1993
Surveyor's Michigan License No. 16036