

SURVEY & REMONUMENTATION

MAR 03 1998

KENT COUNTY REMONUMENTATION

SECTION

LAND CORNER RECORDATION CERTIFICATE
Filing Requirement of Act 74, Mich. P.A. 1970

For corners in
KENT COUNTY
(County)

Located In: Corner Code #

T	_____	R	_____	_____
T	_____	R	_____	_____
T	_____	R	_____	_____
T	_____	R	_____	_____
S <u>7</u>	T <u>6N</u>	R <u>9W</u>	_____	Wit. Mon. on
S	T	R	_____	E-W 1/4 line
S	T	R	_____	_____
S	T	R	_____	_____

STATE OF MICHIGAN
COUNTY OF KENT
RECEIVED FOR RECORD

97 NOV 13 PM 1:00

REG. OF DEEDS

other code #2

10282
Register of Deeds Stamp & File Number

- 1. Public Land Survey
- 2. Property Controlling in Section
- 3. Miscellaneous Property in Sec.
- 4. Lot No. _____, Recorded Plat _____
- 5. Private Claims _____

Kirk Breitels, in a field survey on Aug. 19, 1997 do hereby state that under requirements of P.A. 74, Michigan P.A. of 1970, the corner points mentioned in lines 1 and 2 above were in conformance with regulations and rules therefore as required in the current manual of survey instructions of the United States Department of the Interior, Bureau of Land Management or by a decree of a Court of Law and /or that the corner points mentioned in lines 3, 4 and 5 above were in conformance with the rules of the Michigan Board of Land Surveyors or by a Decree of a Court of Law; established, re-established, monumented, recovered, found as expressed below.

NOTE: Not more than 2 corners, all in the same town and range, may be recorded on this certificate.

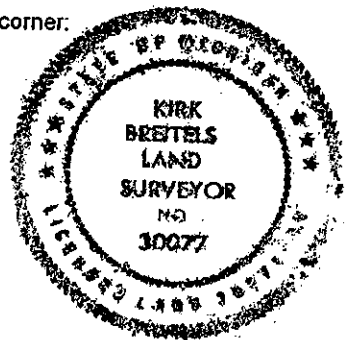
1	A	B	C	D	E	F	G	H	I	J	K	L	M
2		6		5		4		3		2		1	
3													
4		7		8		9		10		11		12	
5													
6		18		17		16		15		14		13	
7													
8		19		20		21		22		23		24	
9													
10		30		29		28		27		26		25	
11													
12		31		32		33		34		35		36	
13													

A. Description of original monument and accessories and/or subsequent restoration:
Not Set by GLO
See LCRC # 10280 for Central 1/4 corner (B-4) of Sec. 7

B. Description of corner evidence found and/or method applied in restoring or reestablishing corner:
Established a point on the true E-W 1/4 line 2100.23' West of the East 1/4 corner and 543.19' West of the C 1/4 corner as referred to in "A".
The location described above is accepted by me and is generally accepted by professional surveyors as the best available evidence of the corner.

P.A. 345 1990 KENT COUNTY
PEER APPROVED 8/22/97
CHAIRMAN Hugh Huber

C. Description of monument for corner and accessories established to perpetuate locating the position of the corner:
Set Harrison Monument with witness cap at location described in "B"
Nail & KC Remon. tag W. side 30" Oak S05°E 55.01'
Nail & KC Remon. tag N. side 30" Ash S65°E 141.25'
Nail & KC Remon. tag N. side 24" Maple S90°E 135.78'
Nail & KC Remon. tag SE side 32" Oak N55°E 100.04'
Nail & KC Remon. tag W. side 36" Oak N30°E 53.64'
Nail & KC Remon. tag W. side 28" Oak N05°W 114.01'



Signed by Kirk Breitels
Surveyor's Michigan License No. 30077

Date 10/30/97