

SURVEY & REMONUMENTATION

FEB 14 1997

COMMISSION

KENT COUNTY REMONUMENTATION

LAND CORNER RECORDATION CERTIFICATE
Filing Requirement of Act 74, Mich. P.A. 1970

STATE OF MICHIGAN
COUNTY OF KENT
RECEIVED FOR RECORD
95 MAR 20 AM 8:45
REG. OF DEEDS
David J. ...

For corners in
KENT COUNTY
(County)

Located In:	Corner Code #
T 6N R 10W	D-7
T R	
T R	
T R	
T R	
S T R	
S T R	
S T R	
S T R	

- Public Land Survey
- Property Controlling in Section
- Miscellaneous Property in Sec.

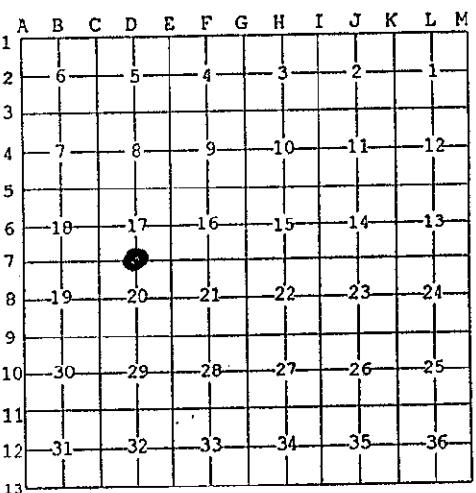
8949

Register of Deeds Stamp & File Number

4. Lot No. _____, Recorded Plat _____
5. Private Claims _____

I, Kirk Breitels, in a field survey on Feb. 12, 1996 do hereby state that under requirements of P.A. 74, Michigan P.A. of 1970, the corner points mentioned in lines 1 and 2 above were in conformance with regulations and rules therefore as required in the current manual of survey instructions of the United States Department of the Interior, Bureau of Land Management or by a decree of a Court of Law and for that the corner points mentioned in lines 3, 4 and 5 above were in conformance with the rules of the Michigan Board of Land Surveyors or by a Decree of a Court of Law; established, re-established, monumented, recovered, found as expressed below:

NOTE: Not more than 2 corners, all in the same town and range, may be recorded on this certificate.



A. Description of original monument and accessories and/or subsequent restoration:

D-7	1831	GLO	Mullett	Set Post
	1959	Kent Co. Wit.		4" Vit. Pipe
	1973	LCRC #470	Spicer	"T" Iron in Vit. Pipe
	1981	LCRC #1586	Merdzinski	Set Kent County Monument
	1992	LCRC #6714	Brintnall	Kent County Monument
	1994	LCRC #7103	Bueche	Kent County Monument

P.A. 345 1990 KENT COUNTY

PEER APPROVED 3/7/96
CHAIRMAN *Harold Hubert*

The position of this corner was previously approved by the Kent County Remonumentation Peer Group, monumented by John A. Merdzinski on 1/29/81 and was recorded per LCRC #1586

B. Description of corner evidence found and/or method applied in restoring or reestablishing corner:

D-7 Found standard Kent Co. Mon. (Harrison) per witnesses from above LCRC as set by John A. Merdzinski in place of the "T" Iron inside 4" vit. clay pipe he found. Said "T" Iron checks with Kent Co. Wit. and LCRC #470.

LCRC #1586, #6714, #7103

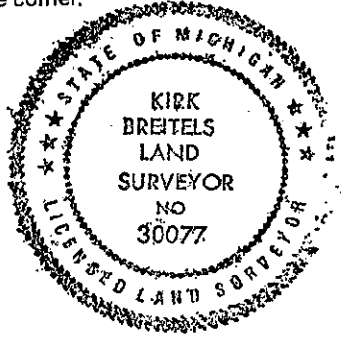
Nail & KC Remon. tag E. side 14" Hickory	N10°E	15.80'	Nail & KC Remon. tag
Nail & KC Remon. tag S. side 10" Maple	N70°E	22.84'	N. side 14" Ash
Nail & KC Remon. tag S. side 16" Maple	S80°E	44.11'	N60°W 5.77'
Nail & KC Remon. tag W. side 18" Maple	S20°E	7.65'	
Nail & KC Remon. tag SE side 16" Elm	S40°W	26.08'	

The selected location is accepted by me and is generally accepted by professional surveyors as the best available evidence of the position of the original corner.

C. Description of monument for corner and accessories established to perpetuate locating the position of the corner:

D-7 Standard Kent County Monument

Nail & KC Remon. tag E. side 14" Hickory	N10°E	15.85'
16D Nail S. side 10" Maple	N70°E	22.81'
16D Nail S. side 16" Maple	S80°E	44.06'
16D Nail W. side 18" Maple	S20°E	7.61'
16D Nail SE side 16" Elm	S40°W	26.04'
Nail & KC Remon. tag N. side 14" Ash	N60°W	5.77'



Signed by *Kirk Breitels*
Surveyor's Michigan License No. 30077

Date 3/1/96