

SURVEY & REMONUMENTATION

FEB 14 1997

KENT COUNTY REMONUMENTATION

COMMISSION

LAND CORNER RECORDATION CERTIFICATE
Filing Requirement of Act 74, Mich. P.A. 1970

STATE OF MICHIGAN
 COUNTY OF KENT
 RECEIVED FOR RECORD
 96 MAR 20 AM 8:45
 REG. OF DEEDS
[Signature]

For corners in
KENT COUNTY
(County)

Located In:	Corner Code #
T 6N R 10W	E-3
T R	
T R	
T R	
T R	
S T R	
S T R	
S T R	
S T R	

1. Public Land Survey
2. Property Controlling in Section
3. Miscellaneous Property in Sec.

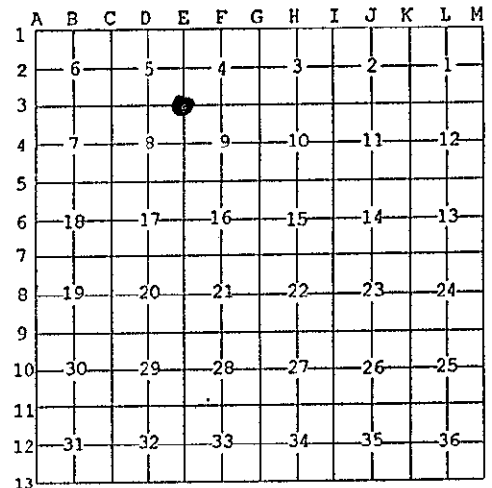
8952

Register of Deeds Stamp & File Number

4. Lot No. _____, Recorded Plat _____
5. Private Claims _____

I, Kirk Breitels, in a field survey on Feb. 19, 1996 do hereby state that under requirements of P.A. 74, Michigan P.A. of 1970, the corner points mentioned in lines 1 and 2 above were in conformance with regulations and rules therefore as required in the current manual of survey instructions of the United States Department of the Interior, Bureau of Land Management or by a decree of a Court of Law and/or that the corner points mentioned in lines 3, 4 and 5 above were in conformance with the rules of the Michigan Board of Land Surveyors or by a Decree of a Court of Law, established, re-established, monumented, recovered, found as expressed below:

NOTE: Not more than 2 corners, all in the same town and range, may be recorded on this certificate.



A. Description of original monument and accessories and/or subsequent restoration:

E-3	1831	GLO	Mullett	Set Post
	1954	Kent Co. Wit.		Iron
	1972	LCRC #164	Bonnema	Monument
	1972	LCRC #1165	Bonnema	Monument
	1982	LCRC #2732	Merdzinski	Set Kent County Monument
	1994	LCRC #7108	Bueche	Kent County Monument

P.A. 345 1990 KENT COUNTY
 PEER APPROVED 3/7/96
 CHAIRMAN *[Signature]*

The position of this corner was previously approved by the Kent County Remonumentation Peer Group, monumented by John A. Merdzinski on 2/3/82 and was recorded per LCRC #2732

B. Description of corner evidence found and/or method applied in restoring or reestablishing corner:

E-3 Found standard Kent Co. Mon. (Harrison) per witnesses from above LCRC as set by John A. Merdzinski in place of the Concrete Monument he found. Said Concrete Monument checks with Kent Co. Wit. and LCRC's #164 & #1165.
 LCRC #2732 & #7108

Nail & KC Remon. tag S. side 24" Oak	N90°W	12.47'	Nail & KC Remon. tag
Nail & KC Remon. tag NE side 12" Maple	N45°W	15.46'	W. side dbl. 22" Cherry
Nail & KC Remon. tag W. side 30" Oak	N00°E	23.27'	S10°W 7.04'
Nail & KC Remon. tag W. side 20" Cherry	N00°E	1.40'	
Nail & KC Remon. tag SW side 28" Oak	S30°E	22.32'	

The selected location is accepted by me and is generally accepted by professional surveyors as the best available evidence of the position of the original corner.

C. Description of monument for corner and accessories established to perpetuate locating the position of the corner:

E-3 Standard Kent County Monument

Nail & KC Remon. tag S. side 24" Oak	N90°W	12.49'
Nail & KC Remon. tag NE side 12" Maple	N45°W	15.50'
Nail & KC Remon. tag W. side 30" Oak	N00°E	23.27'
Nail & KC Remon. tag W. side 20" Cherry	N00°E	1.40'
Nail & KC Remon. tag SW side 28" Oak	S30°E	22.32'
Nail & KC Remon. tag W. side dbl. 22" Cherry	S10°W	7.04'



Signed by *[Signature]*
 Surveyor's Michigan License No. 30077

Date 3/1/96