

**SURVEY & REMONUMENTATION**

FEB 14 1997

KENT COUNTY REMONUMENTATION

COMMISSION

LAND CORNER RECORDATION CERTIFICATE  
Filing Requirement of Act 74, Mich. P.A. 1970

For corners in

KENT COUNTY

(County)

Located In:

Corner Code #

1. Public Land Survey

T	<u>6N</u>	R	<u>10W</u>	E-4
T	_____	R	_____	_____
T	_____	R	_____	_____
T	_____	R	_____	_____
S	_____	T	_____	_____
S	_____	T	_____	_____
S	_____	T	_____	_____
S	_____	T	_____	_____

2. Property Controlling in Section

3. Miscellaneous Property in Sec.

4. Lot No. \_\_\_\_\_, Recorded Plat \_\_\_\_\_

5. Private Claims \_\_\_\_\_

I, Kirk Breitels, in a field survey on Feb. 5, 1996 do hereby state that under requirements of P.A. 74, Michigan P.A. of 1970, the corner points mentioned in lines 1 and 2 above were in conformance with regulations and rules therefore as required in the current manual of survey instructions of the United States Department of the Interior, Bureau of Land Management or by a decree of a Court of Law and/or that the corner points mentioned in lines 3, 4 and 5 above were in conformance with the rules of the Michigan Board of Land Surveyors or by a Decree of a Court of Law; established, re-established, monumented, recovered, found as expressed below:

NOTE: Not more than 2 corners, all in the same town and range, may be recorded on this certificate.

A. Description of original monument and accessories and/or subsequent restoration:

E-4	1831	GLO	Mullett	Set Post
	1974	LCRC #653	Spicer	Iron
	1981	LCRC #1887	Merdzinski	1" Iron
	1994	LCRC #7109	Bueche	Set Kent County Monument
				Kent County Monument

P.A. 345 1990 KENT COUNTY

PEER APPROVED 3/7/96  
CHAIRMAN Hans Huber

The position of this corner was previously approved by the Kent County Remonumentation Peer Group, monumented by John A Merzinski on 5/21/81 and was recorded per LCRC #1887

B. Description of corner evidence found and/or method applied in restoring or reestablishing corner:

E-4 Found standard Kent Co. Mon. (Harrison) per witnesses from above LCRC as set by John A. Merdzinski in place of the 1" Iron over a 3/4" Iron he found. Both Irons check with Kent Co. Wit. and LCRC #653.

LCRC #1887 & #7109

Nail & KC Remon. tag W. side dbl. 18" Oak	N10°E	34.77'
Nail & KC Remon. tag N. side 20" Box Elder	S75°E	62.10'
Nail & KC Remon. tag E. side 10" Maple	S05°E	62.14'
Nail & KC Remon. tag SE side P. Pole	S50°W	70.59'
Nail & KC Remon. tag S. side 18" Oak	N75°W	73.22'

The selected location is accepted by me and is generally accepted by professional surveyors as the best available evidence of the position of the original corner.

C. Description of monument for corner and accessories established to perpetuate locating the position of the corner:

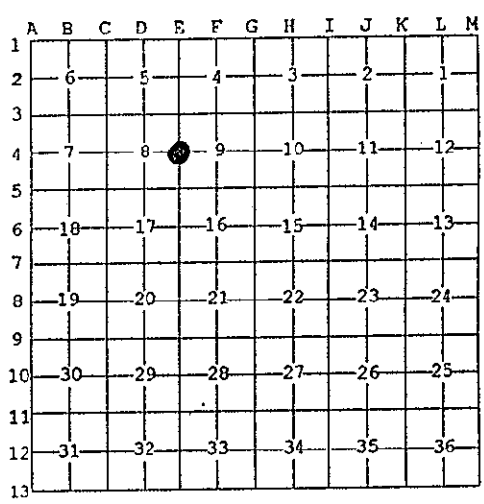
E-4 Standard Kent County Monument

Nail & KC Remon. tag W. side dbl. 20" Oak	N10°E	34.80'
Nail & KC Remon. tag N. side 22" Box Elder	S75°E	62.13'
Nail & KC Remon. tag E. side 12" Maple	S05°E	62.20'
Nail & KC Remon. tag SE side P. Pole	S50°W	70.59'
Nail & KC Remon. tag S. side 22" Oak	N75°W	73.29'
C/L bit. road E-W is N. 2'±	On tree row N-S	

STATE OF MICHIGAN  
COUNTY OF KENT  
RECEIVED FOR RECORD  
96 MAR 20 AM 8:45  
REG. OF DEEDS  
*Luis St. Paul*

8953

Register of Deeds Stamp & File Number



Signed by *Kirk Breitels*  
Surveyor's Michigan License No. 30077

Date 3/1/96

