

SURVEY & REMONUMENTATION

FEB 14 1997

COMMISSION KENT COUNTY REMONUMENTATION

LAND CORNER RECORDATION CERTIFICATE
Filing Requirement of Act 74, Mich. P.A. 1970

For corners in
KENT COUNTY
(County)

Located In:	Corner Code #
T 6N R 10W	E-11
T R	
T R	
T R	
S T R	
S T R	
S T R	
S T R	

- 1. Public Land Survey
- 2. Property Controlling in Section
- 3. Miscellaneous Property in Sec.

4. Lot No. _____, Recorded Plat _____
5. Private Claims _____

STATE OF MICHIGAN
COUNTY OF KENT
RECEIVED FOR RECORD

95 MAR 20 AM 8:45

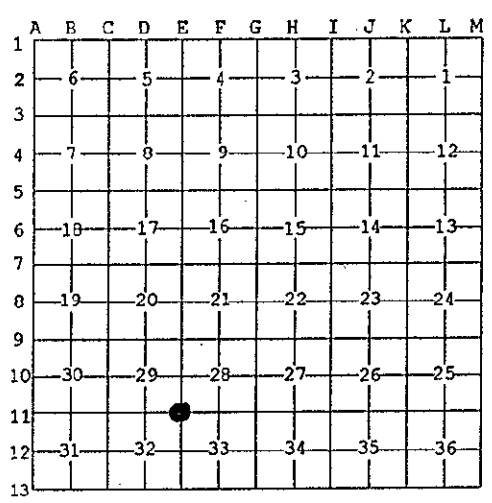
REG. OF DEEDS
Lucy Spauld

8959

Register of Deeds Stamp & File Number

I, Kirk Breitels, in a field survey on Feb. 20, 1996 do hereby state that under requirements of P.A. 74, Michigan P.A. of 1970, the corner points mentioned in lines 1 and 2 above were in conformance with regulations and rules therefore as required in the current manual of survey instructions of the United States Department of the Interior, Bureau of Land Management or by a decree of a Court of Law and/or that the corner points mentioned in lines 3, 4 and 5 above were in conformance with the rules of the Michigan Board of Land Surveyors or by a Decree of a Court of Law; established, re-established, monumented, recovered, found as expressed below:

NOTE: Not more than 2 corners, all in the same town and range, may be recorded on this certificate.



A. Description of original monument and accessories and/or subsequent restoration:

E-11	1831	GLO	Mullett	Set Post
	1914	Williams & Works		Stone
	1935	Kent Co. Wit.		1" Iron
	1984	LCRC #3706	Chettleburgh	Set Kent County Monument
	1994	LCRC #7116	Bueche	Kent County Monument

P.A. 345 1990 KENT COUNTY
PEER APPROVED 3/7/96
CHAIRMAN *Thomas Chettleburgh*

The position of this corner was previously approved by the Kent County Remonumentation Peer Group, monumented by Thomas Chettleburgh on 12/20/83 and recorded per LCRC #3706

B. Description of corner evidence found and/or method applied in restoring or reestablishing corner:

E-11 Found standard Kent Co. Mon. (Harrison) per witnesses from above LCRC as set by Thomas Chettleburgh in place of the 1/2" Iron Pipe he found. Said Iron Pipe checks with Kent Co. Wit. and Williams & Works information.

LCRC #3706		LCRC #7116	
Nail/tag 18" Oak	N24°E 12.30'	Nail/tag 20" Oak	N24°E 12.42'
Nail/tag 28" Oak	S35°E 27.38'	Nail/tag 30" Oak	S35°E 27.38'
Nail/tag 20" Beech	S01°W 11.57'	Nail/tag 16" Hickory	N55°W 63.07'
Nail/tag 18" Beech	N68°W 22.08'	Nail/tag 22" Oak	N70°E 22.80'
Nail/tag 13" Hickory	N55°W 63.07'		

The selected location is accepted by me and is generally accepted by professional surveyors as the best available evidence of the position of the original corner.

C. Description of monument for corner and accessories established to perpetuate locating the position of the corner:

E-11 Standard Kent County Monument

Nail & KC Remon. tag NW side	24" Stump	N24°E	12.47'
New Nail & KC Remon. tag NE side	30" Oak	S35°E	27.40'
Nail & KC Remon. tag NE side	18" Hickory	N55°W	63.07'
Nail & KC Remon. tag NW side	24" Stump	S10°W	11.57'
Nail & KC Remon. tag NE side	22" Stump	N68°E	22.08'
Set Nail & KC Remon. tag N. side	22" Oak	S75°E	43.53'



Signed by *Kirk Breitels*
Surveyor's Michigan License No. 30077

Date 3/1/96