

SURVEY & REMONUMENTATION

FEB 14 1997

KENT COUNTY REMONUMENTATION

LAND CORNER RECORDATION CERTIFICATE
Filing Requirement of Act 74, Mich. P.A. 1970

COMMISSION

For corners in
KENT COUNTY
(County)

Located In:	Corner Code #
T 6N R 10W	F-3
T R	
T R	
T R	
T R	
S T R	
S T R	
S T R	
S T R	

- 1. Public Land Survey
- 2. Property Controlling in Section
- 3. Miscellaneous Property in Sec.

4. Lot No. _____, Recorded Plat _____
5. Private Claims _____

STATE OF MICHIGAN
COUNTY OF KENT
RECEIVED FOR RECORD

96 MAR 20 AM 8:45

REG. OF DEEDS

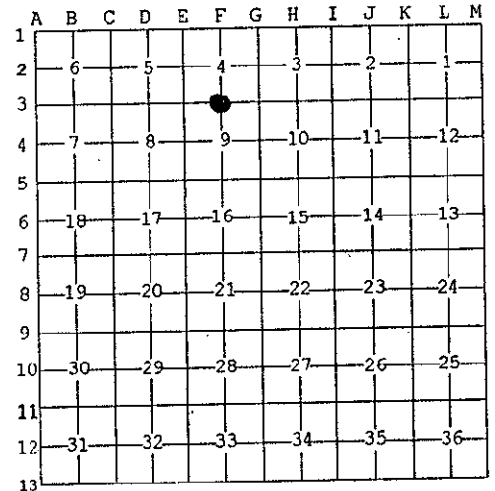
Lucy Standa

8961

Register of Deeds Stamp & File Number

I, Kirk Breitels, in a field survey on Feb. 5, 1996 do hereby state that under requirements of P.A. 74, Michigan P.A. of 1970, the corner points mentioned in lines 1 and 2 above were in conformance with regulations and rules therefore as required in the current manual of survey instructions of the United States Department of the Interior, Bureau of Land Management or by a decree of a Court of Law and/or that the corner points mentioned in lines 3, 4 and 5 above were in conformance with the rules of the Michigan Board of Land Surveyors or by a Decree of a Court of Law, established, re-established, monumented, recovered, found as expressed below:

NOTE: Not more than 2 corners, all in the same town and range, may be recorded on this certificate.



A. Description of original monument and accessories and/or subsequent restoration:

F-3	1831	GLO	Mullett	Set Post
		Kent Co. Wit.		Pointed Stone
	1974	LCRC #653	Spicer	Pointed Stone
	1974	LCRC #743	Bonnema	Pointed Stone
	1980	LCRC #1427	Merdzinski	Set Kent County Monument
	1994	LCRC #7119	Bueche	Kent County Monument

P.A. 345 1990 KENT COUNTY
PEER APPROVED 3/7/96
CHAIRMAN *Harry Huber*

The position of this corner was previously approved by the Kent County Remonumentation Peer Group, monumented by John A. Merdzinski on 10/20/80 and was recorded per LCRC #1427

B. Description of corner evidence found and/or method applied in restoring or reestablishing corner:
F-3 Found standard Kent Co. Mon. (Harrison) per witnesses from above LCRC as set by John A. Merdzinski in place of the Pointed Stone he found. Said Pointed Stone checks with Kent Co. Wit. and LCRC's #653 & #743.

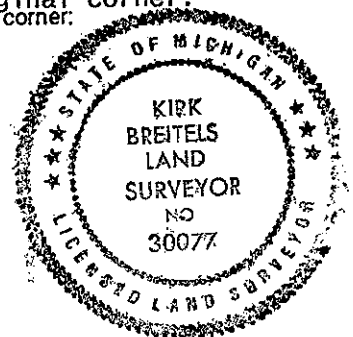
LCRC #1427 (Nail/tag)	LCRC #7119 (Nail/tag)
30" Oak East 27.82'	8" Oak N10°E 16.93'
24" Oak N50°W 22.05'	Tri. 12" Cherry S80°E 7.18'
14" Ash South 33.50'	28" Oak N90°E 27.91'
Group 6" Cherry S10°E 19.79'	10" Oak N10°E 17.00'
16" Ash N40°E 30.14'	24" Oak N50°W 22.22'
	16" Ash S00°E 33.48'
	18" Ash N40°E 30.18'

The selected location is accepted by me and is generally accepted by professional surveyors as the best available evidence of the position of the original corner.

C. Description of monument for corner and accessories established to perpetuate locating the position of the corner:

F-3 Standard Kent County Monument

Nail & KC Remon. tag N. side	Tri. 12" Cherry	S80°E	7.18'
Nail & KC Remon. tag N. side	30" Oak	N90°E	27.91'
Nail & KC Remon. tag E. side	10" Oak	N10°E	17.00'
Nail & KC Remon. tag E. side	28" Oak	N50°W	22.25'
Nail & KC Remon. tag W. side	18" Ash	S00°W	33.48'
Nail & KC Remon. tag E. side	18" Cherry	N40°E	30.18'



Signed by *Kirk Breitels*
Surveyor's Michigan License No. 30077

Date 3/1/96