

SURVEY & REMONUMENTATION

FEB 14 1997

COMMISSION KENT COUNTY REMONUMENTATION

LAND CORNER RECORDATION CERTIFICATE
Filing Requirement of Act 74, Mich. P.A. 1970

For corners in
KENT COUNTY
(County)

Located In:	Corner Code #
T6N R 10W	F-5
T R	
T R	
T R	
T R	
S T R	
S T R	
S T R	
S T R	

- Public Land Survey
- Property Controlling in Section
- Miscellaneous Property in Sec.

STATE OF MICHIGAN
COUNTY OF KENT
RECEIVED FOR RECORD

95 MAR 20 AM 8:46

REG. OF DEEDS

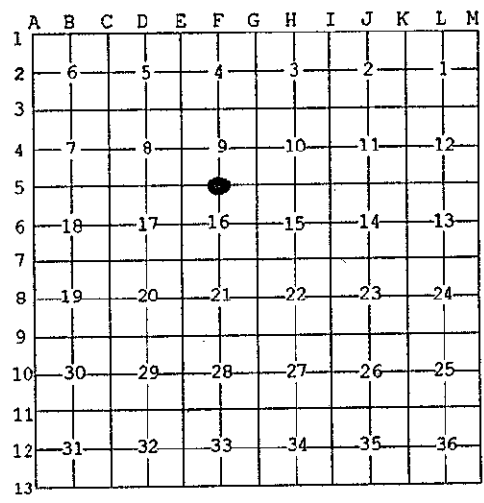
W. J. Bond

8962

Register of Deeds Stamp & File Number

4. Lot No. _____, Recorded Plat _____
5. Private Claims _____

I, Kirk Breitels, in a field survey on Feb. 9, 1996 do hereby state that under requirements of P.A. 74, Michigan P.A. of 1970, the corner points mentioned in lines 1 and 2 above were in conformance with regulations and rules therefore as required in the current manual of survey instructions of the United States Department of the Interior, Bureau of Land Management or by a decree of a Court of Law and/or that the corner points mentioned in lines 3, 4 and 5 above were in conformance with the rules of the Michigan Board of Land Surveyors or by a Decree of a Court of Law; established, re-established, monumented, recovered, found as expressed below:



NOTE: Not more than 2 corners, all in the same town and range, may be recorded on this certificate.

- A. Description of original monument and accessories and/or subsequent restoration:
- | | | | | | |
|-----|------|---------------|------------|--------------------------------------|---|
| F-5 | 1831 | GLO | Mullett | Set Post | P.A. 345 1990 KENT COUNTY
PEER APPROVED 3/7/95
CHAIRMAN <i>Stan Huber</i> |
| | 1959 | Kent Co. Wit. | | Mon. Box | |
| | 1973 | LCRC #549 | VanKooten | "T" Iron in Mon. Box | |
| | 1974 | LCRC #653 | Spicer | "T" Iron in Mon. Box | |
| | 1982 | LCRC #2954 | Merdzinski | Set Kent County Monument in Mon. Box | |
| | 1994 | LCRC #7120 | Bueche | Kent County Monument in Mon. Box | |

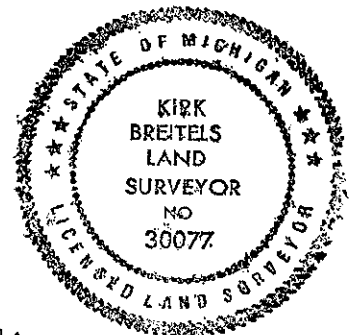
The position of this corner was previously approved by the Kent County Remonumentation Peer Group, monumented by John A. Merdzinski on 3/31/82 and was recorded per LCRC #2954

- B. Description of corner evidence found and/or method applied in restoring or reestablishing corner:
- F-5 Found standard Kent Co. Mon. (Harrison) per witnesses from above LCRC as set by John A. Merdzinski in place of the "T" Iron he found inside a Mon. Box. Said "T" Iron checks with Kent Co. Wit. and LCRC's #549 & #653.

<u>LCRC #2954</u>	<u>LCRC #7120</u>	
Nail/tag back curb joint	N85°E 33.41'	SW cor. CB N55°W 60.72'
Nail/tag P. Pole	N40°W 53.35'	NE cor. CB S30°E 36.42'
Nail/tag P. Pole	S45°W 65.80'	Nail/tag back curb N85°E 33.60'
Nail/tag 14" Walnut	N50°W 95.95'	Nail/tag P. Pole N40°W 53.31'
Top C/L hydrant	S05°E 40.67'	Nail/tag P. Pole S45°W 65.73'

The selected location is accepted by me and is generally accepted by professional surveyors as the best available evidence of the position of the original corner.

- C. Description of monument for corner and accessories established to perpetuate locating the position of the corner:
- F-5 Standard Kent County Monument in Mon. Box
- | | | |
|--|-------|--------|
| NW corner catch basin grate | N55°W | 60.70' |
| NE corner catch basin grate | S30°E | 36.42' |
| Nail & KC Remon. tag E. side P. Pole | N40°W | 53.29' |
| Nail & KC Remon. tag W. side P. Pole | S45°W | 65.73' |
| Top C/L fire hydrant | S05°E | 40.63' |
| "X" cut top curb E. end traffic island | N85°E | 33.17' |



Signed by *Kirk Breitels*
Surveyor's Michigan License No. 30077

Date 3/1/96