

**SURVEY & REMONUMENTATION**

**KENT COUNTY REMONUMENTATION**

FEB 14 1997

**LAND CORNER RECORDATION CERTIFICATE**  
Filing Requirement of Act 74, Mich. P.A. 1970

For corners in **COMMISSION**  
**KENT COUNTY**  
(County)

Located In:	Corner Code #
1. Public Land Survey	T6N R 10W F-9
2. Property Controlling in Section	S T R
3. Miscellaneous Property in Sec.	S T R

STATE OF MICHIGAN  
COUNTY OF KENT  
RECEIVED FOR RECORD  
96 MAR 20 AM 8:46  
REG. OF DEEDS  
*David Stand*

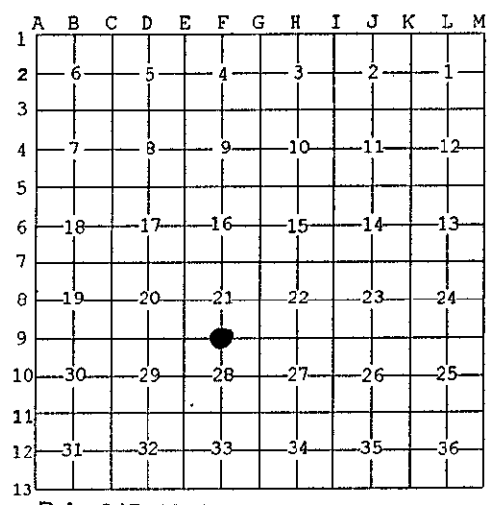
8964

Register of Deeds Stamp & File Number

4. Lot No. \_\_\_\_\_, Recorded Plat \_\_\_\_\_  
5. Private Claims \_\_\_\_\_

I, Kirk Breitels, in a field survey on Feb. 5, 1996 do hereby state that under requirements of P.A. 74, Michigan P.A. of 1970, the corner points mentioned in lines 1 and 2 above were in conformance with regulations and rules therefore as required in the current manual of survey instructions of the United States Department of the Interior, Bureau of Land Management or by a decree of a Court of Law and/or that the corner points mentioned in lines 3, 4 and 5 above were in conformance with the rules of the Michigan Board of Land Surveyors or by a Decree of a Court of Law; established, re-established, monumented, recovered, found as expressed below:

NOTE: Not more than 2 corners, all in the same town and range, may be recorded on this certificate.



A. Description of original monument and accessories and/or subsequent restoration:

F-9	1831	GLO	Mullett	Set Post
	1972	LCRC #785	Bonnema	"T" Iron
	1982	LCRC #2736	Merdzinski	Set Kent County Monument
	1992	LCRC #6715	Brintnall	Kent County Monument
	1994	LCRC #7122	Bueche	Kent County Monument

P.A. 345 1990 KENT COUNTY  
PEER APPROVED 3/7/96  
CHAIRMAN *Harry Huber*

The position of this corner was previously approved by the Kent County Remonumentation Peer Group, monumented by John A Merdzinski on 2/3/82 and was recorded per LCRC #2736

B. Description of corner evidence found and/or method applied in restoring or reestablishing corner:

F-9 Found standard Kent Co. Mon. (Harrison) per witnesses from above LCRC as set by John A. Merdzinski in place of the Concrete Monument he found. Said Concrete Monument checks with LCRC #785 and information from MSDH.

LCRC #2736	LCRC #7122
Nail/tag top fence post South 34.15'	Nail/tag top wood fence post South 34.15'
Nail/tag 10" Elm S65°E 55.67'	Nail/tag 12" Elm S65°E 55.67'
NW cor. whistle post N55°E 43.79'	Nail/tag 8" tri. Elm N30°W 15.41'
NW cor. RR sign post N75°E 55.55'	Nail/tag RR tie N30°E 52.10'

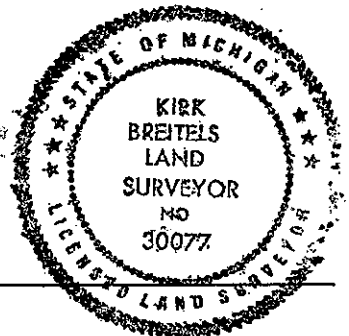
The selected location is accepted by me and is generally accepted by professional surveyors as the best available evidence of the position of the original corner.

C. Description of monument for corner and accessories established to perpetuate locating the position of the corner:

F-9 Standard Kent County Monument

Nail & KC Remon. tag top C/L 8" wood fence post	South	34.27'	(leaning)
Nail in NE side 16" Elm	S65°E	55.78'	
Nail & KC Remon. tag S. side 8" Triple Elm	N30°W	15.41'	
Nail & KC Remon. tag in RR tie	N30°E	52.10'	
PK Nail top wood post	S15°W	34.00'	

Corner is in C/L ± of 12' abandoned roadway E-W  
Tree and fence line to South is 3' ± West



Signed by *Kirk Breitels*  
Surveyor's Michigan License No. 30077

Date 3/1/96