

SURVEY & REMONUMENTATION

FEB 14 1997

KENT COUNTY REMONUMENTATION

COMMISSION

LAND CORNER RECORDATION CERTIFICATE
Filing Requirement of Act 74, Mich. P.A. 1970

REG. OF DEEDS

W. J. Bond

96 MAR 20 AM 8:46

STATE OF MICHIGAN
COUNTY OF KENT
RECEIVED FOR RECORD

For corners in
KENT COUNTY
(County)

Located in:	Corner Code #
1. Public Land Survey T 6N R 10W	G-3
T R	_____
T R	_____
T R	_____
2. Property Controlling S T R	_____
in Section	S T R
3. Miscellaneous	S T R
Property in Sec.	S T R

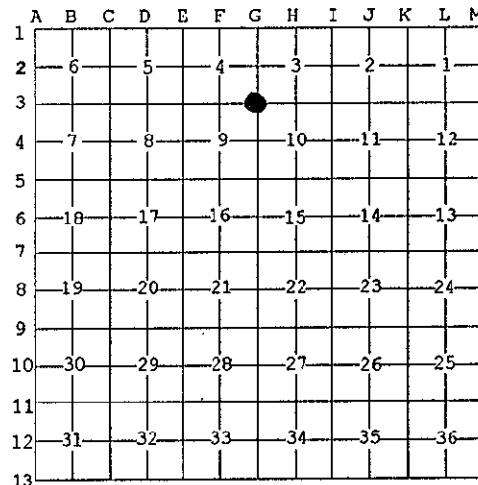
8968

Register of Deeds Stamp & File Number

4. Lot No. _____, Recorded Plat _____
5. Private Claims _____

I, Kirk Breitels, in a field survey on Feb. 5, 1996 do hereby state that under requirements of P.A. 74, Michigan P.A. of 1970, the corner points mentioned in lines 1 and 2 above were in conformance with regulations and rules therefore as required in the current manual of survey instructions of the United States Department of the Interior, Bureau of Land Management or by a decree of a Court of Law and /or that the corner points mentioned in lines 3, 4 and 5 above were in conformance with the rules of the Michigan Board of Land Surveyors or by a Decree of a Court of Law; established, re-established, monumented, recovered, found as expressed below:

NOTE: Not more than 2 corners, all in the same town and range, may be recorded on this certificate.



A. Description of original monument and accessories and/or subsequent restoration:

G-3	1831	GLO	Mullett	Set Post
	1939	Kent Co. Wit.		2" Iron
	1973	LCRC #387	Spicer	1 1/4" Iron
	1981	LCRC #1891	Merdzinski	Set Kent County Monument
	1994	LCRC #7126	Bueche	Kent County Monument

P.A. 345 1990 KENT COUNTY

PEER APPROVED 3/7/96
CHAIRMAN *Henry Stukes*

The position of this corner was previously approved by the Kent County Remonumentation Peer Group, monumented by John A. Merdzinski on 6/19/81 and was recorded per LCRC #1891

B. Description of corner evidence found and/or method applied in restoring or reestablishing corner:

G-3 Found standard Kent Co. Mon. (Harrison) per witnesses from above LCRC as set by John A. Merdzinski in place of the 1" Iron with 1 1/4" Bolt he found. Said Iron and Bolt checks with Kent Co. Wit. and LCRC #387
LCRC #1891 & #7126

Nail & KC Remon. tag SW side 14" Elm	S40°E	39.04'	Nail & KC Remon. tag
Nail & KC Remon. tag N. side 20" Locust	S80°E	38.83'	E. side Tw. 5" Elm
Nail & KC Remon. tag NW side T & G Pole	N45°E	36.53'	S25°W 69.55'
Nail & KC Remon. tag SW side G. Pole	N45°W	31.90'	
Nail & KC Remon. tag E. side 16" Locust	S45°W	31.45'	

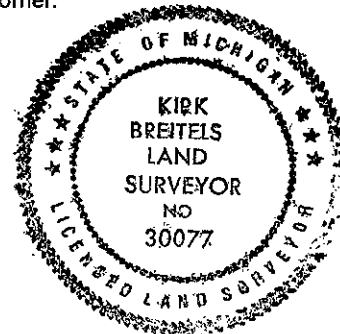
The selected location is accepted by me and is generally accepted by professional surveyors as the best available evidence of the position of the original corner.

C. Description of monument for corner and accessories established to perpetuate locating the position of the corner:

G-3 Standard Kent County Monument

Nail & KC Remon. tag SW side 14" Elm	S40°E	39.10'
Nail & KC Remon. tag N. side 20" Locust	S80°E	38.87'
Nail & KC Remon. tag NW side T & G Pole	N45°E	36.53'
Nail & KC Remon. tag SW side G. Pole	N45°W	31.93'
Nail & KC Remon. tag E. side 16" Locust	S45°W	31.45'
Nail & KC Remon. tag E. side Tw. 5" Elm	S25°W	69.60'

C/L of road is 3'± West and on tree row West



Signed by *Kirk Breitels*
Surveyor's Michigan License No. 30077

Date 3/1/96