

SURVEY & REMONUMENTATION

KENT COUNTY REMONUMENTATION

FEB 14 1997

LAND CORNER RECORDATION CERTIFICATE
Filing Requirement of Act 74, Mich. P.A. 1970

COMMISSION

STATE OF MICHIGAN
COUNTY OF KENT
RECEIVED FOR RECORD
96 MAR 20 AM 8:46
REG. OF DEEDS
W. J. Bond

For corners in
KENT COUNTY
(County)

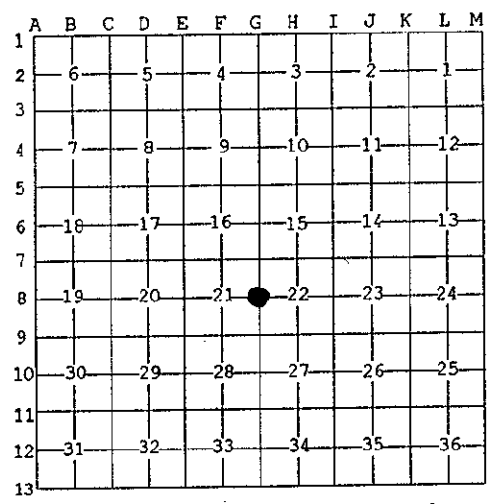
Located In:	Corner Code #
T 6N R 10W	G-8
T R	
T R	
T R	
T R	
S T R	
S T R	
S T R	
S T R	

- 1. Public Land Survey
- 2. Property Controlling in Section
- 3. Miscellaneous Property in Sec.

8970
Register of Deeds Stamp & File Number

- 4. Lot No. _____, Recorded Plat _____
- 5. Private Claims _____

I, Kirk Breitels, in a field survey on Feb. 20, 1996 do hereby state that under requirements of P.A. 74, Michigan P.A. of 1970, the corner points mentioned in lines 1 and 2 above were in conformance with regulations and rules therefore as required in the current manual of survey instructions of the United States Department of the Interior, Bureau of Land Management or by a decree of a Court of Law and /or that the corner points mentioned in lines 3, 4 and 5 above were in conformance with the rules of the Michigan Board of Land Surveyors or by a Decree of a Court of Law; established, re-established, monumented, recovered, found as expressed below:



NOTE: Not more than 2 corners, all in the same town and range, may be recorded on this certificate.

- A. Description of original monument and accessories and/or subsequent restoration:
- | | | | | |
|-----|------|--------------------------|--------------|------------------------------|
| G-8 | 1831 | GLO | Mullett | Set Post |
| | | Kent Co. Wit. | | Concrete Monument |
| | | 1919-52 Williams & Works | | Fence Post-Concrete Monument |
| | | 1984 LCRC #3708 | Chettleburgh | Set Kent County Monument |
| | | 1994 LCRC #7131 | Bueche | Kent County Monument |

P.A. 345 1990 KENT COUNTY
PEER APPROVED 3/7/96
CHAIRMAN *Harry Heber*

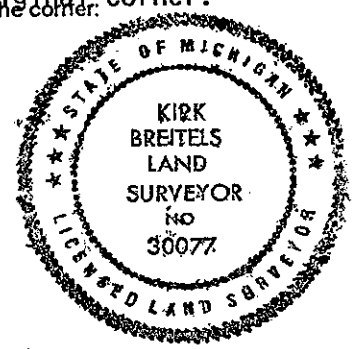
The position of this corner was previously approved by the Kent County Remonumentation Peer Group, monumented by Thomas Chettleburgh on 12/28/84 and recorded per LCRC #3708

- B. Description of corner evidence found and/or method applied in restoring or reestablishing corner:
- G-8 Found standard Kent Co. Mon. (Harrison) per witnesses from above LCRC as set by Thomas Chettleburgh in place of the Concrete Monument he found. Said Concrete Monument checks with Kent Co. Wit. and Williams & Works information.
LCRC #3708 & #7131

Nail & KC Remon. tag E. side 36"	Oak	N02°E	37.10'	Nail & KC Remon. tag
Nail & KC Remon. tag SE side 12"	Cherry	N49°E	6.78'	W. side 26" Maple
Nail & KC Remon. tag E. side 16"	Oak	S19°E	35.45'	N06°W 21.19'
Nail & KC Remon. tag W. side 16"	Oak	S09°E	13.22'	
Nail & KC Remon. tag S. side 14"	Maple	S85°W	18.25'	

The selected location is accepted by me and is generally accepted by professional surveyors as the best available evidence of the position of the original corner.

- C. Description of monument for corner and accessories established to perpetuate locating the position of the corner.
- G-8 Standard Kent County Monument
- | | | | |
|----------------------------------|--------|-------|--------|
| Nail & KC Remon. tag E. side 36" | Oak | N02°E | 37.14' |
| Nail & KC Remon. tag SE side 14" | Cherry | N49°E | 6.81' |
| Nail & KC Remon. tag E. side 18" | Oak | S19°E | 35.45' |
| Nail & KC Remon. tag W. side 18" | Oak | S09°E | 13.22' |
| Nail & KC Remon. tag S. side 16" | Maple | S85°W | 18.25' |
| Nail & KC Remon. tag W. side 28" | Maple | N06°W | 21.22' |
- Remains of fence to West and North



Signed by *Kirk Breitels*
Surveyor's Michigan License No. 30077

Date 3/1/96