

SURVEY & REMONUMENTATION

FEB 14 1997

COMMISSION

KENT COUNTY REMONUMENTATION

LAND CORNER RECORDATION CERTIFICATE
Filing Requirement of Act 74, Mich. P.A. 1970

For corners in
KENT COUNTY
(County)

Located In:	Corner Code #
T 6N R 10W	G-9
T R	
T R	
T R	
T R	
S T R	
S T R	
S T R	
S T R	

- 1. Public Land Survey
- 2. Property Controlling in Section
- 3. Miscellaneous Property in Sec.

4. Lot No. _____, Recorded Plat _____
5. Private Claims _____

I, Kirk Breitels, in a field survey on Feb. 27, 1996 do hereby state that under requirements of P.A. 74, Michigan P.A. of 1970, the corner points mentioned in lines 1 and 2 above were in conformance with regulations and rules therefore as required in the current manual of survey instructions of the United States Department of the Interior, Bureau of Land Management or by a decree of a Court of Law and/or that the corner points mentioned in lines 3, 4 and 5 above were in conformance with the rules of the Michigan Board of Land Surveyors or by a Decree of a Court of Law; established, re-established, monumented, recovered, found as expressed below.

NOTE: Not more than 2 corners, all in the same town and range, may be recorded on this certificate.

	A	B	C	D	E	F	G	H	I	J	K	L	N
1													
2	6		5		4		3		2		1		
3													
4	7		8		9		10		11		12		
5													
6	10		17		16		15		14		13		
7													
8	19		20		21		22		23		24		
9													
10	30		29		28		27		26		25		
11													
12	31		32		33		34		35		36		
13													

STATE OF MICHIGAN
COUNTY OF KENT
RECEIVED FOR RECORD
96 MAR 20 AM 8:46
REG. OF DEEDS
Lucy Stouffer

8971

Register of Deeds Stamp & File Number

A. Description of original monument and accessories and/or subsequent restoration:

G-9	1831	GLO	Mullett	Set Post
	1895	Williams & Works		Pointed Stone
	1959	Kent Co. Wit.		Stone & Iron
	1984	LCRC #3709	Chettleburgh	Set Kent County Monument
	1992	LCRC #6717	Brintnall	Kent County Monument
	1994	LCRC #7132	Bueche	Kent County Monument

P.A. 345 1990 KENT COUNTY
PEER APPROVED 3/7/96
CHAIRMAN *Harry Huber*

The position of this corner was previously approved by the Kent County Remonumentation Peer Group, monumented by Thomas Chettleburgh on 12/20/83 and recorded per LCRC #3709

B. Description of corner evidence found and/or method applied in restoring or reestablishing corner:

G-9 Found standard Kent Co. Mon. (Harrison) per witnesses from above LCRC as set by Thomas Chettleburgh in place of the 3/4" Iron Pipe he found. Said Iron Pipe checks with Williams & Works information and Kent Co. Wit.

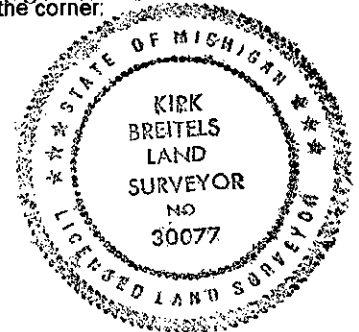
<u>LCRC #3709</u>	<u>LCRC #6717</u>	<u>LCRC #7132</u>
Nail 48" Maple N03°E 37.13'	same witnesses ±	same witnesses ±
Nail 17" Oak S86°E 28.23'	as LCRC #3709	as LCRC #3709
Nail 14" Maple S43°W 29.91'		
Nail 13" Cherry S90°W 50.41'		
Nail 11" Maple N03°W 5.85'		

The selected location is accepted by me and is generally accepted by professional surveyors as the best available evidence of the position of the original corner.

C. Description of monument for corner and accessories established to perpetuate locating the position of the corner:

G-9 Standard Kent County Monument

New Nail & KC Remon. tag E. side	48" Maple	N03°E	37.10'
Nail & KC Remon. tag S. side	20" Oak	S86°E	28.28'
Nail & KC Remon. tag NW side	20" Maple	S43°W	30.00'
Nail & KC Remon. tag S. side	18" Cherry	S90°W	50.45'
Nail & KC Remon. tag E. side	12" Maple	N03°W	5.82'
C/L 2 track NW'ly - SE'ly is South 18'±			



Signed by *Kirk Breitels*
Surveyor's Michigan License No. 30077

Date 3/1/96