

SURVEY & REMONUMENTATION

FEB 14 1997

KENT COUNTY REMONUMENTATION

COMMISSION LAND CORNER RECORDATION CERTIFICATE
Filing Requirement of Act 74, Mich. P.A. 1970

For corners in
KENT COUNTY

Located In: Corner Code #

1. Public Land Survey	T <u>6N</u> R <u>10W</u>	<u>I-2</u>
	T _____ R _____	_____
	T _____ R _____	_____
	T _____ R _____	_____
2. Property Controlling in Section	S _____ T _____ R _____	_____
	S _____ T _____ R _____	_____
3. Miscellaneous Property in Sec.	S _____ T _____ R _____	_____
	S _____ T _____ R _____	_____

STATE OF MICHIGAN
 COUNTY OF KENT
 RECEIVED FOR RECORD
 96 MAR 20 AM 8:45
 REG. OF DEEDS
W. J. [Signature]

8978
Register of Deeds Stamp & File Number

4. Lot No. _____, Recorded Plat _____
5. Private Claims _____

Kirk Breitels, in a field survey on Feb. 16, 1996 do hereby state that under requirements of P.A. 74, Michigan P.A. of 1970, the corner points mentioned in lines 1 and 2 above were in conformance with regulations and rules therefore as required in the current manual of survey instructions of the United States Department of the Interior, Bureau of Land Management or by a decree of a Court of Law and/or that the corner points mentioned in lines 3, 4 and 5 above were in conformance with the rules of the Michigan Board of Land Surveyors or by a Decree of a Court of Law; established, re-established, monumented, recovered, found as expressed below:

NOTE: Not more than 2 corners, all in the same town and range, may be recorded on this certificate.

A	B	C	D	E	F	G	H	I	J	K	L	M
1												
2	6		5		4		3	●	2		1	
3												
4	7		8		9		10		11		12	
5												
6	18		17		16		15		14		13	
7												
8	19		20		21		22		23		24	
9												
10	30		29		28		27		26		25	
11												
12	31		32		33		34		35		36	
13												

A. Description of original monument and accessories and/or subsequent restoration:

I-2	1831	GLO	Mullett	Set Post
	1971	LCRC #47	Chambers	1" Iron
	1972	LCRC #405	Spicer	1" Iron
	1981	LCRC #1594	Merdzinski	Set Kent County Monument
	1991	LCRC #6070	Unema	Kent County Monument

P.A. 345 1990 KENT COUNTY

PEER APPROVED 3/1/96
CHAIRMAN *[Signature]*

The position of this corner was previously approved by the Kent County Remonumentation Peer Group, monumented by John A. Merdzinski on 1/26/81 and was recorded per LCRC #1594

B. Description of corner evidence found and/or method applied in restoring or reestablishing corner:

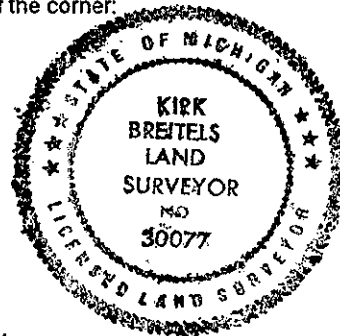
I-2 Found standard Kent Co. Mon. (Harrison) per witnesses from above LCRC as set by John A. Merdzinski in place of the Concrete Plat Monument he found. Said Concrete Monument checks with LCRC's #47, #405.

LCRC #1594 (Nail/tag in trees)		LCRC #6070	
24" Oak North	22.86'	26" Oak East	19.18'
16" Sassafras	N70°W 8.98'	Nail/tag 28" Oak	N00°W 22.83'
12" Sassafras	West 25.89'	Nail/tag 30" Oak	N90°E 19.60'
14" Sassafras	N10°W 4.15'	Nail/tag 6" Cedar	N77°W 42.48'
NE cor. hse. fnd.	S30°W 84.81'	NE cor. hse. fnd.	S22°W 84.77'

The selected location is accepted by me and is generally accepted by professional surveyors as the best available evidence of the position of the original corner.

C. Description of monument for corner and accessories established to perpetuate locating the position of the corner:

I-2 Standard Kent County Monument			
New Nail & KC Remon. tag W. side	32" Oak	N00°W	22.80'
New Nail & KC Remon. tag S. side	34" Oak	N90°E	19.63'
Nail & KC Remon. tag N. side	6" Cedar	N77°W	42.48'
NE corner house foundation		S22°W	84.83'
Face of NE post of jungle gym		S55°W	18.53'
Tree Row and remains of fence to E-W & N			



Signed by *[Signature]*
Surveyor's Michigan License No. 30077

Date 3/1/96