

SURVEY & REMONUMENTATION

FEB 14 1997

COMMISSION KENT COUNTY REMONUMENTATION

LAND CORNER RECORDATION CERTIFICATE
Filing Requirement of Act 74, Mich. P.A. 1970

For corners in
KENT COUNTY
(County)

Located In:	Corner Code #
T 6N R 10W	J-3
T _____ R _____	_____
T _____ R _____	_____
T _____ R _____	_____
T _____ R _____	_____
S _____ T _____ R _____	_____
S _____ T _____ R _____	_____
S _____ T _____ R _____	_____
S _____ T _____ R _____	_____

- 1. Public Land Survey
- 2. Property Controlling in Section
- 3. Miscellaneous Property in Sec.

STATE OF MICHIGAN
COUNTY OF KENT
RECEIVED FOR RECORD

96 JUN -7 AM 8:27

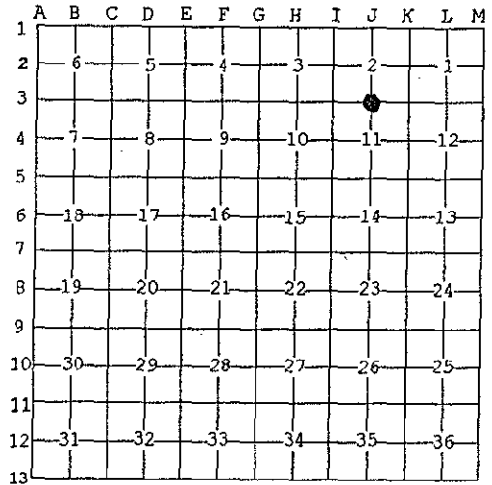
REG. OF DEEDS

9162

Register of Deeds Stamp & File Number

4. Lot No. _____, Recorded Plat _____
5. Private Claims _____

I, Kirk Breitels, in a field survey on Apr. 5, 19 96 do hereby state that under requirements of P.A. 74, Michigan P.A. of 1970, the corner points mentioned in lines 1 and 2 above were in conformance with regulations and rules therefore as required in the current manual of survey instructions of the United States Department of the Interior, Bureau of Land Management or by a decree of a Court of Law and/or that the corner points mentioned in lines 3, 4 and 5 above were in conformance with the rules of the Michigan Board of Land Surveyors or by a Decree of a Court of Law; established, re-established, monumented, recovered, found as expressed below:



NOTE: Not more than 2 corners, all in the same town and range, may be recorded on this certificate.

A. Description of original monument and accessories and/or subsequent restoration:

J-3	1831	GLO	Mullett	Set Post
	1965	Kent Co. Wit.		"T" Iron
	1973	LCRC #541	Spicer	"T" Iron
	1981	LCRC #1599	Merdzinski	Set Kent County Monument
	1987	LCRC #4529	Bueche	Reset Kent County Monument
	1991	LCRC #6082	Unema	Kent County Monument

P.A. 345 1990 KENT COUNTY
PEER APPROVED 5/30/96
CHAIRMAN Harry Huber

The position of this corner was previously approved by the Kent County Remonumentation Peer Group, monumented by John A. Merdzinski on 2/2/81 and was recorded per LCRC #1599

B. Description of corner evidence found and/or method applied in restoring or reestablishing corner:

J-3 Found standard Kent Co. Mon. (Harrison) per witnesses from above LCRC as set by John A. Merdzinski in place of the "T" Iron he found. Said "T" Iron checks with Kent Co. Wit. and LCRC #541

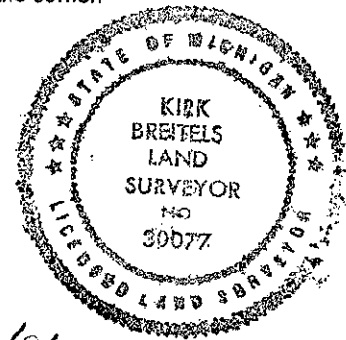
<u>LCRC #1599</u>	<u>LCRC #6082</u>
18" Cherry S25°E 43.03'	Nail/tag 20" W. Cherry S26°E 43.07'
P & T Pole S05°W 54.38'	Nail/tag P & T Pole S04°W 54.35'
14" Oak S85°W 14.24'	16" Oak N35°W 43.38'
12" Oak N70°E 6.64'	16" Oak N70°E 40.32'
C/L Bolt Dr. is S. 12'±	Nail/tag P. Pole N07°W 29.04'
	Nail/tag 8" Hickory S60°W 63.86'

The selected location is accepted by me and is generally accepted by professional surveyors as the best available evidence of the position of the original corner.

C. Description of monument for corner and accessories established to perpetuate locating the position of the corner:

J-3 Standard Kent County Monument

Nail & KC Remon. tag E. side 20" Stump	S26°E 43.09'
Nail & KC Remon. tag E. side P & T Pole	S04°W 54.35'
Nail & KC Remon. tag S. side 20" Oak	N70°E 40.29'
Nail & KC Remon. tag W. side P. Pole	N07°W 29.09'
Nail & KC Remon. tag NW side 10" Hickory	S60°W 63.90'
C/L grav. dr. to #8383 is 6'± West	
C/L Bolt Dr. is 12'± South	



Signed by Kirk Breitels
Surveyor's Michigan License No. 30077

Date 4/19/96