

**SURVEY & REMONUMENTATION**

**KENT COUNTY REMONUMENTATION**

FEB 14 1997

**LAND CORNER RECORDATION CERTIFICATE**  
Filing Requirement of Act 74, Mich. P.A. 1970

**COMMISSION**

For corners in  
**KENT COUNTY**  
(County)

Located In:	Corner Code #
T 6N R 10W	K-5
T R	
T R	
T R	
T R	
S T R	
S T R	
S T R	
S T R	

- Public Land Survey
- Property Controlling in Section
- Miscellaneous Property in Sec.

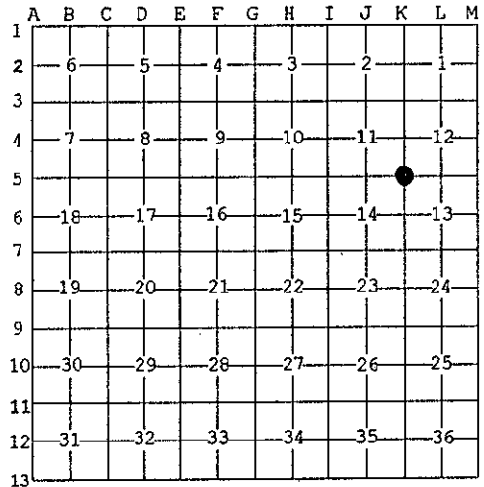
STATE OF MICHIGAN  
COUNTY OF KENT  
RECEIVED FOR RECORD  
96 MAR 20 AM 8:47  
REG. OF DEEDS  
*[Signature]*

8991

Register of Deeds Stamp & File Number

- Lot No. \_\_\_\_\_, Recorded Plat \_\_\_\_\_
- Private Claims \_\_\_\_\_

I, Kirk Breitels, in a field survey on Feb. 12, 1996 do hereby state that under requirements of P.A. 74, Michigan P.A. of 1970, the corner points mentioned in lines 1 and 2 above were in conformance with regulations and rules therefore as required in the current manual of survey instructions of the United States Department of the Interior, Bureau of Land Management or by a decree of a Court of Law and/or that the corner points mentioned in lines 3, 4 and 5 above were in conformance with the rules of the Michigan Board of Land Surveyors or by a Decree of a Court of Law; established, re-established, monumented, recovered, found as expressed below:



NOTE: Not more than 2 corners, all in the same town and range, may be recorded on this certificate.

A. Description of original monument and accessories and/or subsequent restoration:

K-5	1831	GLO	Mullett	Set Post
	1960	Kent Co. Wit.		Iron
	1978	LCRC #1110	Bonnema	3/4" Rerod
	1982	LCRC #2748	Merdzinski	Set Kent County Monument
	1991	LCRC #6096	Unema	Kent County Monument

P.A. 345 1990 KENT COUNTY  
PEER APPROVED 3/7/96  
CHAIRMAN *[Signature]*

The position of this corner was previously approved by the Kent County Remonumentation Peer Group, monumented by John A. Merdzinski on 2/22/82 and was recorded per LCRC #2748

B. Description of corner evidence found and/or method applied in restoring or reestablishing corner:  
K-5 Found standard Kent Co. Mon. (Harrison) per witnesses from above LCRC as set by John A. Merdzinski in place of the 3/4" Rerod inside a 1" Pipe he found. Both Irons check with Kent Co. Wit. and LCRC #1110.

LCRC #2748	LCRC #6096
Nail/tag Fence Post South 33.00'	Nail/tag 14" Oak S30°E 113.83'
Nail/tag 18" Oak North 57.48'	Nail/tag fence post S00°E 33.02'
Nail/tag 24" Oak N15°E 46.32'	Nail/tag 16" Oak N72°E 86.05'
Nail/tag 14" Oak N70°E 86.10'	Nail/tag 28" Oak N30°E 46.29'
	Nail/tag 20" Oak N05°E 57.62'

The selected location is accepted by me and is generally accepted by professional surveyors as the best available evidence of the position of the original corner.

C. Description of monument for corner and accessories established to perpetuate locating the position of the corner:

K-5 Standard Kent County Monument

Nail & KC Remon. tag SW side 14" Oak	S30°E	113.83'
Nail & KC Remon. tag E. side fence post	S00°E	33.05'
Nail & KC Remon. tag S. side 18" Oak	N72°E	86.10'
Nail & KC Remon. tag NW side 30" Oak	N30°E	46.29'
New Nail & KC Remon. tag E. side 24" Oak	N05°E	57.66'

C/L B.T. is 1'± South  
Cor. on fence line South  
C/L tree row North is 6'± West



Signed by *[Signature]*  
Surveyor's Michigan License No. 30077

Date 3/1/96