

SURVEY & REMONUMENTATION

FEB 14 1997

KENT COUNTY REMONUMENTATION

COMMISSION

LAND CORNER RECORDATION CERTIFICATE
Filing Requirement of Act 74, Mich. P.A. 1970

For corners in
KENT COUNTY

(County)

Located In:

Corner Code #

1. Public Land Survey

T 6N R 10W M-3
T 6N R 9W A-3

2. Property Controlling in Section

S T R

3. Miscellaneous Property in Sec.

S T R
S T R

4. Lot No. _____, Recorded Plat _____
5. Private Claims _____

I, Kirk Breitels, in a field survey on Feb. 22, 19 96 do hereby state that under requirements of P.A. 74, Michigan P.A. of 1970, the corner points mentioned in lines 1 and 2 above were in conformance with regulations and rules therefore as required in the current manual of survey instructions of the United States Department of the Interior, Bureau of Land Management or by a decree of a Court of Law and for that the corner points mentioned in lines 3, 4 and 5 above were in conformance with the rules of the Michigan Board of Land Surveyors or by a Decree of a Court of Law; established, re-established, monumented, recovered, found as expressed below:

NOTE: Not more than 2 corners, all in the same town and range, may be recorded on this certificate.

STATE OF MICHIGAN
COUNTY OF KENT
RECEIVED FOR RECORD

96 MAR 20 AM 8:47

REG. OF DEEDS

David J. Bond

9002
Register of Deeds Stamp & File Number

	A	B	C	D	E	F	G	H	I	J	K	L	M
1													
2	6	5	4	3	2	1							
3													
4	7	8	9	10	11	12							
5													
6	18	17	16	15	14	13							
7													
8	19	20	21	22	23	24							
9													
10	30	29	28	27	26	25							
11													
12	31	32	33	34	35	36							
13													

A. Description of original monument and accessories and/or subsequent restoration:

M-3	1831	GLO	Mullett	Set Post
	1971	LCRC #46	Chambers	Iron
	1977	LCRC #1015	McCombs	"T" Iron
	1981	LCRC #1604	Merdzinski	Set Kent County Monument
	1991	LCRC #6060	Unema	Kent County Monument

P.A. 345 1990 KENT COUNTY

PEER APPROVED 3/7/96
CHAIRMAN *Harry Huber*

The position of this corner was previously approved by the Kent County Remonumentation Peer Group, monumented by John A. Merdzinski on 1/27/81 and was recorded per LCRC #1604

B. Description of corner evidence found and/or method applied in restoring or reestablishing corner:

M-3 Found standard Kent Co. Mon. (Harrison) per witnesses from above LCRC as set by John A. Merdzinski in place of the "T" Iron he found. Said "T" Iron checks with LCRC's #46 and #1015.

LCRC #1604 (Nail/tag in trees)

LCRC #6060

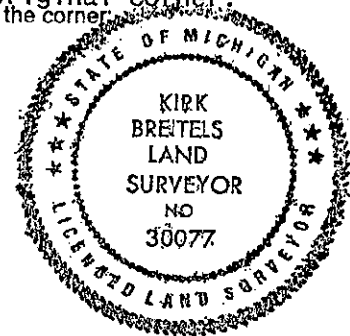
32" Oak North 94.53'	18" Oak N20°W 139.77'	Nail/tag 34" Oak	N04°E 94.46'
Face wood fence post	South 6.09'	Nail/tag 24" Oak	N19°W 152.14'
SE cor. gar. fnd.	N50°W 271.10'	Nail/tag 8" Locust	East 23.48'
NE cor. hse. fnd.	S70°W 229.73'	Nail/tag 6" Tri. Locust	S19°W 45.44'
NE cor. gar. fnd.	S15°W 237.97'	E. edge B.T. drive	West 22.3'

The selected location is accepted by me and is generally accepted by professional surveyors as the best available evidence of the position of the original corner.

C. Description of monument for corner and accessories established to perpetuate locating the position of the corner:

M-3 Standard Kent County Monument

Nail & KC Remon. tag E. side 36" Oak	N04°E 94.41'
Nail & KC Remon. tag E. side 26" Oak	N19°W 152.14'
Nail & KC Remon. tag S. side 10" Locust	East 23.50'
Nail & KC Remon. tag E. side 8" Tri. Locust	S19°W 45.41'
SE corner garage foundation (EDM Meas.)	N50°W 270.96'
NE corner house foundation (EDM Meas.)	S70°W 229.55'
NE corner garage foundation (EDM Meas.)	S15°W 237.77'
E. edge blacktop drive to Hse. #9590	West 22.3'
C/L Fulton St. - North 140'±	



Signed by *Kirk Breitels*
Surveyor's Michigan License No. 30077

Date 3/1/96