

**SURVEY & REMONUMENTATION**

FEB 14 1997

**KENT COUNTY REMONUMENTATION**

**COMMISSION**

**LAND CORNER RECORDATION CERTIFICATE**

Filing Requirement of Act 74, Mich. P.A. 1970

For corners in  
**KENT COUNTY**  
(County)

Located In:

Corner Code #

- |                                      |      |      |       |
|--------------------------------------|------|------|-------|
| 1. Public Land Survey                | T    | R    |       |
|                                      | T    | R    |       |
|                                      | T    | R    |       |
|                                      | T    | R    |       |
| 2. Property Controlling in Section   | S 21 | T 6N | R 10W |
|                                      | S    | T    | R     |
| 3. Miscellaneous Property in Section | S    | T    | R     |
|                                      | S    | T    | R     |
| 4. Lot No. _____, Recorded Plat      |      |      |       |
| 5. Private Claims                    |      |      |       |

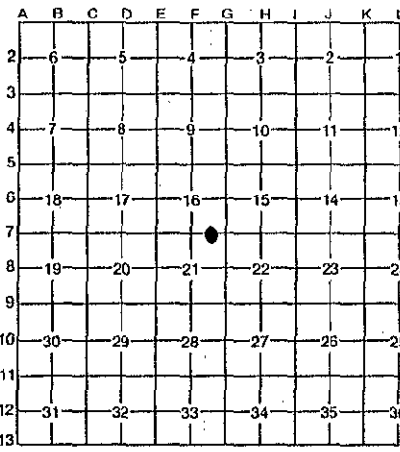
"Other" code #6

**9384**

Register of Deeds Stamp & File Number

I, **Kirk Breitels**, in a field survey on **Sept. 18**, 19 **96**

do hereby certify that under requirements of P.A. 74, Michigan P.A. of 1970, the corner points mentioned in lines 1 and 2 above were in conformance with regulations and rules therefore as required in the current manual of survey instructions of the United States Department of the Interior, Bureau of Land Management or by a decree of a Court of Law and/or that the corner points mentioned in lines 3, 4 and 5 above were in conformance with the rules of the Michigan Board of Professional Surveyors or by a Decree of a Court of Law; established, re-established, monumented, re-monumented, recovered, found as expressed below:



**NOTE: Not more than 4 corners, all in the same town and range, may be recorded on this certificate.**

**A. Description of original monument and accessories and/or subsequent restoration:**

1831      GLO      Not Set

REG. OF DEEDS  
*Kirk Breitels*  
96 OCT 18 AM 8:19  
STATE OF MICHIGAN  
COUNTY OF KENT  
RECEIVED FOR RECORD

**B. Description of corner evidence found and/or method applied in restoring or reestablishing corner:**

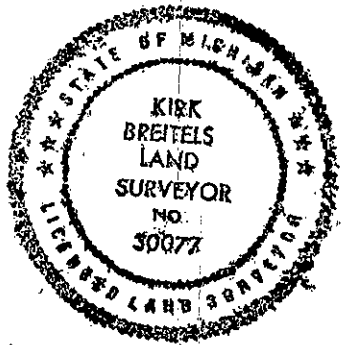
Set Standard Kent Co. Witness Monument on the N. line of Sec. 21 and the C/L Goodwood Dr., the N. line of Sec. 21 as established per LCRC #3707.

The selected location is accepted by me and is generally accepted by professional surveyors as the best available location of the corner.

**C. Description of monument for corner and accessories established to perpetuate locating the position of the corner:**

Standard Kent Co. Witness Monument

NE corner of brick sign	S55°W	41.75'
Set Nail & KC Remon. tag S. side Tw. 24" Oak	N80°W	30.02'
Set Nail & KC Remon. tag E. side P. Pole	N15°W	88.35'
Set Nail & KC Remon. tag S. side Tw. 30" Oak	N90°E	20.51'
NW corner of brick sign	S55°E	42.10'
C/L Manhole	S00°E	17.08'
Computed location of NE corner of Sec. 21	East	493.15'
Concrete Monument	East	33.00'



Signed by *Kirk Breitels*  
30077

Date 10/11/96

Surveyor's Michigan License No.

P.A. 345 1990 KENT COUNTY  
REPR APPROVED 9/26/96  
CHAIRMAN *Hanna Huber*