

APR 27 1995

KENT COUNTY REMONUMENTATION

COMMISSION

LAND CORNER RECORDATION CERTIFICATE
Filing Requirement of Act 74, Mich. P.A. 1970

STATE OF MICHIGAN
 COUNTY OF KENT
 RECEIVED FOR RECORD
 94 DEC -5 AM 8:54

For corners in
 KENT COUNTY

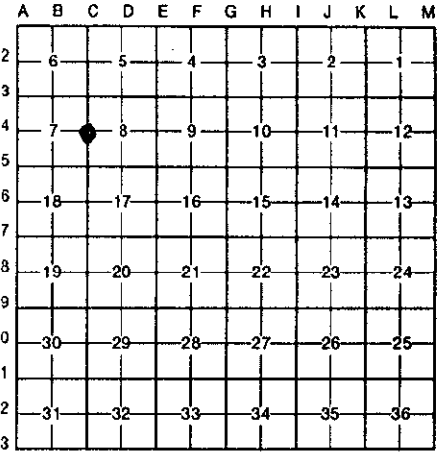
(County)	Located In:	Corner Code =#
1. Public Land Survey	T <u>6N</u> R <u>11W</u>	<u>C-4</u>
	T _____ R _____	_____
	T _____ R _____	_____
	T _____ R _____	_____
2. Property Controlling in Section	S _____ T _____ R _____	_____
	S _____ T _____ R _____	_____
3. Miscellaneous Property in Sec.	S _____ T _____ R _____	_____

W. R. Byl
 REG. OF DEEDS

7615

Register of Deeds Stamp & File Number

4. Lot No. _____, Recorded Plat _____
 5. Private Claims _____



I, William R. Byl, in a field survey on July 12, 19 94, do hereby certify that all requirements of P.A. 74, Michigan P.A. of 1970, the corner points mentioned in lines 1 and 2 above were in conformance with regulations and rules therefore as required in the current manual of survey instructions of the United States Department of the Interior, Bureau of Land Management or by a decree of a Court of Law and/or that the corner points mentioned in lines 3, 4 and 5 above were in conformance with the Michigan Board of Land Surveyors or by a Decree of a Court of Law; established, re-established, monumented, re-monumented, recovered, found as expressed below:

NOTE: Not more than 4 corners, all in the same town and range, may be recorded on this certificate.

A. Description of original monument and accessories and/or subsequent restoration:

C-4	1831	GLO	Mullett	Set Post
	1931,1957	City of Grand Rapids		Point on Manhole
		Williams & Works		Point on Manhole
		MDSH		Point on Manhole
	1984	LCRC #3763	Byl	Set Point on Manhole
	1992	LCRC #6496	Bueche	Point on Manhole

The position of this corner was previously approved by the Kent County Remonumentation Peer Group, monumented by William R. Byl on 2/13/84 and was recorded per LCRC #3763

B. Description of corner evidence found and/or method applied in restoring or reestablishing corner:

C-4 Established Point on Manhole per witnesses from above LCRC as set by William R. Byl. Said Point on Manhole checks with City of Grand Rapids, Williams & Works, MDSH.

<u>LCRC #3763</u>		<u>LCRC #6496</u>	
NW cor. brick bldg.	S50°E 76.00'	NW cor. brick bldg. (N'ly face)	S60°E 76.63'
SE cor. stucco bldg.	N40°W 121.51'	SE cor. stucco bldg.	N40°W 121.51'
NE cor. brick bldg.	S30°W 119.40'	S'ly cor. conc. sign base	N45°E 47.64'
S'ly cor. conc. sign post base	N45°E 47.64'	NE cor. brick bldg. #2407	S30°W 119.39'
		SW cor. CB header	S30°W 48.64'

Point is 0.35' W. & 0.10' N. of C/L MH

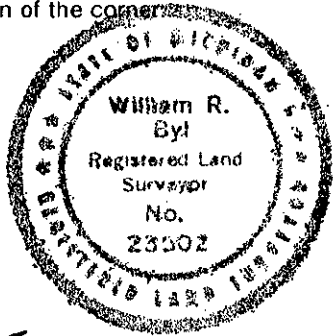
The selected location is accepted by me and is generally accepted by professional surveyors as the best available evidence of the position of the original corner.

C. Description of monument for corner and accessories established to perpetuate locating the position of the corner:

C-4 Point on Manhole at intersection of cut marks on rim

NW cor. brick bldg. (N'ly face)	S60°E 76.63'
SE cor. stucco bldg. (0.5' above walk)	N40°W 121.51'
S'ly cor. conc. sign base	N45°E 47.64'
SW cor. CB header	S30°W 48.60'
NE cor. bldg. #2401	S60°W 60.21'

Point is 0.30' W. & 0.05' N. of C/L MH



P.A. 345 1990 KENT COUNTY
 PEER APPROVED 12/1/94
 CHAIRMAN Harry Hubers

Signed by *W. R. Byl* Date 11/27/94
 Surveyor's Michigan License No. 23502