

# SURVEY & REMONUMENTATION

KENT COUNTY REMONUMENTATION

APR 27 1995

LAND CORNER RECORDATION CERTIFICATE

COMMISSION

Filing Requirement of Act 74, Mich. P.A. 1970

For corners in  
KENT COUNTY

	Located In:	Corner Code #	
(County)			
1. Public Land Survey	T <u>6N</u> R <u>11W</u>	<u>C-9</u>	
	T _____ R _____	_____	
	T _____ R _____	_____	
	T _____ R _____	_____	
2. Property Controlling in Section	S _____ T _____ R _____	_____	
	S _____ T _____ R _____	_____	
3. Miscellaneous Property in Sec.	S _____ T _____ R _____	_____	
	S _____ T _____ R _____	_____	

4. Lot No. \_\_\_\_\_, Recorded Plat \_\_\_\_\_
5. Private Claims \_\_\_\_\_

I, William R. Byl, in a field survey on Sept. 16, 19 94, do hereby certify that under requirements of P.A. 74, Michigan P.A. of 1970, the corner points mentioned in lines 1 and 2 above were in conformance with regulations and rules therefore as required in the current manual of survey instructions of the United States Department of the Interior, Bureau of Land Management or by a decree of a Court of Law and/or that the corner points mentioned in lines 3, 4 and 5 above were in conformance with the regulations of the Michigan Board of Land Surveyors, established, re-established, monumented, re-monumented, recovered, found as expressed below:

**NOTE: Not more than 4 corners, all in the same town and range, may be recorded on this certificate.**

**A. Description of original monument and accessories and/or subsequent restoration:**

C-9	1831	GLO	Mullett	Set Post
	1965	Kent Co. Wit.		Iron in mon. box
	1974	LCRC #635	Spicer	3/4" Iron in mon. box
	1977	LCRC #1064	McCloskey	Iron in mon. box
	1981	LCRC #2477	Hackbardt	Set Kent County Monument
	1992	LCRC #6501	Bueche	Kent County Monument

P.A. 345 1990 KENT COUNTY  
PEER APPROVED 12/11/94  
CHAIRMAN Harry Huber

The position of this corner was previously approved by the Kent County Remonumentation Peer Group, monumented by Glen S. Hackbardt on 9/23/81 and was recorded per LCRC #2477

**B. Description of corner evidence found and/or method applied in restoring or reestablishing corner:**

C-9 Found standard Kent Co. Mon. (Harrison) per witnesses from above LCRC as set by Glen S. Hackbardt in place of the 1" Iron he found in a mon. box. Said 1" Iron in mon. box checks with Kent Co. Wit. & LCRC's #635 & #1064.

<u>LCRC #2477</u>	<u>LCRC #6501</u>	
C/L hydrant	S55°E 66.60'	C/L hydrant
SE cor. CB header	N35°E 64.00'	SW corner conc. for signal
C/L manhole	S30°W 44.95'	NE corner conc. for signal
Int. N. edge & E. edge of conc. walks	N45°W 67.32'	NW corner conc. for signal
		KC Remon. tag & nail S. side P. Pole
		N40°E 65.46'
		N45°E 65.41'
		N45°E 76.27'
		N45°W 76.23'
		S45°E 73.34'
		S55°W 107.92'
		N40°E 65.46'

The selected location is accepted by me and is generally accepted by professional surveyors as the best available evidence of the position of the original corner.

**C. Description of monument for corner and accessories established to perpetuate locating the position of the corner:**

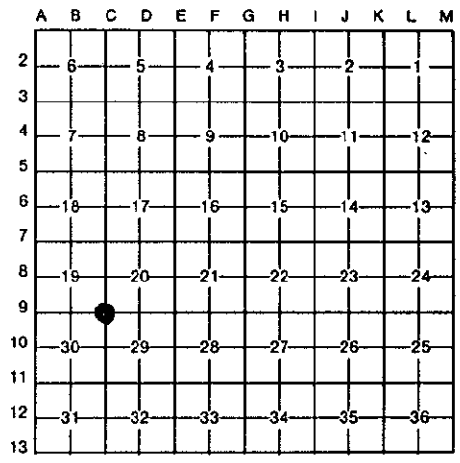
C-9 Standard Kent County Monument				
C/L hydrant	S55°E	76.24'		
SW corner conc. for signal	N45°W	76.29'		
NE corner conc. for signal	S45°E	73.37'		
KC Remon. tag & nail S. side P. Pole	N40°E	65.46'		
Set KC Remon. tag & nail SE side Guy Pole	S45°W	65.41'		

STATE OF MICHIGAN  
COUNTY OF KENT  
RECEIVED FOR RECORD  
94 DEC -5 AM 8:55

*W. R. Byl*  
REG. OF DEEDS

7620

Register of Deeds Stamp & File Number



Signed by W. R. Byl Date 11/27/94

Surveyor's Michigan License No. 23502

