

**SURVEY & REMONUMENTATION**

APR 27 1995

KENT COUNTY REMONUMENTATION

STATE OF MICHIGAN  
COUNTY OF KENT  
RECEIVED FOR RECORD  
94 DEC -5 AM 8:55

**COMMISSION**

**LAND CORNER RECORDATION CERTIFICATE**  
Filing Requirement of Act 74, Mich. P.A. 1970

For corners in  
KENT COUNTY  
(County)

Located In: Corner Code #

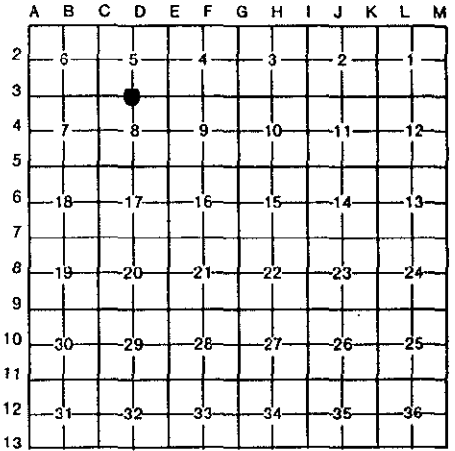
1. Public Land Survey	T <u>6N</u> R <u>11W</u>	<u>D-3</u>
	T _____ R _____	_____
	T _____ R _____	_____
	T _____ R _____	_____
2. Property Controlling in Section	S _____ T _____ R _____	_____
	S _____ T _____ R _____	_____
3. Miscellaneous Property in Sec.	S _____ T _____ R _____	_____
	S _____ T _____ R _____	_____

*W. R. Byl*  
REG. OF DEEDS

7626

Register of Deeds Stamp & File Number

4. Lot No. \_\_\_\_\_, Recorded Plat \_\_\_\_\_  
5. Private Claims \_\_\_\_\_



I, William R. Byl, in a field survey on Sept. 16, 19 94, do hereby certify that under requirements of P.A. 74, Michigan P.A. of 1970, the corner points mentioned in lines 1 and 2 above were in conformance with regulations and rules therefore as required in the current manual of survey instructions of the United States Department of the Interior, Bureau of Land Management or by a decree of a Court of Law and/or that the corner points mentioned in lines 3, 4 and 5 above were in conformance with the rules of the Michigan Board of Land Surveyors or by a Decree of a Court of Law; established, re-established, monumented, re-monumented, recovered, found as expressed below:

**NOTE: Not more than 4 corners, all in the same town and range, may be recorded on this certificate.**

**A. Description of original monument and accessories and/or subsequent restoration:**

D-3 1831 GLO Mullett Set Post  
1902-57 Williams & Works Point in RR tracks  
1931, 1957 City of Grand Rapids Point in RR tracks  
C & O RR maps Point in RR tracks  
1984 LCRC #3769 Set PK Nail & KC Remon. tag  
1992 LCRC #6506 Bueche PK Nail

The position of this corner was previously approved by the Kent County Remonumentation Peer Group, monumented by William R. Byl on 2/13/84 and was recorded per LCRC #3769

**B. Description of corner evidence found and/or method applied in restoring or reestablishing corner:**

D-3 Found PK Nail (no tag) per witnesses from above LCRC as set by William R. Byl from plat measurements and bearings. Said PK Nail agrees with City of Grand Rapids measurements in Sec. 5, more or less. Corner is 1.3' West of C/L East track.

LCRC #3769 LCRC #6506  
SW cor. brick bldg. #1175 N20°E 60.57' same witnesses as LCRC #3769  
SW cor. brick bldg. #1175 N60°E 66.32'  
NE cor. brick bldg. #1152 S50°W 95.01' plus  
SE cor. brick bldg. #1149 N55°W 143.05'  
PK nails & tags 50.00' East and West SW cor. bldg. S60°E 185.75'

The selected location is accepted by me and is generally accepted by professional surveyors as the best available evidence of the position of the original corner.

**C. Description of monument for corner and accessories established to perpetuate locating the position of the corner:**

D-3 PK Nail in RR crossing plank  
SW cor. brick veneer bldg. #1175 (shop) N20°E 60.57' P.A. 345 1990 KENT COUNTY  
SW cor. brick veneer bldg. #1175 (office) N60°E 66.24' PEER APPROVED 12/1/94  
NE cor. brick veneer bldg. #1152 S50°W 95.10'  
SE cor. (most E'ly) brick veneer bldg. #1149 N55°W 143.23' CHAIRMAN *Harry Huber*  
SW cor. bldg. S60°E 185.75'

Signed by *W. R. Byl* Date 112794  
Surveyor's Michigan License No. 23502

