

SURVEY & REMONUMENTATION

APR 27 1995

KENT COUNTY REMONUMENTATION

STATE OF MICHIGAN
COUNTY OF KENT
RECEIVED FOR RECORD

COMMISSION

LAND CORNER RECORDATION CERTIFICATE
Filing Requirement of Act 74, Mich. P.A. 1970

94 DEC -5 AM 8:56

For corners in
KENT COUNTY
(County)

Located In: Corner Code -#

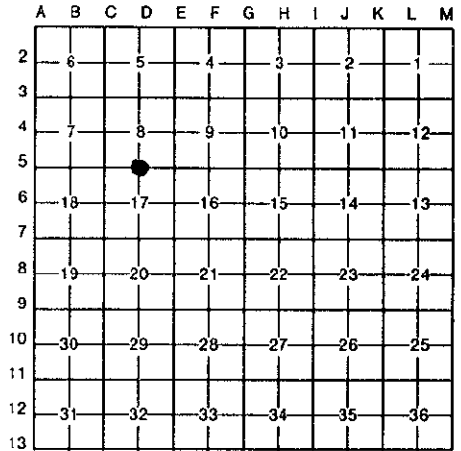
- | | | |
|------------------------------------|--------------------------|------------|
| 1. Public Land Survey | T <u>6N</u> R <u>11W</u> | <u>D-5</u> |
| | T _____ R _____ | _____ |
| | T _____ R _____ | _____ |
| | T _____ R _____ | _____ |
| 2. Property Controlling in Section | S _____ T _____ R _____ | _____ |
| | S _____ T _____ R _____ | _____ |
| 3. Miscellaneous Property in Sec. | S _____ T _____ R _____ | _____ |
| | S _____ T _____ R _____ | _____ |

Lucy Bond
REG. OF DEEDS

7627

Register of Deeds Stamp & File Number

4. Lot No. _____, Recorded Plat _____
5. Private Claims _____



I, William R. Byl, in a field survey on Sept. 14, 19 94, do hereby certify that under requirements of P.A. 74, Michigan P.A. of 1970, the corner points mentioned in lines 1 and 2 above were in conformance with regulations and rules therefore as required in the current manual of survey instructions of the United States Department of the Interior, Bureau of Land Management or by a decree of a Court of Law and/or that the corner points mentioned in lines 3, 4 and 5 above were in conformance with the rules of the Michigan Board of Land Surveyors or by a Decree of a Court of Law; established, re-established, monumented, re-monumented, recovered, found as expressed below:

NOTE: Not more than 4 corners, all in the same town and range, may be recorded on this certificate.

A. Description of original monument and accessories and/or subsequent restoration:

- | | | | | |
|-----|------|------------|---------|--------------------------|
| D-5 | 1831 | GLO | Mullett | Set Post |
| | 1968 | MDOT | | Witnesses given |
| | 1974 | LCRC #764 | Bonnema | 4" Clay Tile in Mon. Box |
| | 1984 | LCRC #4094 | Rosema | Set Kent County Monument |
| | 1992 | LCRC #6507 | Bueche | Kent County Monument |

P.A. 345 1990 KENT COUNTY

PEER APPROVED 12/1/94
CHAIRMAN *Harry Fisher*

The position of this corner was previously approved by the Kent County Remonumentation Peer Group, monumented by Maurice J. Rosema on 10/18/84 and was recorded per LCRC #4094

B. Description of corner evidence found and/or method applied in restoring or reestablishing corner:

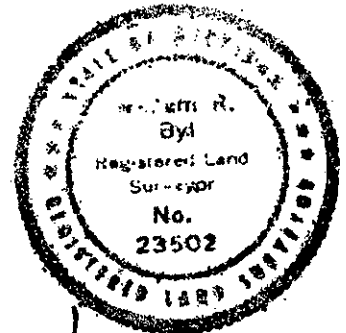
D-5 Found standard Kent Co. Mon. (Harrison) per witnesses from above LCRC as set by Maurice J. Rosema in place of the 3/8" Iron he found in a mon. box. Said Iron in mon. box checks with MDOT and LCRC #764.

LCRC #4094		LCRC #6507	
Center top of hydr.	S25°E 44.86'	C/L top of hydrant	S25°E 44.97'
PK nail & tag curb joint	S60°W 64.18'	SE cor. brick bldg.	N25°W 91.46'
SE cor. brick bldg.	N25°W 61.56'	C/L top of R/W marker	N00°E 52.74'
Center to R/W marker	N00°E 52.92'	Face of curb	North 32.41'
Face of curb	North 32.41'	NW cor. metal sign	S50°W 104.72'
PK nail & tag curb joint	S25°W 51.38'	NE cor. conc. LP base	S20°W 55.67'
		SE cor. fnd. Hse. #1150	N50°W 116.18'
		C/L Bit. E-W is N. 3.5'; C/L Bit. Dr. S.	

The selected location is accepted by me and is generally accepted by professional surveyors as the best available evidence of the position of the original corner.

C. Description of monument for corner and accessories established to perpetuate locating the position of the corner:

- D-5 Standard Kent County Monument in mon. box
- | | |
|--|---------------|
| C/L top of hydrant | S25°E 44.58' |
| SE cor. brick bldg. | N25°W 91.43' |
| C/L top of R/W marker | N00°E 52.74' |
| Face of curb | N00°E 32.41' |
| NW cor. metal sign | S50°W 104.72' |
| NE cor. conc. Lt. Pole base | S20°W 55.60' |
| SE cor. fnd. Hse. #1150 | N50°W 116.07' |
| C/L Bit. E-W is N. 3.5'; C/L Bit. Dr. S. | |



Signed by *W. R. Byl* Date 11/27/94

Surveyor's Michigan License No. 23502