

SURVEY & REMONUMENTATION

APR 27 1995

KENT COUNTY REMONUMENTATION

COMMISSION

LAND CORNER RECORDATION CERTIFICATE
Filing Requirement of Act 74, Mich. P.A. 1970

STATE OF MICHIGAN
COUNTY OF KENT
RECEIVED FOR RECORD
94 DEC -5 AM 8:56

For corners in
KENT COUNTY

(County)	Located In:	Corner Code #
1. Public Land Survey	T <u>6N</u> R <u>11W</u>	<u>D-7</u>
	T _____ R _____	_____
	T _____ R _____	_____
	T _____ R _____	_____
2. Property Controlling in Section	S _____ T _____ R _____	_____
	S _____ T _____ R _____	_____
3. Miscellaneous Property in Sec.	S _____ T _____ R _____	_____

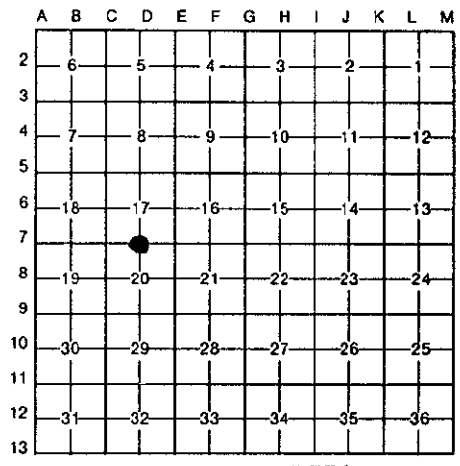
Lucy Bond
REG. OF DEEDS

7628

Register of Deeds Stamp & File Number

4. Lot No. _____, Recorded Plat _____
5. Private Claims _____

I, William R. Byl, in a field survey on Sept. 16, 19 94, do hereby certify that under requirements of P.A. 74, Michigan P.A. of 1970, the corner points mentioned in lines 1 and 2 above were in conformance with regulations and rules therefore as required in the current manual of survey instructions of the United States Department of the Interior, Bureau of Land Management or by a decree of a Court of Law and/or that the corner points mentioned in lines 3, 4 and 5 above were in conformance with the rules of the Michigan Board of Land Surveyors or by a Decree of a Court of Law; established, re-established, monumented, re-monumented, recovered, found as expressed below:



NOTE: Not more than 4 corners, all in the same town and range, may be recorded on this certificate.

A. Description of original monument and accessories and/or subsequent restoration:

D-7	1831	GLO	Mullett	Set. Post
		Kent Co. Wit.		Iron
	1981	LCRC #2476	Hackbardt	Set Kent County Monument
	1990	LCRC #5490	Murphy	Kent County Monument
	1992	LCRC #6508	Bueche	Kent County Monument

P.A. 345 1990 KENT COUNTY
PEER APPROVED 12/1/94
CHAIRMAN *W. R. Byl*

The position of this corner was previously approved by the Kent County Remonumentation Peer Group, monumented by Glen S. Hackbardt on 9/10/81 and was recorded per LCRC #2476

B. Description of corner evidence found and/or method applied in restoring or reestablishing corner:

D-7 Found standard Kent Co. Mon. (Harrison) per witnesses from above LCRC as set by Glen S. Hackbardt in place of the 1/2" x 18" Exxel capped iron he found. Said Exxel capped iron checks with witnesses and survey information by others and adjoining plats.

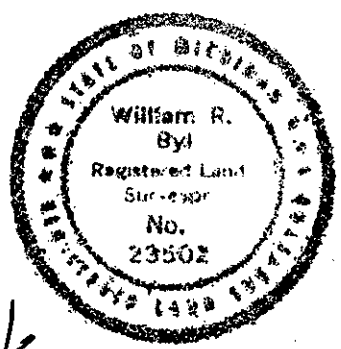
LCRC #2476	LCRC #6508
C/L Hydrant N20°W 61.60'	C/L Hydrant N20°W 61.55'
C/L Manhole N10°E 24.87'	Nail & KC Remon. tag in curb joint N60°W 83.53'
NW cor. CB header N70°E 48.60'	SW cor. brick to hse. #5544 N40°E 80.79'
C/L Manhole S05°W 15.90'	NE cor. fnd. to gar. hse. #1208 S40°E 104.78'
	PK & tag W. side P. Pole S15°W 81.74'
	PK East 3.32'; On C/L Bit. Rd. E-W & N

The selected location is accepted by me and is generally accepted by professional surveyors as the best available evidence of the position of the original corner.

C. Description of monument for corner and accessories established to perpetuate locating the position of the corner:

D-7 Standard Kent County Monument

C/L Hydrant	N20°W	61.55'
Nail & KC Remon. tag in curb joint	N60°W	83.53'
SW cor. brick to hse. #5544	N40°E	80.84'
NE cor. fnd. to gar. hse. #1208	S40°E	104.78'
PK & tag W. side P. Pole	S15°W	81.70'
PK & tag Guy Pole	N25°W	43.22'
Concrete Monument	N00°E	32.98'
PK East 3.32'; On C/L Bit. Rd. E-W & N		



Signed by *W. R. Byl* Date 11/27/94
Surveyor's Michigan License No. 23502