

SURVEY & REMONUMENTATION

KENT COUNTY REMONUMENTATION

STATE OF MICHIGAN
COUNTY OF KENT
RECEIVED FOR RECORD
94 DEC -5 AM 8:56

APR 27 1995

LAND CORNER RECORDATION CERTIFICATE Filing Requirement of Act 74, Mich. P.A. 1970

For corners in **COMMISSION**
KENT COUNTY

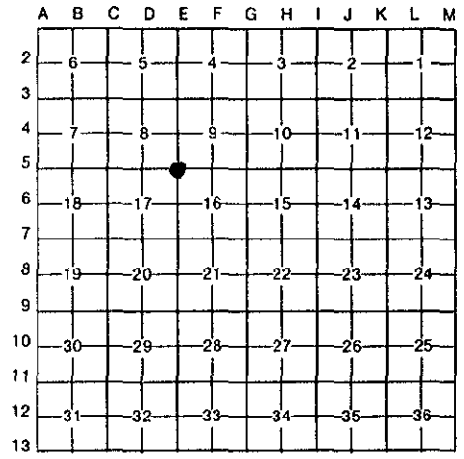
| | | |
|---------------------------------------|--------------------------|---------------|
| | Located In: | Corner Code # |
| 1. Public Land Survey | T <u>6N</u> R <u>11W</u> | <u>E-5</u> |
| | T _____ R _____ | _____ |
| | T _____ R _____ | _____ |
| | T _____ R _____ | _____ |
| 2. Property Controlling in Section | S _____ T _____ R _____ | _____ |
| | S _____ T _____ R _____ | _____ |
| 3. Miscellaneous Property in Sec. | S _____ T _____ R _____ | _____ |
| | S _____ T _____ R _____ | _____ |
| 4. Lot No. _____, Recorded Plat _____ | | |
| 5. Private Claims _____ | | |

W. J. Rosema
REG. OF DEEDS

7636

Register of Deeds Stamp & File Number

I, William R. Byl, in a field survey on Sept. 12, 19 94, do hereby certify that under requirements of P.A. 74, Michigan P.A. of 1970, the corner points mentioned in lines 1 and 2 above were in conformance with regulations and rules therefore as required in the current manual of survey instructions of the United States Department of the Interior, Bureau of Land Management or by a decree of a Court of Law and/or that the corner points mentioned in lines 3, 4 and 5 above were in conformance with the rules of the Michigan Board of Land Surveyors or by a Decree of a Court of Law; established, re-established, monumented, re-monumented, recovered, found as expressed below:



NOTE: Not more than 4 corners, all in the same town and range, may be recorded on this certificate.

A. Description of original monument and accessories and/or subsequent restoration:

| | | | | | |
|-----|------|---------------|---------|--------------------------------------|-----------------------------|
| E-5 | 1831 | GLO | Mullett | Set Post | P.A. 345 1990 KENT COUNTY |
| | | Kent Co. Wit. | | Mon. Box | PEER APPROVED 12/1/94 |
| | 1968 | MDOT | | Witnesses given | CHAIRMAN <i>Harry Huber</i> |
| | 1974 | LCRC #764 | Bonnema | Mon. Box | |
| | 1984 | LCRC #4093 | Rosema | Set Kent County Monument in mon. box | |
| | 1992 | LCRC #6515 | Bueche | Kent County Monument | |

The position of this corner was previously approved by the Kent County Remonumentation Peer Group, monumented by Maurice J. Rosema on 10/18/84 and was recorded per LCRC #4093

B. Description of corner evidence found and/or method applied in restoring or reestablishing corner:

E-5 Found standard Kent Co. Mon. (Harrison) per witnesses from above LCRC as set by Maurice J. Rosema. Said Mon. Box checks with Kent Co. Wit., MDOT, and LCRC #764.

| | |
|-----------------------------------|--|
| <u>LCRC #4093</u> | <u>LCRC #6515</u> |
| Center top of hydr. | S55°E 82.54' C/L top hydrant S55°E 82.35' |
| N'yly cor. of CB | S50°W 66.64' SE cor. CB casting N60°W 83.50' |
| S'yly cor. of CB | N50°W 43.24' SE cor. conc. sign N30°W 88.77' |
| Nail & tag 12" Locust | N25°E 116.03' "X" cut conc. N. side base for |
| C/L of Kalamazoo Ave. W. 103' m/l | signal S20°W 60.84' |
| | Nail & tag SW side PP N20°W 178.34' |
| | C/L SE bolt in conc. for signal |
| | box S70°W 156.18' |

The selected location is accepted by me and is generally accepted by professional surveyors as the best available evidence of the position of the original corner.

C. Description of monument for corner and accessories established to perpetuate locating the position of the corner:

| | |
|---|---------------|
| E-5 Standard Kent County Monument | |
| C/L top hydrant | S55°E 82.35' |
| SE cor. CB casting | N60°W 83.37' |
| "X" cut conc. N. side base for signal | S20°W 60.77' |
| Set Nail & KC Remon. tag E. side P. Pole | N20°W 131.31' |
| Face of 12" Steel Guy Pole | N65°E 113.45' |
| NE cor. conc. base of signal control box (at grade) | S70°W 155.10' |



Signed by *W. R. Byl*
Surveyor's Michigan License No. 23502

Date 11/27/94