

# SURVEY & REMONUMENTATION

KENT COUNTY REMONUMENTATION

STATE OF MICHIGAN  
COUNTY OF KENT  
RECEIVED FOR RECORD

APR 27 1995

LAND CORNER RECORDATION CERTIFICATE  
Filing Requirement of Act 74, Mich. P.A. 1970

94 DEC -5 AM 8:56

For corners in **COMMISSION**  
KENT COUNTY

(County)	Located In:	Corner Code #
1. Public Land Survey	T <u>6N</u> R <u>11W</u>	<u>E-6</u>
	T _____ R _____	_____
	T _____ R _____	_____
	T _____ R _____	_____
2. Property Controlling in Section	S _____ T _____ R _____	_____
	S _____ T _____ R _____	_____
3. Miscellaneous Property in Sec.	S _____ T _____ R _____	_____
	S _____ T _____ R _____	_____

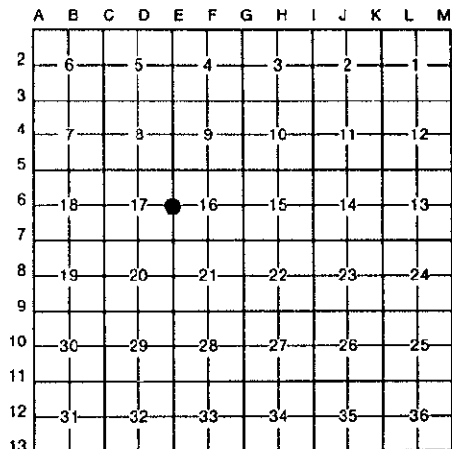
*Lee J. Bond*  
REG. OF DEEDS

7637

Register of Deeds Stamp & File Number

4. Lot No. \_\_\_\_\_, Recorded Plat \_\_\_\_\_  
5. Private Claims \_\_\_\_\_

I, William R. Byl, in a field survey on Sept. 14, 19 94, do hereby certify that under requirements of P.A. 74, Michigan P.A. of 1970, the corner points mentioned in lines 1 and 2 above were in conformance with regulations and rules therefore as required in the current manual of survey instructions of the United States Department of the Interior, Bureau of Land Management or by a decree of a Court of Law and/or that the corner points mentioned in lines 3, 4 and 5 above were in conformance with the rules of the Michigan Board of Land Surveyors or by a Decree of a Court of Law; established, re-established, monumented, re-monumented, recovered, found as expressed below:



**NOTE: Not more than 4 corners, all in the same town and range, may be recorded on this certificate.**

A. Description of original monument and accessories and/or subsequent restoration:

E-6	1831	GLO	Mullett	Set Post
		Kent Co. Wit.		"X" in conc.
	1974	LCRC #764	Bonnema	PK Nail
	1982	LCRC #3100	Byl	Set Kent County Monument
	1992	LCRC #6516	Bueche	Reset Kent County Monument after const.

P.A. 345 1990 KENT COUNTY  
PEER APPROVED 12/11/94  
CHAIRMAN *Harry Huber*

The position of this corner was previously approved by the Kent County Remonumentation Peer Group, monumented by William R. Byl on 10/14/82 and was recorded per LCRC #3100

B. Description of corner evidence found and/or method applied in restoring or reestablishing corner:

E-6 Found standard Kent Co. Mon. (Harrison) per witnesses from above LCRC as set by John C. Bueche at same location as set by William R. Byl in 1982 in place of the PK Nail he found. Said PK Nail checks with LCRC #764.

LCRC #3100		LCRC #6516	
Nail & tag P. Pole	S65°W 44.74'	Nail & KC tag N. side PP	S67°W 44.54'
Nail & tag P. Pole	S70°E 50.28'	Nail & KC tag N. side PP	N62°E 50.48'
SW cor. conc. bridge	N55°W 37.90'	Nail & KC tag E. side 15" Sycamore	S12°W 153.64'
SE cor. conc. bridge	N55°E 39.33'	Nail & KC tag N. side 7" Maple	S40°W 143.52'
		Nail & KC tag S. side 20" Sycamore	N67°W 52.48'
		Nail & KC tag W. side 12" Maple	N29°E 231.02'
		SW cor. conc. bridge	N55°W 37.90'

The selected location is accepted by me and is generally accepted by professional surveyors as the best available evidence of the position of the original corner.

C. Description of monument for corner and accessories established to perpetuate locating the position of the corner:

E-6 Standard Kent County Monument			
Nail & KC Remon. tag N. side P. Pole	S67°W	44.59'	
Nail & KC Remon. tag N. side P. Pole	S62°E	50.42'	
Nail & KC Remon. tag S. side 20" Sycamore	N67°W	52.62'	
Set Nail & KC Remon. tag E. side Lt. Pole	S35°W	78.94'	
SW cor. conc. bridge	N55°W	38.04'	
SE cor. conc. bridge	N60°E	47.47'	



Signed by *W.R. Byl*  
Surveyor's Michigan License No. 23502

Date 1/27/94