

SURVEY & REMONUMENTATION

APR 27 1995

KENT COUNTY REMONUMENTATION

STATE OF MICHIGAN
COUNTY OF KENT
RECEIVED FOR RECORD

COMMISSION

LAND CORNER RECORDATION CERTIFICATE
Filing Requirement of Act 74, Mich. P.A. 1970

94 DEC -5 AM 8:56

For corners in
KENT COUNTY

(County)	Located In:	Corner Code #
1. Public Land Survey	T <u>6N</u> R <u>11W</u>	<u>E-8</u>
	T _____ R _____	_____
	T _____ R _____	_____
	T _____ R _____	_____
2. Property Controlling in Section	S _____ T _____ R _____	_____
	S _____ T _____ R _____	_____
3. Miscellaneous Property in Sec.	S _____ T _____ R _____	_____
	S _____ T _____ R _____	_____

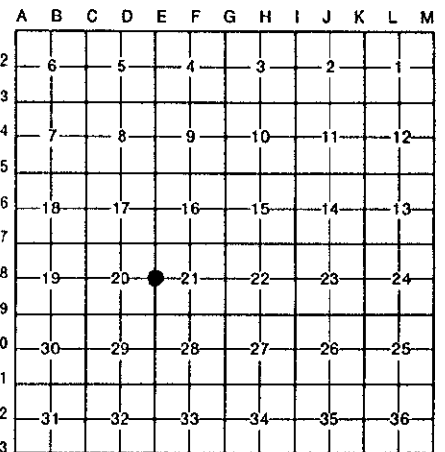
W. R. Byl
REG. OF DEEDS

7639

Register of Deeds Stamp & File Number

4. Lot No. _____, Recorded Plat _____
5. Private Claims _____

I, William R. Byl, in a field survey on Sept. 21, 19 94, do hereby certify that under requirements of P.A. 74, Michigan P.A. of 1970, the corner points mentioned in lines 1 and 2 above were in conformance with regulations and rules therefore as required in the current manual of survey instructions of the United States Department of the Interior, Bureau of Land Management or by a decree of a Court of Law and/or that the corner points mentioned in lines 3, 4 and 5 above were in conformance with the rules of the Michigan Board of Land Surveyors or by a Decree of a Court of Law; established, re-established, monumented, re-monumented, recovered, found as expressed below:



NOTE: Not more than 4 corners, all in the same town and range, may be recorded on this certificate.

A. Description of original monument and accessories and/or subsequent restoration:

E-8	1831	GLO	Mullett	Set Post	P.A. 345 1990 KENT COUNTY
	1904-69	Williams & Works		Iron-"+" cut	PEER APPROVED 12/11/94
		Kent Co. Wit.		"X" cut in pavement	CHAIRMAN <i>Stumpfhuber</i>
	1977	LCRC #1064	McCloskey	Iron in Mon. Box	
	1985	LCRC #4258	Byl	Set Kent County Monument	
	1992	LCRC #6625	Bueche	Reset Kent County Monument after const.	

The position of this corner was previously approved by the Kent County Remonumentation Peer Group, monumented by William R. Byl on 5/10/85 and was recorded per LCRC #4258

B. Description of corner evidence found and/or method applied in restoring or reestablishing corner:

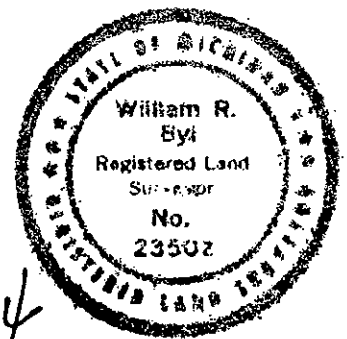
E-8 Found standard Kent Co. Mon. (Harrison) per witnesses from above LCRC as set by John C. Bueche in the same location as set by William R. Byl in 1985 in place of the PK Nail over a 1/4" x 3" steel plug in conc. pavement he found. Said PK Nail & steel plug checks with adjoining plats. LCRC #1064 incorrect??, no mon. box found-witnesses gone??

LCRC #4258		LCRC #6625	
NE cor. brk. ven. hse.	S50°W 93.48'	NE cor. brick veneer of hse.	S50°W 93.48'
NW cor. brk. ven. hse.	N45°E 127.69'	NW cor. brick veneer of hse.	N45°E 127.69'
SE cor. fnd. hse.	N75°W 95.23'	SE cor. fnd. of hse.	N75°W 95.23'
Nail & tag P. Pole	N90°W 42.32'	Nail & KC tag S. side P. Pole	N90°W 42.32'
Nail & tag MBT Pole	S80°E 48.58'	Nail & KC tag N. side MBT Pole	S80°E 48.58'
		NE cor. brick garage at door	N55°W 106.81'
		NE cor. brick hse. #3955	N30°W 174.79'

The selected location is accepted by me and is generally accepted by professional surveyors as the best available evidence of the position of the original corner.

C. Description of monument for corner and accessories established to perpetuate locating the position of the corner:

E-8 Standard Kent County Monument			
NE cor. brick veneer of hse.	S50°W	93.61'	
NW cor. brick veneer of hse.	N45°E	127.60'	
SE cor. fnd. of hse.	N75°W	95.23'	
Nail & KC Remon. tag S. side P. Pole	N90°W	42.32'	
Nail & KC Remon. tag N. side MBT Pole	S80°E	48.61'	
NE cor. brick garage at door	N55°W	106.81'	
NE cor. brick hse. #3955	N30°W	174.66'	
SW cor. brick hse. #3960	N75°E	92.12'	



Signed by *W. R. Byl*
Surveyor's Michigan License No. 23502

Date 1/27/94