

SURVEY & REMONUMENTATION

APR 27 1995

KENT COUNTY REMONUMENTATION

STATE OF MICHIGAN
COUNTY OF KENT
RECEIVED FOR RECORD.

COMMISSION

LAND CORNER RECORDATION CERTIFICATE
Filing Requirement of Act 74, Mich. P.A. 1970

94 DEC -5 AM 8:57

For corners in
KENT COUNTY

(County)

Located In:

Corner Code #

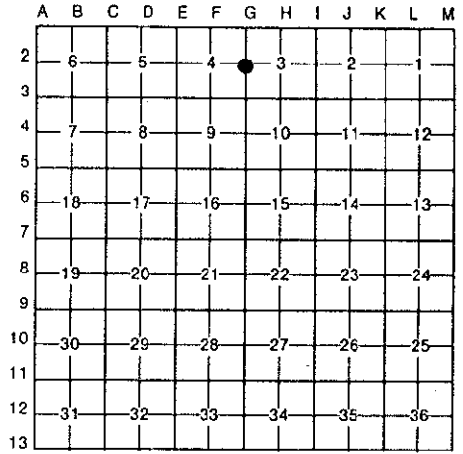
1. Public Land Survey	T	<u>6N</u>	R	<u>11W</u>	<u>G-2</u>
	T		R		
	T		R		
	T		R		
2. Property Controlling in Section	S		T	R	
	S		T	R	
3. Miscellaneous Property in Sec.	S		T	R	
	S		T	R	

REG. OF DEEDS

7653

Register of Deeds Stamp & File Number

4. Lot No. _____, Recorded Plat _____
5. Private Claims _____



I, William R. Byl, in a field survey on July 7, 19 94, do hereby certify that under requirements of P.A. 74, Michigan P.A. of 1970, the corner points mentioned in lines 1 and 2 above were in conformance with regulations and rules therefore as required in the current manual of survey instructions of the United States Department of the Interior, Bureau of Land Management or by a decree of a Court of Law and/or that the corner points mentioned in lines 3, 4 and 5 above were in conformance with the rules of the Michigan Board of Land Surveyors or by a decree of a Court of Law; established, re-established, monumented, re-monumented, recovered, found as expressed below:

NOTE: Not more than 4 corners, all in the same town and range, may be recorded on this certificate.

A. Description of original monument and accessories and/or subsequent restoration:

G-2	1831	GLO	Mullett	Set Post
		Kent Co. Wit.		Boat Spike
	1971	LCRC #48	Chambers	PK nail
	1982	LCRC #2993	Byl	Set Kent County Monument
	1992	LCRC #6530	Bueche	Kent County Monument

P.A. 345 1990 KENT COUNTY
PEER APPROVED 12/1/99
CHAIRMAN *Harry Kubera*

The position of this corner was previously approved by the Kent County Remonumentation Peer Group, monumented by William R. Byl on 5/26/82 and was recorded per LCRC #2993

B. Description of corner evidence found and/or method applied in restoring or reestablishing corner:

G-2 Found standard Kent Co. Mon. (Harrison) per witnesses from above LCRC as set by William R. Byl in place of the PK Nail he found. Said PK Nail checks with Kent Co. Wit. and LCRC #48.

LCRC #2993		LCRC #6530	
C/L top hydrant	N35°W 40.56'	C/L top nut of hydrant	N35°W 40.56'
C/L walk signal post	N60°W 44.93'	C/L walk signal post	N60°W 44.93'
Nail & tag CP Pole	S45°W 42.82'	Nail & tag W. side CP Pole	S45°W 42.82'
Nail & tag CP Pole	N50°E 28.90'	Face of fence post	S45°E 47.43'
Face of fence post	S45°E 47.43'	NW cor. brick hse. #2405 Boston	N35°E 117.41'

The selected location is accepted by me and is generally accepted by professional surveyors as the best available evidence of the position of the original corner.

C. Description of monument for corner and accessories established to perpetuate locating the position of the corner:

G-2 Standard Kent County Monument			
C/L top nut of hydrant	N35°W	40.56'	
C/L walk signal post	N60°W	44.95'	
Nail & KC Remon. tag W. side CP Pole	S45°W	42.84'	
Face of fence post	S45°E	47.43'	
NW cor. brick hse. #2405 Boston	N35°E	117.33'	
Near edge of manhole rim	W'y	0.74'	
Capped Rerods: NE 65.50'; NW 74.25'; SW 71.82'; SE 77.36'			



Signed by *William R. Byl*
Surveyor's Michigan License No. 23502

Date 112794