

APR 27 1995

KENT COUNTY REMONUMENTATION

STATE OF MICHIGAN  
COUNTY OF KENT  
RECEIVED FOR RECORD

COMMISSION

LAND CORNER RECORDATION CERTIFICATE

Filing Requirement of Act 74, Mich. P.A. 1970

94 DEC -5 AM 8:57

For corners in  
**KENT COUNTY**  
(County)

Located In:

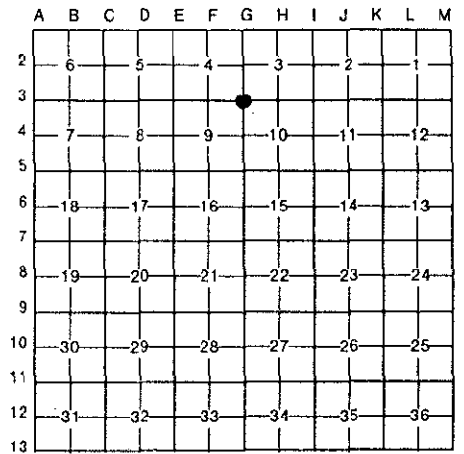
Corner Code #

- |                                       |   |    |   |     |     |
|---------------------------------------|---|----|---|-----|-----|
| 1. Public Land Survey                 | T | 6N | R | 11W | G-3 |
|                                       | T |    | R |     |     |
|                                       | T |    | R |     |     |
|                                       | T |    | R |     |     |
| 2. Property Controlling in Section    | S |    | T | R   |     |
|                                       | S |    | T | R   |     |
| 3. Miscellaneous Property in Sec.     | S |    | T | R   |     |
|                                       | S |    | T | R   |     |
| 4. Lot No. _____, Recorded Plat _____ |   |    |   |     |     |
| 5. Private Claims _____               |   |    |   |     |     |

*W. R. Byl*  
REG. OF DEEDS

7654

Register of Deeds Stamp & File Number



I, William R. Byl, in a field survey on Sept. 22, 19 94, do hereby certify that under requirements of P.A. 74, Michigan P.A. of 1970, the corner points mentioned in lines 1 and 2 above were in conformance with regulations and rules therefore as required in the current manual of survey instructions of the United States Department of the Interior, Bureau of Land Management or by a decree of a Court of Law and/or that the corner points mentioned in lines 3, 4 and 5 above were in conformance with the rules of the Michigan Board of Land Surveyors or by a Decree of a Court of Law; established, re-established, monumented, re-monumented, recovered, found as expressed below:

**NOTE: Not more than 4 corners, all in the same town and range, may be recorded on this certificate.**

A. Description of original monument and accessories and/or subsequent restoration:

- |     |         |                  |          |                          |
|-----|---------|------------------|----------|--------------------------|
| G-3 | 1831    | GLO              | Mullett  | Set Post                 |
|     | 1920-72 | Williams & Works |          | Iron-PK nail             |
|     | 1946    | Kent Co. Wit.    |          | Iron                     |
|     | 1971    | LCRC #48         | Chambers | PK Nail                  |
|     | 1985    | LCRC #4259       | Byl      | Set Kent County Monument |
|     | 1992    | LCRC #6531       | Bueche   | Kent County Monument     |

P.A. 345 1990 KENT COUNTY

PEER APPROVED 12/1/94  
CHAIRMAN *Harry Shuber*

The position of this corner was previously approved by the Kent County Remonumentation Peer Group, monumented by William R. Byl on 5/20/85 and was recorded per LCRC #4259

B. Description of corner evidence found and/or method applied in restoring or reestablishing corner:

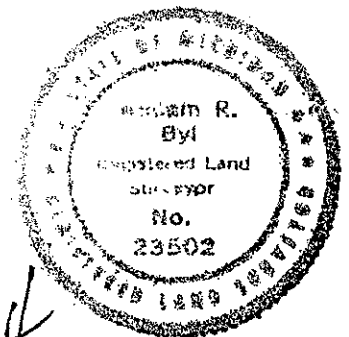
G-3 Found standard Kent Co. Mon. (Harrison) per witnesses from above LCRC as set by William R. Byl in place of the PK Nail he found. Said PK Nail checks with Williams & Works, Kent Co. Wit. and LCRC #48.

- |                      |               |                              |               |
|----------------------|---------------|------------------------------|---------------|
| <u>LCRC #4259</u>    |               | <u>LCRC #6531</u>            |               |
| NE cor. brk. planter | S35°W 64.69'  | NE cor. brick veneer planter | S35°W 64.69'  |
| NE cor. brk. bldg.   | S40°E 117.16' | NE cor. brick veneer bldg.   | S40°E 117.16' |
| Nail & tag P. Pole   | N60°W 59.50'  | Nail & tag S. side P. Pole   | N60°W 59.50'  |
| Face of hydrant      | N35°W 58.69'  | NW cor. brick bldg.          | S55°W 163.08' |
| SW cor. conc. curb   | N45°E 44.85'  | C/L NW bolt of E. sign base  | N40°E 64.37'  |
|                      |               | SE cor. brick bldg.          | N45°W 142.75' |
|                      |               | S & E backs of walks         | S45°E 69.49'  |

The selected location is accepted by me and is generally accepted by professional surveyors as the best available evidence of the position of the original corner.

C. Description of monument for corner and accessories established to perpetuate locating the position of the corner:

- |                                      |               |
|--------------------------------------|---------------|
| G-3 Standard Kent County Monument    |               |
| NE cor. brick veneer planter         | S35°W 64.77'  |
| NE cor. brick veneer bldg.           | S40°E 117.25' |
| Nail & KC Remon. tag S. side P. Pole | N60°W 59.56'  |
| NW cor. brick bldg.                  | S55°W 163.11' |
| C/L NW bolt of E. sign base          | N40°E 64.31'  |
| SE cor. brick bldg.                  | N45°W 142.75' |
| S & E backs of walks                 | S45°E 69.47'  |



Signed by *W. R. Byl*  
Surveyor's Michigan License No. 23502

Date 112794