

SURVEY & REMONUMENTATION

KENT COUNTY REMONUMENTATION

APR 27 1995

LAND CORNER RECORDATION CERTIFICATE
Filing Requirement of Act 74, Mich. P.A. 1970

COMMISSION

STATE OF MICHIGAN
COUNTY OF KENT
RECEIVED FOR RECORD
94 DEC -5 AM 8:57

W. J. Bond
REG. OF DEEDS

For corners in
KENT COUNTY

(County)

Located In:

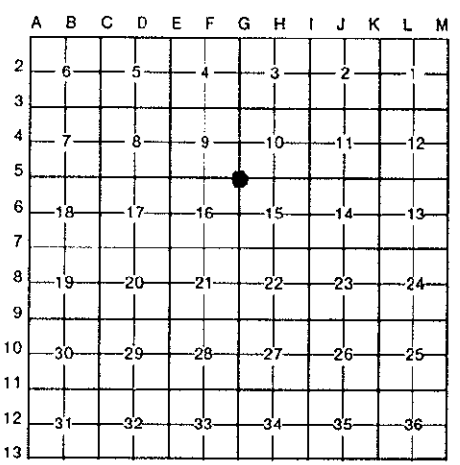
Corner Code #

1. Public Land Survey	T <u>6N</u> R <u>11W</u>	<u>G-5</u>
	T _____ R _____	_____
	T _____ R _____	_____
	T _____ R _____	_____
2. Property Controlling in Section	S _____ T _____ R _____	_____
	S _____ T _____ R _____	_____
3. Miscellaneous Property in Sec.	S _____ T _____ R _____	_____
	S _____ T _____ R _____	_____

7656

Register of Deeds Stamp & File Number

4. Lot No. _____, Recorded Plat _____
5. Private Claims _____



I, William R. Byl, in a field survey on Sept. 12, 19 94,

do hereby certify that under requirements of P.A. 74, Michigan P.A. of 1970, the corner points mentioned in lines 1 and 2 above were in conformance with regulations and rules therefore as required in the current manual of survey instructions of the United States Department of the Interior, Bureau of Land Management or by a decree of a Court of Law and/or that the corner points mentioned in lines 3, 4 and 5 above were in conformance with the regulations of the Michigan Board of Land Surveyors or by a Decree of a Court of Law; established, re-established, monumented, re-monumented, recovered, found as expressed below:

NOTE: Not more than 4 corners, all in the same town and range, may be recorded on this certificate.

A. Description of original monument and accessories and/or subsequent restoration:

G-5	1831	GLO	Mullett	Set Post
	1944	Kent Co. Wit.		1" Iron in mon. box
	1972	LCRC #343	Spicer	Iron in mon. box
	1981	LCRC #2474	Hackbardt	Set Kent County Monument in mon. box
	1992	LCRC #6533	Bueche	Kent County Monument in mon. box

P.A. 345 1990 KENT COUNTY
PEER APPROVED 12/1/94
CHAIRMAN Harry Huber

The position of this corner was previously approved by the Kent County Remonumentation Peer Group, monumented by Glen S. Hackbardt on 9/22/81 and was recorded per LCRC #2474

B. Description of corner evidence found and/or method applied in restoring or reestablishing corner:

G-5 Found standard Kent Co. Mon. (Harrison) per witnesses from above LCRC as set by Glen S. Hackbardt in place of the Boat Spike he found inside a mon. box. Said Boat Spike in mon. box checks with Kent Co. Wit. and LCRC #343.

<u>LCRC #2474</u>	NW cor. conc. lt. base	S45°E	84.08'	same witnesses as LCRC #2474
	NE bolt conc. lt. base	S20°W	88.05'	
	SE cor. 3.7' x 13' conc. sign base	N40°E	77.67'	
	E. bolt conc. lt. base	N50°W	69.77'	

The selected location is accepted by me and is generally accepted by professional surveyors as the best available evidence of the position of the original corner.

C. Description of monument for corner and accessories established to perpetuate locating the position of the corner:

G-5	Standard Kent County Monument in mon. box		
	NW cor. conc. lt. base	S45°E	84.04'
	NE bolt conc. lt. base	S20°W	88.08'
	SE cor. 3.7' x 13' conc. sign base	N40°E	77.60'
	E. bolt conc. lt. base	N50°W	69.77'
	C/L bit. rd. E-W is South 11' m/l; C/L bit. rd. N-S is East 3' m/l		



Signed by W. R. Byl
Surveyor's Michigan License No. 23502

Date 11/27/94