

SURVEY & REMONUMENTATION

APR 27 1995

KENT COUNTY REMONUMENTATION

COMMISSION

LAND CORNER RECORDATION CERTIFICATE

Filing Requirement of Act 74, Mich. P.A. 1970

STATE OF MICHIGAN
COUNTY OF KENT
RECEIVED FOR RECORD

91 DEC -5 AM 8:57

For corners in
KENT COUNTY
(County)

Located In: Corner Code #

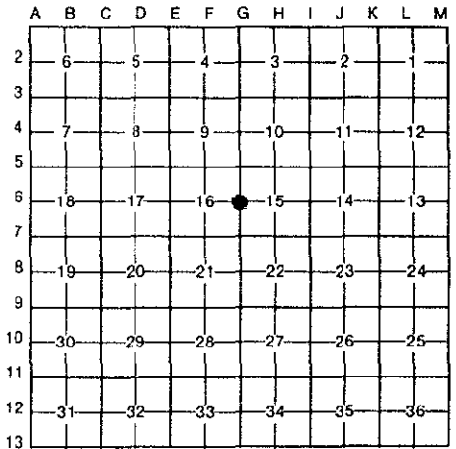
1. Public Land Survey	T	<u>6N</u>	R	<u>11W</u>	<u>G-6</u>
	T	_____	R	_____	_____
	T	_____	R	_____	_____
	T	_____	R	_____	_____
2. Property Controlling in Section	S	_____	T	_____	R
	S	_____	T	_____	R
3. Miscellaneous Property in Sec.	S	_____	T	_____	R
	S	_____	T	_____	R

Lucy Bond
REG. OF DEEDS

7657

Register of Deeds Stamp & File Number

4. Lot No. _____, Recorded Plat _____
5. Private Claims _____



I, William R. Byl, in a field survey on Oct. 6, 19 94, do hereby certify that under requirements of P.A. 74, Michigan P.A. of 1970, the corner points mentioned in lines 1 and 2 above were in conformance with regulations and rules therefore as required in the current manual of survey instructions of the United States Department of the Interior, Bureau of Land Management or by a decree of a Court of Law and/or that the corner points mentioned in lines 3, 4 and 5 above were in conformance with the rules of the Michigan Board of Land Surveyors or by a Decree of a Court of Law; established, re-established, monumented, re-monumented, recovered, found as expressed below:

NOTE: Not more than 4 corners, all in the same town and range, may be recorded on this certificate.

A. Description of original monument and accessories and/or subsequent restoration:

G-6	1831	GLO	Mullett	Set Post	P.A. 345 1990 KENT COUNTY
		Kent Co. Wit.		Boat Spike in Iron	PEER APPROVED <u>12/11/94</u>
	1972	LCRC #343	Spicer	PK Nail	CHAIRMAN <i>Harry Shaker</i>
	1981	LCRC #2478	Hackbardt	Set Re-rod and M & B cap	
	1992	LCRC #6534	Bueche	Found PK Nail after const.	

The position of this corner was previously approved by the Kent County Remonumentation Peer Group, monumented (no KC Mon. set) by Glen S. Hackbardt on 9/22/81 and was recorded per LCRC #2478.

B. Description of corner evidence found and/or method applied in restoring or reestablishing corner:

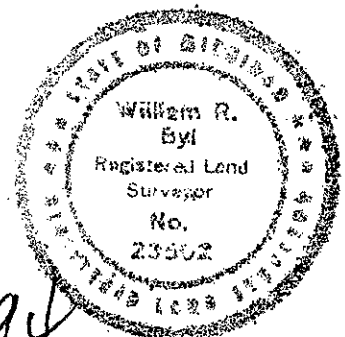
G-6 Found PK Nail per witnesses from above LCRC as found by John C. Bueche at the same location as Re-rod with M & B cap as set in 1981 by Glen S. Hackbardt in place of the PK Nail he found. Said PK Nail checks with Kent Co. Wit. and LCRC #343.

<u>LCRC #2478</u>		<u>LCRC #6534</u>			
C/L manhole	N10°W	1.10'	C/L manhole	N10°W	1.10'
C/L hydrant	N30°W	61.80'	SW cor. bldg. fnd.	N50°E	117.50'
C/L manhole	S40°E	17.78'	SE cor. brick bldg.	N60°W	182.34'
C/L manhole	S75°E	35.93'	Nail & KC Remon. tag E. side P. Pole	S50°W	56.09'
			Nail & KC Remon. tag S. side P. Pole	S70°E	85.00'
			C/L hydrant	N30°W	65.80'
			S & E line of walks	S50°E	61.78'

The selected location is accepted by me and is generally accepted by professional surveyors as the best available evidence of the position of the original corner.

C. Description of monument for corner and accessories established to perpetuate locating the position of the corner:

G-6 PK Nail	
C/L manhole	N10°W 1.14'
SW cor. bldg. fnd.	N50°E 117.48'
SE cor. brick bldg.	N60°W 182.34'
Nail & KC Remon. tag E. side P. Pole	S50°W 56.07'
Nail & KC Remon. tag S. side P. Pole	S70°E 85.00'
C/L top hydrant	N30°W 65.31'
S & E line of walks	S50°E 61.64'



Signed by *W. R. Byl*
Surveyor's Michigan License No. 23502

Date 11/27/94