

SURVEY & REMONUMENTATION

APR 27 1995

KENT COUNTY REMONUMENTATION

STATE OF MICHIGAN
COUNTY OF KENT
RECEIVED FOR RECORD

COMMISSION

LAND CORNER RECORDATION CERTIFICATE
Filing Requirement of Act 74, Mich. P.A. 1970

94 DEC -5 AM 8:57

For corners in
KENT COUNTY

(County)	Located In:	Corner Code #
1. Public Land Survey	T <u>6N</u> R <u>11W</u>	<u>G-9</u>
	T _____ R _____	_____
	T _____ R _____	_____
	T _____ R _____	_____
2. Property Controlling in Section	S _____ T _____ R _____	_____
	S _____ T _____ R _____	_____
3. Miscellaneous Property in Sec.	S _____ T _____ R _____	_____
	S _____ T _____ R _____	_____
4. Lot No. _____, Recorded Plat _____		
5. Private Claims _____		

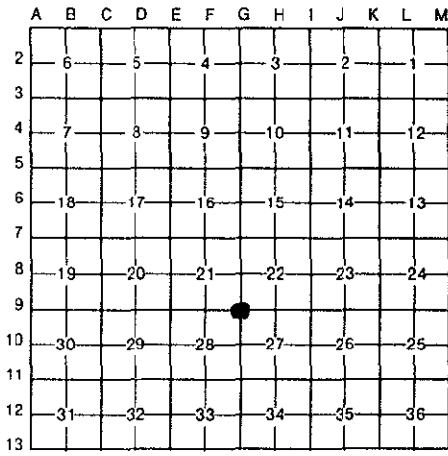
W. R. Byl
REG. OF DEEDS

7660

Register of Deeds Stamp & File Number

I, William R. Byl, in a field survey on Sept. 13, 19 94

do hereby certify that under requirements of P.A. 74, Michigan P.A. of 1970, the corner points mentioned in lines 1 and 2 above were in conformance with regulations and rules therefore as required in the current manual of survey instructions of the United States Department of the Interior, Bureau of Land Management or by a decree of a Court of Law and/or that the corner points mentioned in lines 3, 4 and 5 above were in conformance with the rules of the Michigan Board of Land Surveyors or by a Decree of a Court of Law; established, re-established, monumented, re-monumented, recovered, found as expressed below:



NOTE: Not more than 4 corners, all in the same town and range, may be recorded on this certificate.

A. Description of original monument and accessories and/or subsequent restoration:

G-9	1831	GLO	Mullett	Set Post
		Kent Co. Wit.		Mon. box
	1972	LCRC #131	Chambers	Mon. Box
	1981	LCRC #2480	Hackbardt	Set Kent County Monument in mon. box
	1982	LCRC #3188	Wickham	Reset KC Mon. in mon. box after const.
	1992	LCRC #6537	Bueche	Kent County Monument in mon. box

P.A. 345 1990 KENT COUNTY
PEER APPROVED 12/1/94
CHAIRMAN *Frank Stuber*

The position of this corner was previously approved by the Kent County Remonumentation Peer Group, monumented by Glen S. Hackbardt on 9/22/81 and was recorded per LCRC #2480

B. Description of corner evidence found and/or method applied in restoring or reestablishing corner:

G-9 Found standard Kent Co. Mon. (Harrison) per witnesses from above LCRC as set by Burt Wickham Jr. at the same location as set in 1981 by Glen S. Hackbardt in place of the 1/2" Iron he found inside a mon. box. Said Iron in mon. box checks with Kent Co. Wit. and LCRC #131.

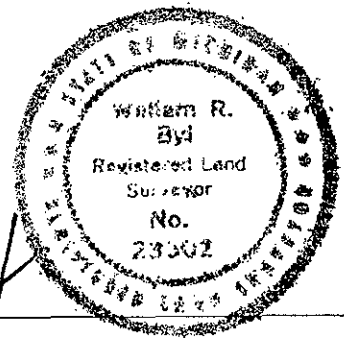
<u>LCRC #2480</u>		<u>LCRC #6537</u>	
C/L hydrant	N50°W 52.40'	SW cor. conc. base for signal box	N45°E 81.20'
C/L hydrant	S40°W 61.20'	Nail & KC tag E. curb of island	North 57.73'
C/L manhole	S30°E 33.30'	S & E backs of walks	S45°E 75.69'
NW cor. CB header	N55°E 48.60'	"X" cut E. side conc. base fo light	S35°W 99.78'
C/L manhole	East 5.98'	Existing "X" cut in SW side conc.	S40°W 62.86'
		"X" cut N. side conc. base for signal	N50°W 90.16'

The selected location is accepted by me and is generally accepted by professional surveyors as the best available evidence of the position of the original corner.

C. Description of monument for corner and accessories established to perpetuate locating the position of the corner:

G-9 Standard Kent County Monument in mon. box

SW cor. conc. base for signal box	N45°E	81.12'
Nail & KC Remon. tag E. curb of island	N00°E	57.65'
S & E backs of walks	S45°E	75.65'
"X" cut E. side conc. base fo light	S35°W	99.75'
"X" cut in SW side conc.	S40°W	62.83'
"X" cut N. side conc. base for signal	N50°W	90.12'



Signed by *W. R. Byl* Date 11/27/94
Surveyor's Michigan License No. 23502