

**SURVEY & REMONUMENTATION**

APR 27 1995

KENT COUNTY REMONUMENTATION

COMMISSION

LAND CORNER RECORDATION CERTIFICATE  
Filing Requirement of Act 74, Mich. P.A. 1970

STATE OF MICHIGAN  
COUNTY OF KENT  
RECEIVED FOR RECORD  
94 DEC -5 AM 8:58

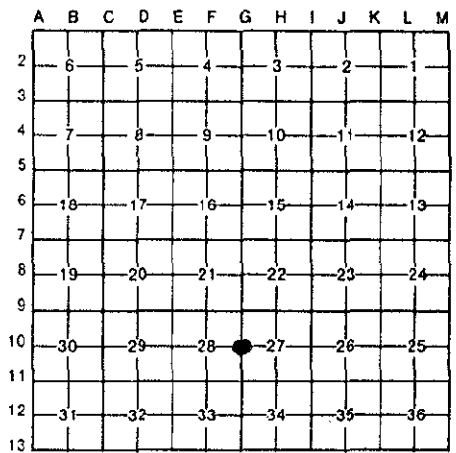
For corners in  
KENT COUNTY

(County)	Located In:	Corner Code #/
1. Public Land Survey	T 6N R 11W	G-10
	T _____ R _____	_____
	T _____ R _____	_____
	T _____ R _____	_____
2. Property Controlling in Section	S _____ T _____ R _____	_____
	S _____ T _____ R _____	_____
3. Miscellaneous Property in Sec.	S _____ T _____ R _____	_____
	S _____ T _____ R _____	_____
4. Lot No. _____, Recorded Plat _____		
5. Private Claims _____		

*Lucy Bond*  
REG. OF DEEDS

7661

Register of Deeds Stamp & File Number



I, William R. Byl, in a field survey on Nov. 18, 19 94, do hereby certify that under requirements of P.A. 74, Michigan P.A. of 1970, the corner points mentioned in lines 1 and 2 above were in conformance with regulations and rules theretofore as required in the current manual of survey instructions of the United States Department of the Interior, Bureau of Land Management or by a decree of a Court of Law and/or that the corner points mentioned in lines 3, 4 and 5 above were in conformance with the rules of the Michigan Board of Land Surveyors or by a Decree of a Court of Law; established, re-established, monumented, re-monumented, recovered, found as expressed below:

**NOTE: Not more than 4 corners, all in the same town and range, may be recorded on this certificate.**

A. Description of original monument and accessories and/or subsequent restoration:

G-10	1831	GLO	Mullett	Set Post
	1972	LCRC #110	Bonnema	3/4" Iron at fence cor.
	1982	LCRC #2995	Byl	Set Kent County Monument
	1992	LCRC #6538	Bueche	Kent County Monument

The position of this corner was previously approved by the Kent County Remonumentation Peer Group, monumented by William R. Byl on 5/24/82. and was recorded per LCRC #2995

P.A. 345 1990 KENT COUNTY  
PEER APPROVED 12/1/94  
COMMISSIONER *Henry Huber*

B. Description of corner evidence found and/or method applied in restoring or reestablishing corner:  
G-10 Found standard Kent Co. Mon. (Harrison) in ditch per witnesses from above LCRC as set by William R. Byl in place of the "T" post he found over a 3/4" Iron Pipe. Said "T" post and 3/4" Iron Pipe checks with LCRC #110.

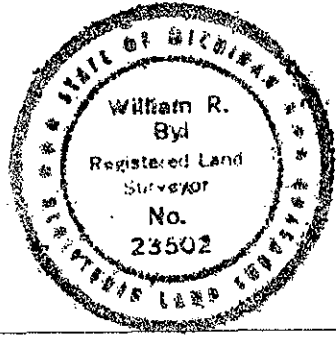
LCRC #2995		LCRC #6538	
Nail & tag 8" Oak	S80°E 32.55'	Nail & Remon. tag W. side 12" Ash	S15°W 17.93'
Nail & tag 6" Oak	S60°E 8.73'	Nail & Remon. tag S. side 12" Elm	N90°E 27.90'
Nail & tag 12" Oak	S60°W 60.65'	Nail & Remon. tag S. side 12" Oak	S60°E 8.85'
Nail & tag 16" Oak	N90°W 52.13'	Nail & Remon. tag NW side 16" Oak	S50°W 65.44'
Nail & tag 12" Beech	S25°W 58.97'	Nail & Remon. tag S. side 14" Oak	S60°W 60.63'

On old fence line E-W; End bit. is 40' N & W

The selected location is accepted by me and is generally accepted by professional surveyors as the best available evidence of the position of the original corner.

C. Description of monument for corner and accessories established to perpetuate locating the position of the corner:

G-10 Standard Kent County Monument in ditch			
Nail & KC Remon. tag W. side 12" Ash	S15°W	17.93'	
Nail & KC Remon. tag S. side 12" Elm	N90°E	27.90'	
New Nail & KC Remon. tag S. side 12" Oak	S40°E	8.70'	
Nail & KC Remon. tag NW side 16" Oak	S50°W	65.44'	
Set Nail & KC Remon. tag W. side 10" Maple	S20°E	33.31'	
On old fence line E-W; End bit. is 40' N & W			



Signed by *W. R. Byl*  
Surveyor's Michigan License No. 23502

Date 112794